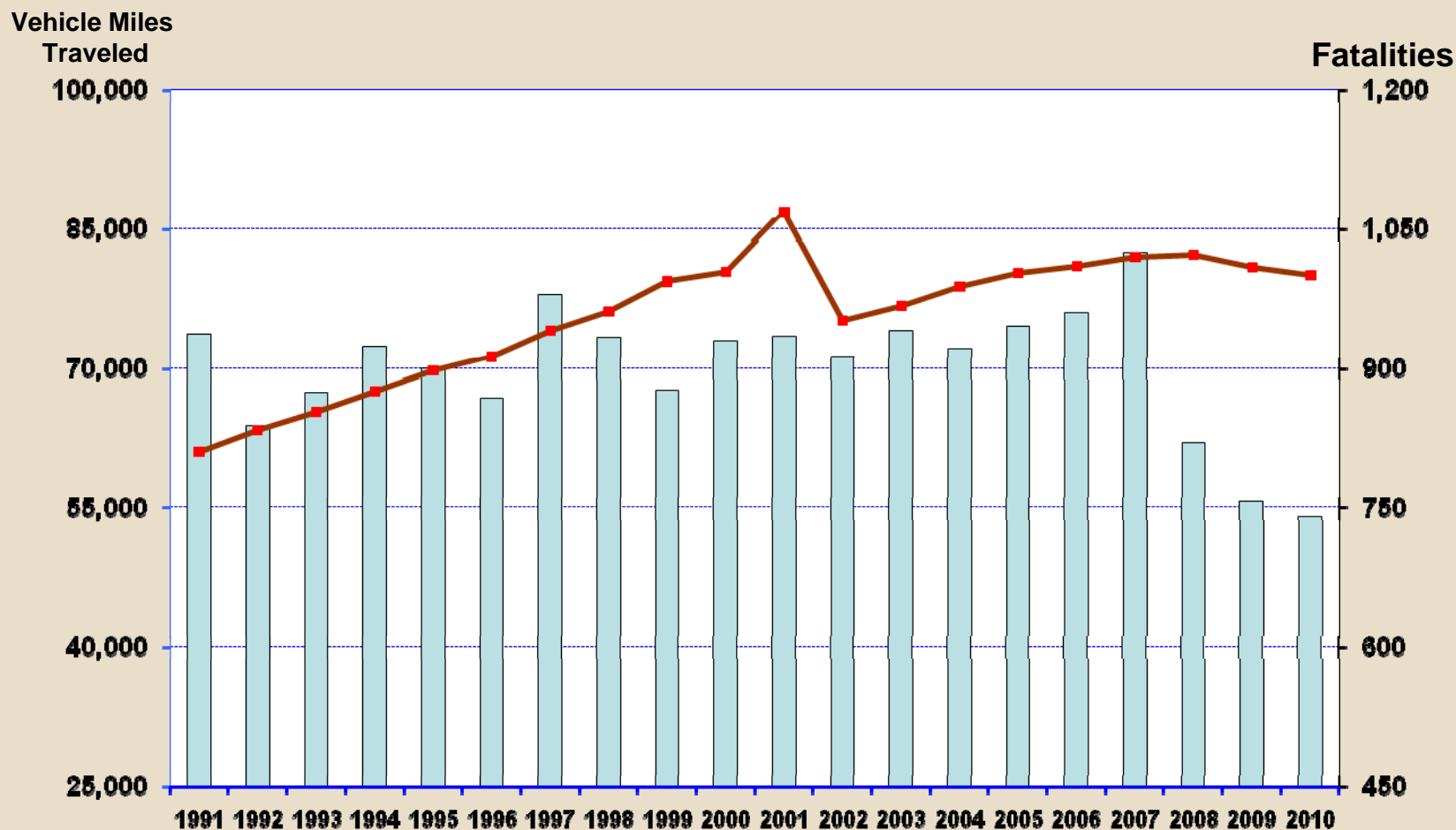


# VEHICLE MILES TRAVELED AND FATALITIES IN VIRGINIA CALENDAR YEARS 1991 - 2010



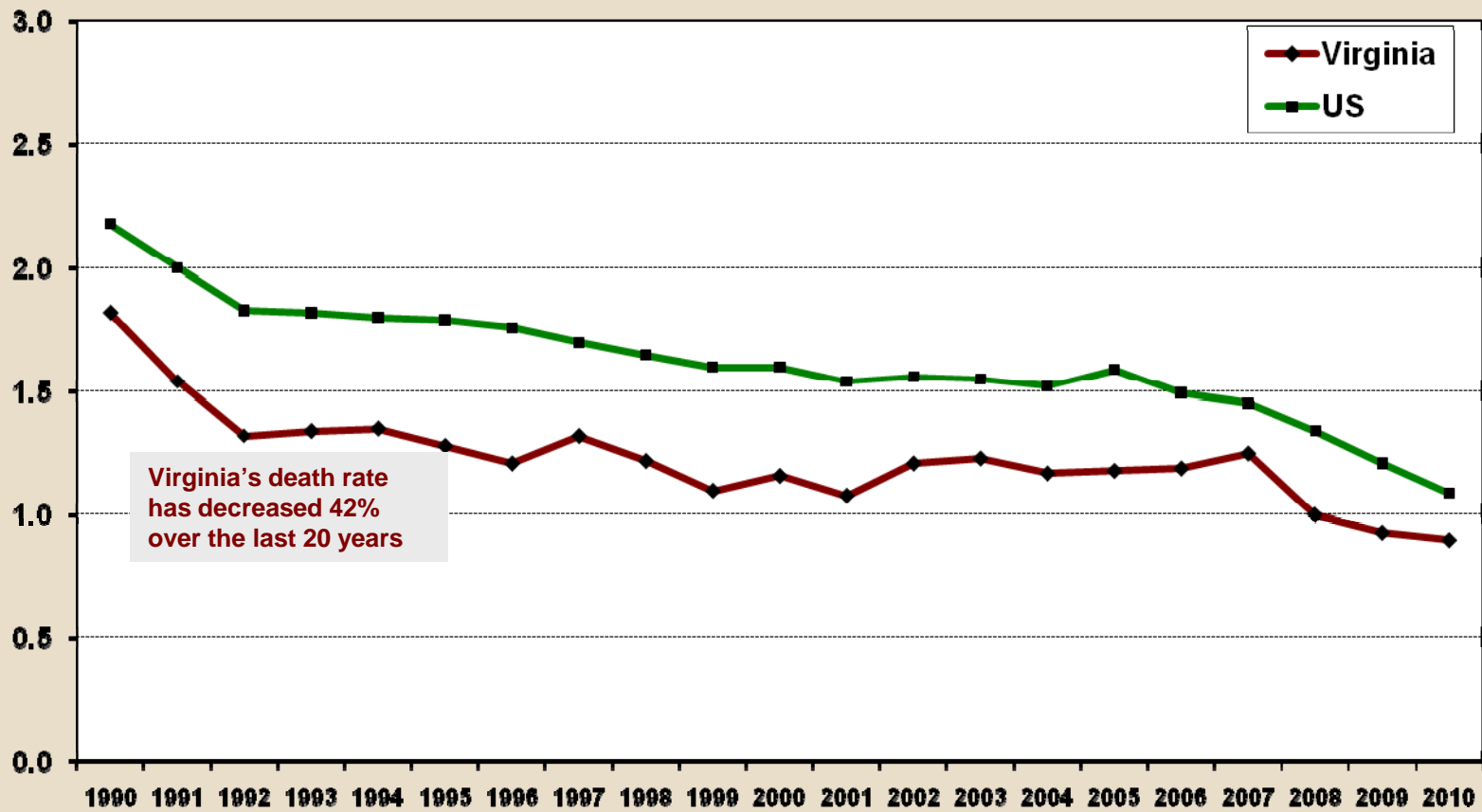
(VMT) are in millions.

Starting in 2002 VMT is based on vehicle count instead of gasoline consumption using the Virginia Department of Transportation's Traffic Monitoring System.

Source: Virginia Highway Safety Office



# DEATH RATE PER 100 MILLION MILES OF TRAVEL CALENDAR YEARS 1990 - 2010



Source: Virginia Highway Safety Office