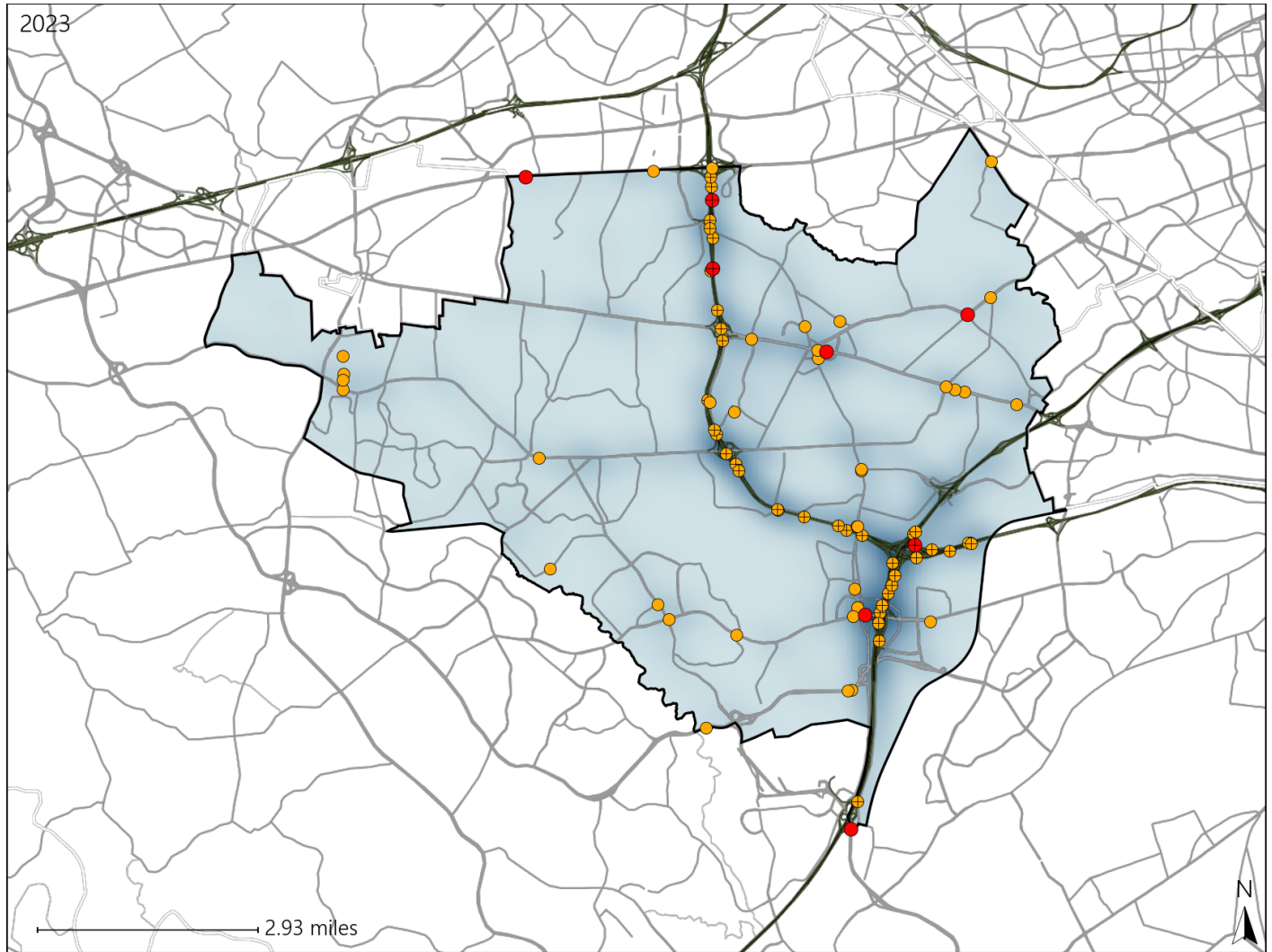


Virginia Senate District 35 Crash Statistics

Report Generated May, 2024

	Count	Highest Time Period(s)	Highest Day(s)	Highest Month(s)
Fatal Crashes	8	Midnight - 2:59am	Friday	September
Resulting Fatalities	8	(62%)	(38%)	(25%)
Serious Injury Crashes	74	Noon - 2:59pm	Saturday	June
		(20%)	(22%)	(14%)



Senate District 35 Crashes

Interstate Crashes

- Fatal
- Serious Injury

Non-interstate Crashes

- Fatal
- Serious Injury

The blue gradient represents the density of all crashes.

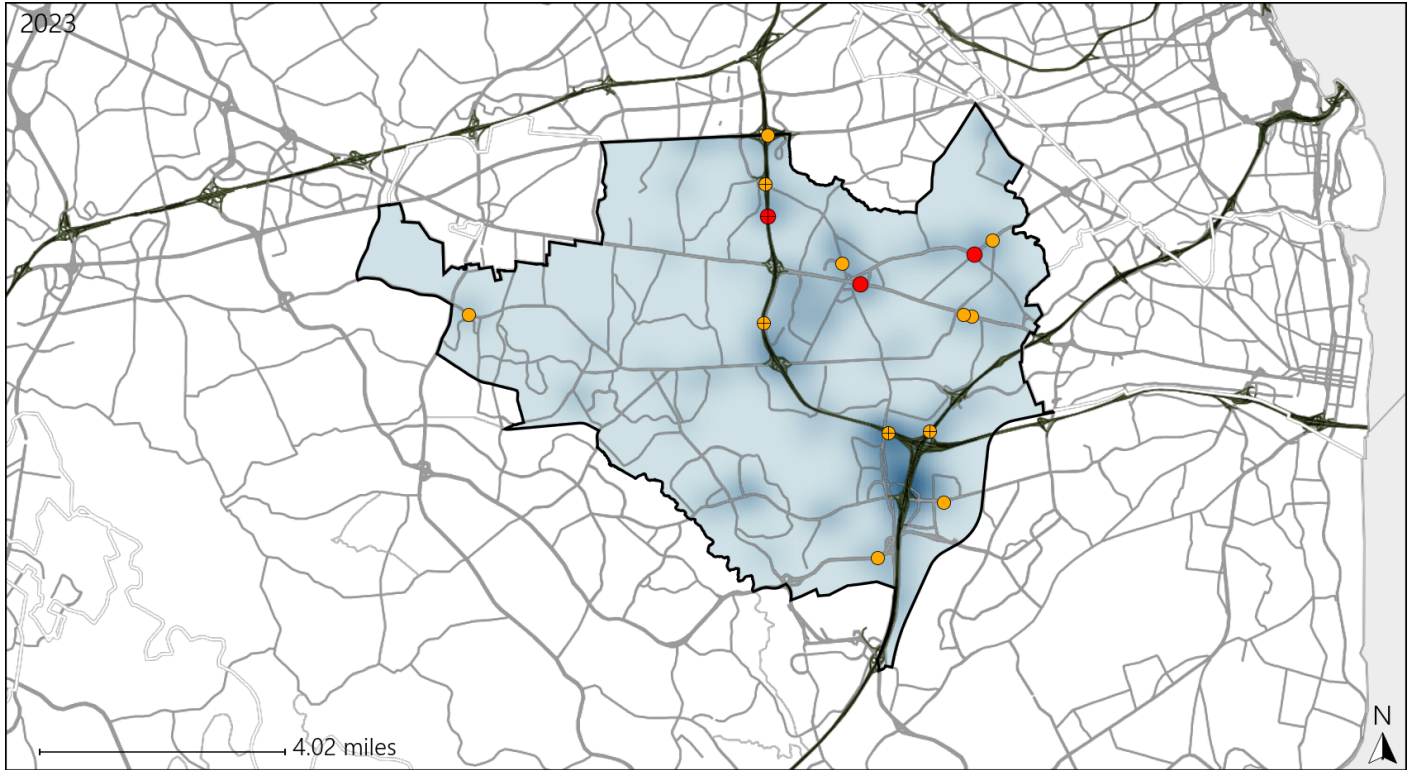


Available Crash Data - Calendar Year (CY)	CY 2020	CY 2021	CY 2022	CY 2023
Total Crashes	1967	2122	2438	2887
Fatal Crashes	10	10	13	8
Injury Crashes	522	623	652	829

Virginia Senate District 35 Alcohol Crash Statistics

Report Generated May, 2024

	Count	Highest Time Period(s)	Highest Day(s)	Highest Month(s)
Fatal Crashes	3	Midnight - 2:59am	Saturday	January • July
Resulting Fatalities	3	(100%)	(67%)	(66%)
Serious Injury Crashes	12	9:00pm - 11:59pm	Saturday	June • October
		(33%)	(50%)	(50%)




Senate District 35 Alcohol-Related Crashes


Interstate Crashes

Non-interstate Crashes

 Fatal

 Fatal

 Serious Injury

 Serious Injury

The blue gradient represents the density of all alcohol-related crashes.

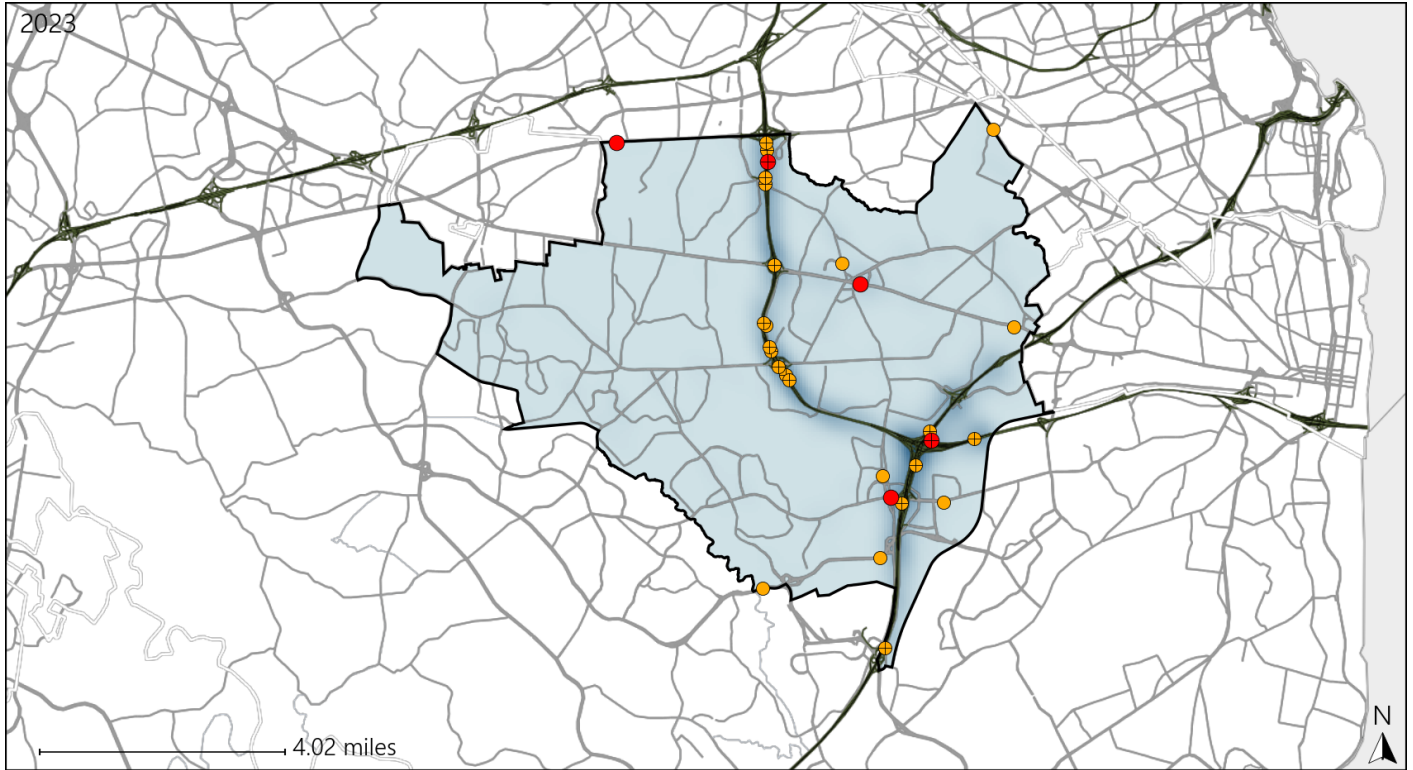


Available Crash Data - Calendar Year (CY)	CY 2020	CY 2021	CY 2022	CY 2023
Total Crashes	1967	2122	2438	2887
Fatal Crashes	10	10	13	8
Injury Crashes	522	623	652	829
Alcohol-Related Fatal Crashes	5	4	2	3
Percent of Alcohol-Related Fatal Crashes to Total Fatal Crashes	50%	40%	15%	38%
Alcohol-Related Injury Crashes	38	40	49	56
Percent of Alcohol-Related Injury Crashes to Total Injury Crashes	7%	6%	8%	7%

Virginia Senate District 35 Speed Crash Statistics

Report Generated May, 2024

	Count	Highest Time Period(s)	Highest Day(s)	Highest Month(s)
Fatal Crashes	5	Midnight - 2:59am	Friday • Sunday	August • January
Resulting Fatalities	5	(60%)	(80%)	(40%)
Serious Injury Crashes	24	Noon - 2:59pm	Saturday	August • June
		(25%)	(25%)	(34%)



Senate District 35 Speed-Related Crashes

Interstate Crashes Non-interstate Crashes
 ● Fatal ● Fatal
 ⊕ Serious Injury ⊕ Serious Injury

The blue gradient represents the density of all speed-related crashes.

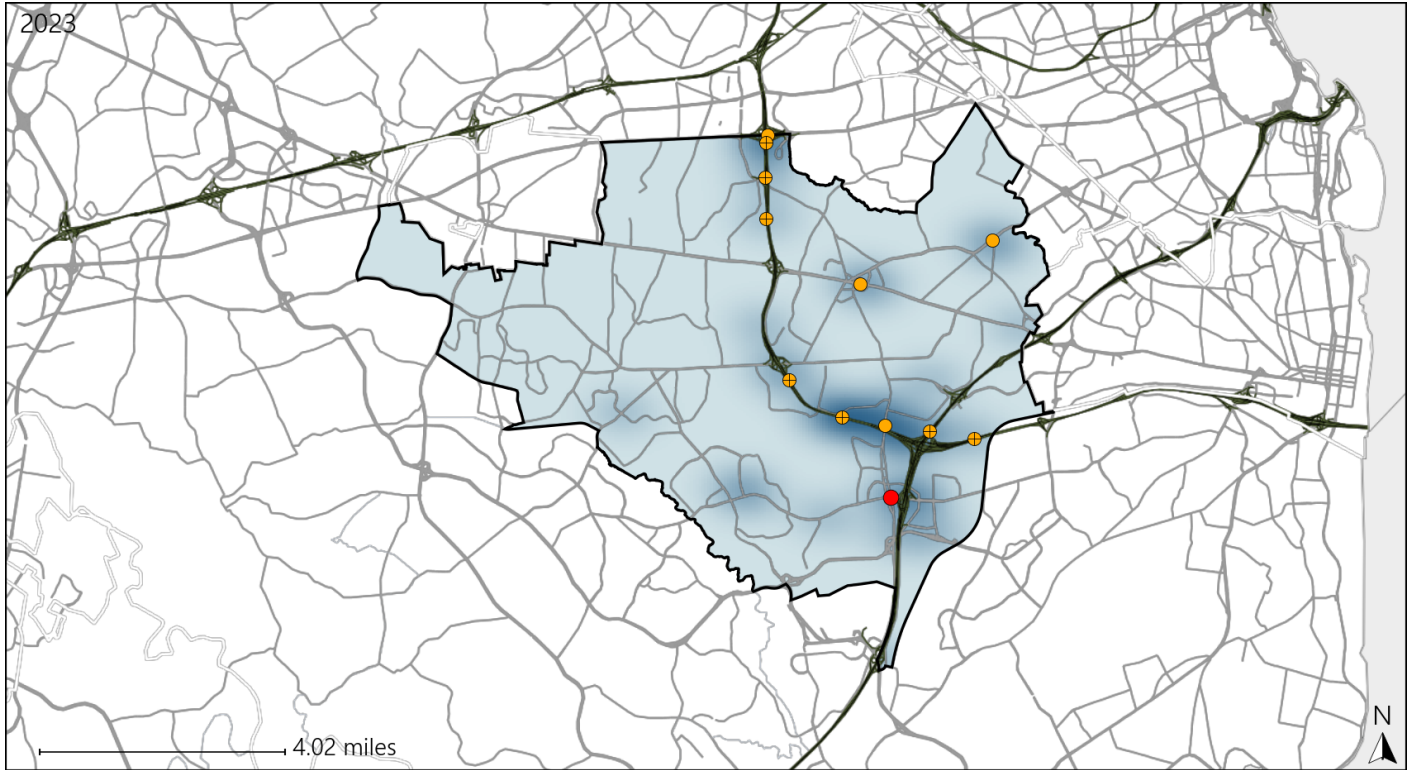


Available Crash Data - Calendar Year (CY)	CY 2020	CY 2021	CY 2022	CY 2023
Total Crashes	1967	2122	2438	2887
Fatal Crashes	10	10	13	8
Injury Crashes	522	623	652	829
Speed-Related Fatal Crashes	5	3	8	5
Percent of Speed-Related Fatal Crashes to Total Fatal Crashes	50%	30%	62%	63%
Speed-Related Injury Crashes	161	229	230	221
Percent of Speed-Related Injury Crashes to Total Injury Crashes	31%	37%	35%	27%

Virginia Senate District 35 Unrestrained Crash Statistics

Report Generated May, 2024

	Count	Highest Time Period(s)	Highest Day(s)	Highest Month(s)
Fatal Crashes	1	Midnight - 2:59am	Sunday	November
Unrestrained Fatalities	1	(100%)	(100%)	(100%)
Serious Injury Crashes	11	9:00am - 11:59am	Saturday • Sunday	April • July
		(27%)	(54%)	(36%)



Senate District 35 Unrestrained-Related Crashes

Interstate Crashes

- Fatal
- ⊕ Serious Injury

Non-interstate Crashes

- Fatal
- Serious Injury

The blue gradient represents the density of all unrestrained-related crashes.

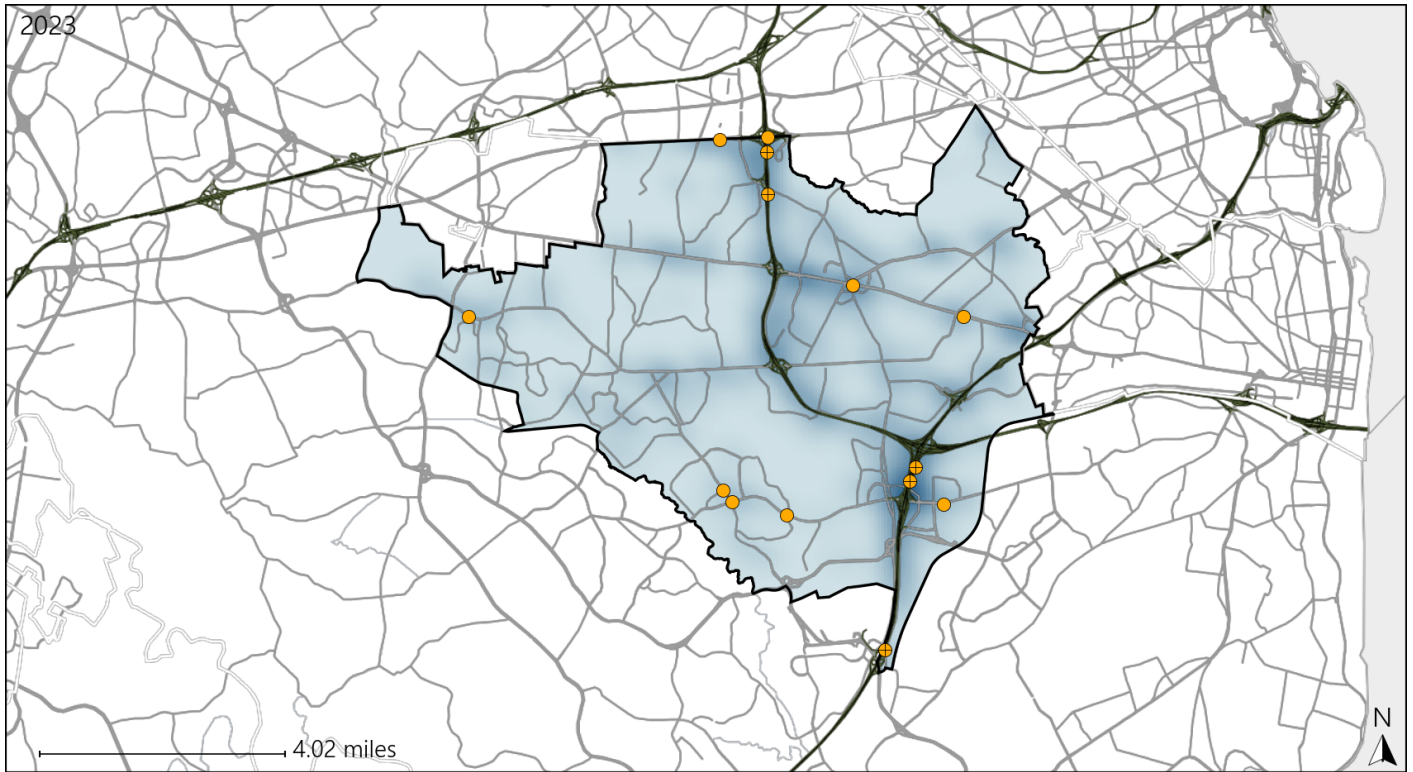


Available Crash Data - Calendar Year (CY)	CY 2020	CY 2021	CY 2022	CY 2023
Total Crashes	1967	2122	2438	2887
Fatalities	10	10	13	8
Injuries	753	972	999	1323
Unrestrained Fatalities	2	4	3	1
Percent of Unrestrained Fatalities to Total Fatalities	20%	40%	23%	13%
Unrestrained Injuries	31	26	35	34
Percent of Unrestrained Injuries to Total Injuries	4%	3%	4%	3%

Virginia Senate District 35 Distracted Driving Crash Statistics

Report Generated May, 2024

	Count	Highest Time Period(s)	Highest Day(s)	Highest Month(s)
Fatal Crashes	0	-	-	-
Resulting Fatalities	0	-	-	-
Serious Injury Crashes	14	Noon - 2:59pm (29%)	Thursday (29%)	October (29%)



Senate District 35 Distracted Driving-Related Crashes

- | | |
|--|--|
| Interstate Crashes | Non-interstate Crashes |
|  Fatal |  Fatal |
|  Serious Injury |  Serious Injury |

The blue gradient represents the density of all distracted driving-related crashes.



Available Crash Data - Calendar Year (CY)	CY 2020	CY 2021	CY 2022	CY 2023
Total Crashes	1967	2122	2438	2887
Fatal Crashes	10	10	13	8
Injury Crashes	522	623	652	829
Distracted Driving-Related Fatal Crashes	2	1	3	0
Percent of Distracted Driving-Related Fatal Crashes to Total Fatal Crashes	20%	10%	23%	0%
Distracted Driving-Related Injury Crashes	120	126	133	177
Percent of Distracted Driving-Related Injury Crashes to Total Injury Crashes	23%	20%	20%	21%