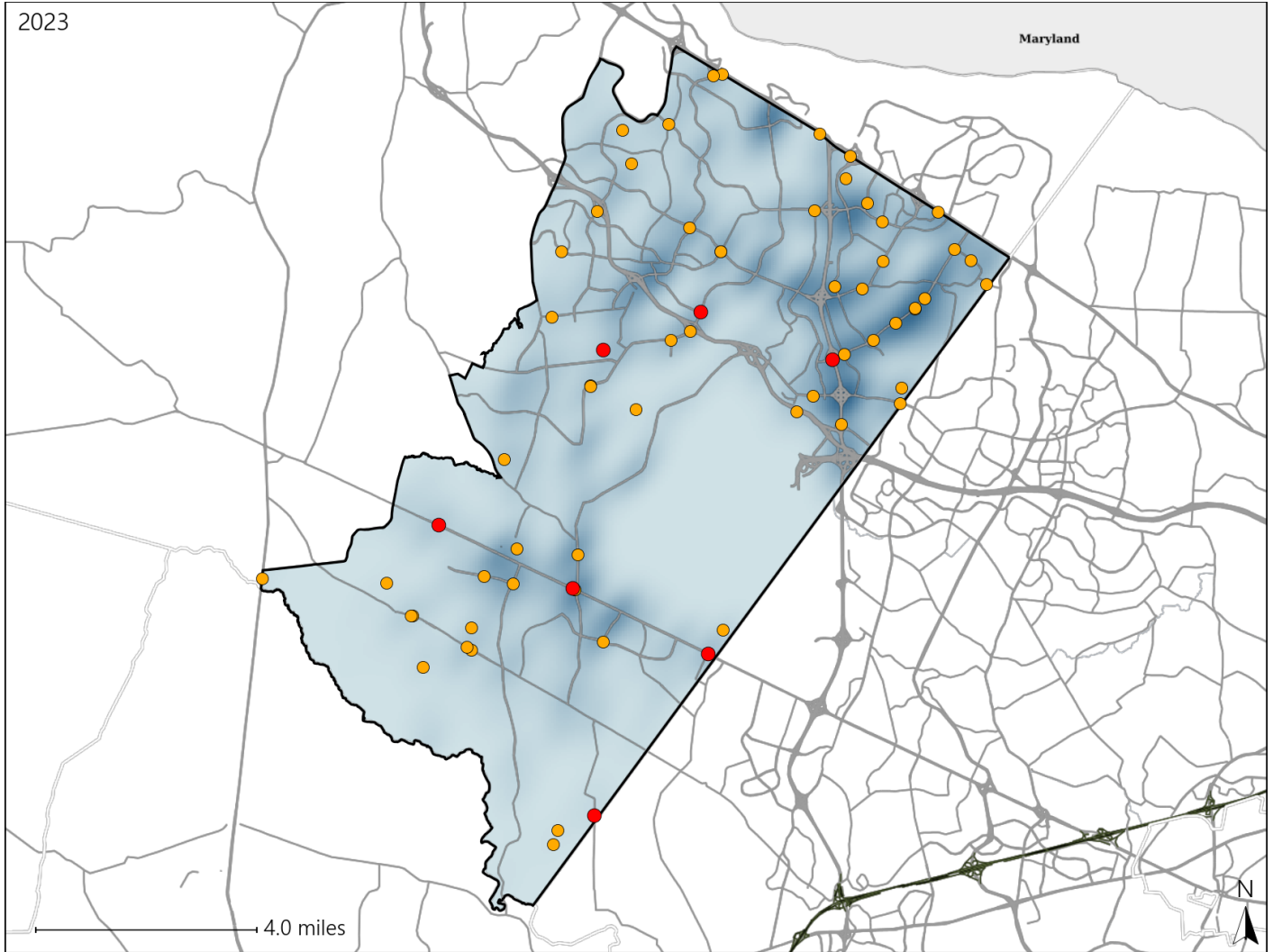


Virginia Senate District 32 Crash Statistics

Report Generated May, 2024

	Count	Highest Time Period(s)	Highest Day(s)	Highest Month(s)
Fatal Crashes	7	3:00pm - 5:59pm	Monday • Wednesday	October • September
Resulting Fatalities	9	(29%)	(58%)	(58%)
Serious Injury Crashes	58	3:00pm - 5:59pm	Thursday	October
		(28%)	(21%)	(14%)



Senate District 32 Crashes

Interstate Crashes

- Fatal
- Serious Injury

Non-interstate Crashes

- Fatal
- Serious Injury

The blue gradient represents the density of all crashes.

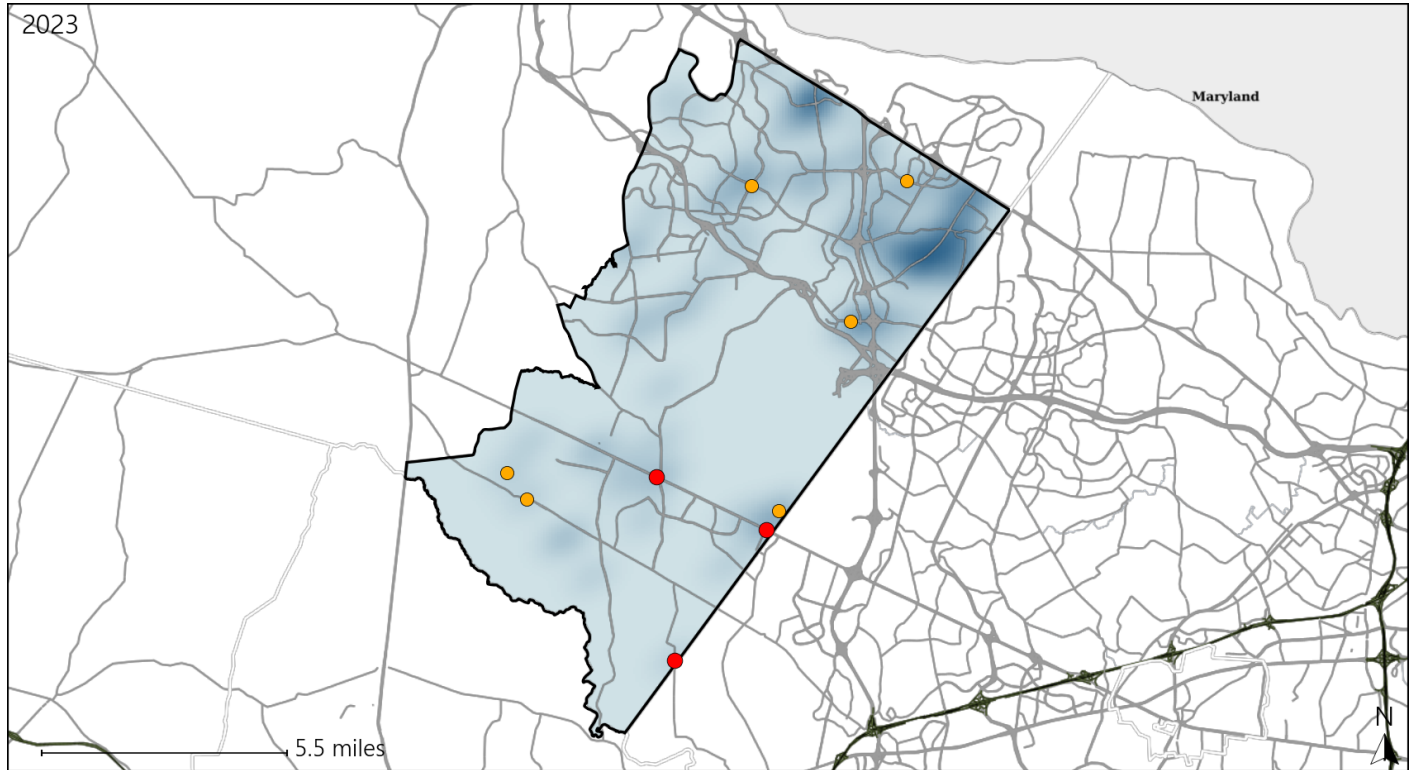


Available Crash Data - Calendar Year (CY)	CY 2020	CY 2021	CY 2022	CY 2023
Total Crashes	1610	2007	2439	2427
Fatal Crashes	4	4	7	7
Injury Crashes	381	500	565	581

Virginia Senate District 32 Alcohol Crash Statistics

Report Generated May, 2024

	Count	Highest Time Period(s)	Highest Day(s)	Highest Month(s)
Fatal Crashes	3	3:00am - 5:59am	Friday - Thursday	August - July
Resulting Fatalities	3	6:00am - 8:59am (66%)	(66%)	(66%)
Serious Injury Crashes	6	Midnight - 2:59am (33%)	Saturday (50%)	April (33%)



Senate District 32 Alcohol-Related Crashes

Interstate Crashes Non-interstate Crashes
 ● Fatal ● Fatal
 ● Serious Injury ● Serious Injury

The blue gradient represents the density of all alcohol-related crashes.



Available Crash Data - Calendar Year (CY)	CY 2020	CY 2021	CY 2022	CY 2023
Total Crashes	1610	2007	2439	2427
Fatal Crashes	4	4	7	7
Injury Crashes	381	500	565	581
Alcohol-Related Fatal Crashes	2	1	0	3
Percent of Alcohol-Related Fatal Crashes to Total Fatal Crashes	50%	25%	0%	43%
Alcohol-Related Injury Crashes	25	24	43	29
Percent of Alcohol-Related Injury Crashes to Total Injury Crashes	7%	5%	8%	5%

Virginia Senate District 32 Speed Crash Statistics

Report Generated May, 2024

	Count	Highest Time Period(s)	Highest Day(s)	Highest Month(s)
Fatal Crashes	5	3:00pm - 5:59pm	Monday	October
Resulting Fatalities	7	(40%)	(40%)	(40%)
Serious Injury Crashes	13	Midnight - 2:59am	Saturday • Tuesday	April • October
		(31%)	(46%)	(46%)



Senate District 32 Speed-Related Crashes

Interstate Crashes Non-interstate Crashes
 ● Fatal ● Fatal
 ● Serious Injury ● Serious Injury

The blue gradient represents the density of all speed-related crashes.



Available Crash Data - Calendar Year (CY)	CY 2020	CY 2021	CY 2022	CY 2023
Total Crashes	1610	2007	2439	2427
Fatal Crashes	4	4	7	7
Injury Crashes	381	500	565	581
Speed-Related Fatal Crashes	0	2	2	5
Percent of Speed-Related Fatal Crashes to Total Fatal Crashes	0%	50%	29%	71%
Speed-Related Injury Crashes	56	81	89	75
Percent of Speed-Related Injury Crashes to Total Injury Crashes	15%	16%	16%	13%

Virginia Senate District 32 Unrestrained Crash Statistics

Report Generated May, 2024

	Count	Highest Time Period(s)	Highest Day(s)	Highest Month(s)
Fatal Crashes	1	9:00pm - 11:59pm	Wednesday	October
Unrestrained Fatalities	1	(100%)	(100%)	(100%)
Serious Injury Crashes	9	Midnight - 2:59am	Friday	April - September
		(33%)	(33%)	(66%)



Senate District 32 Unrestrained-Related Crashes

Interstate Crashes

Non-interstate Crashes

- Fatal
- Serious Injury

- Fatal
- Serious Injury

The blue gradient represents the density of all unrestrained-related crashes.

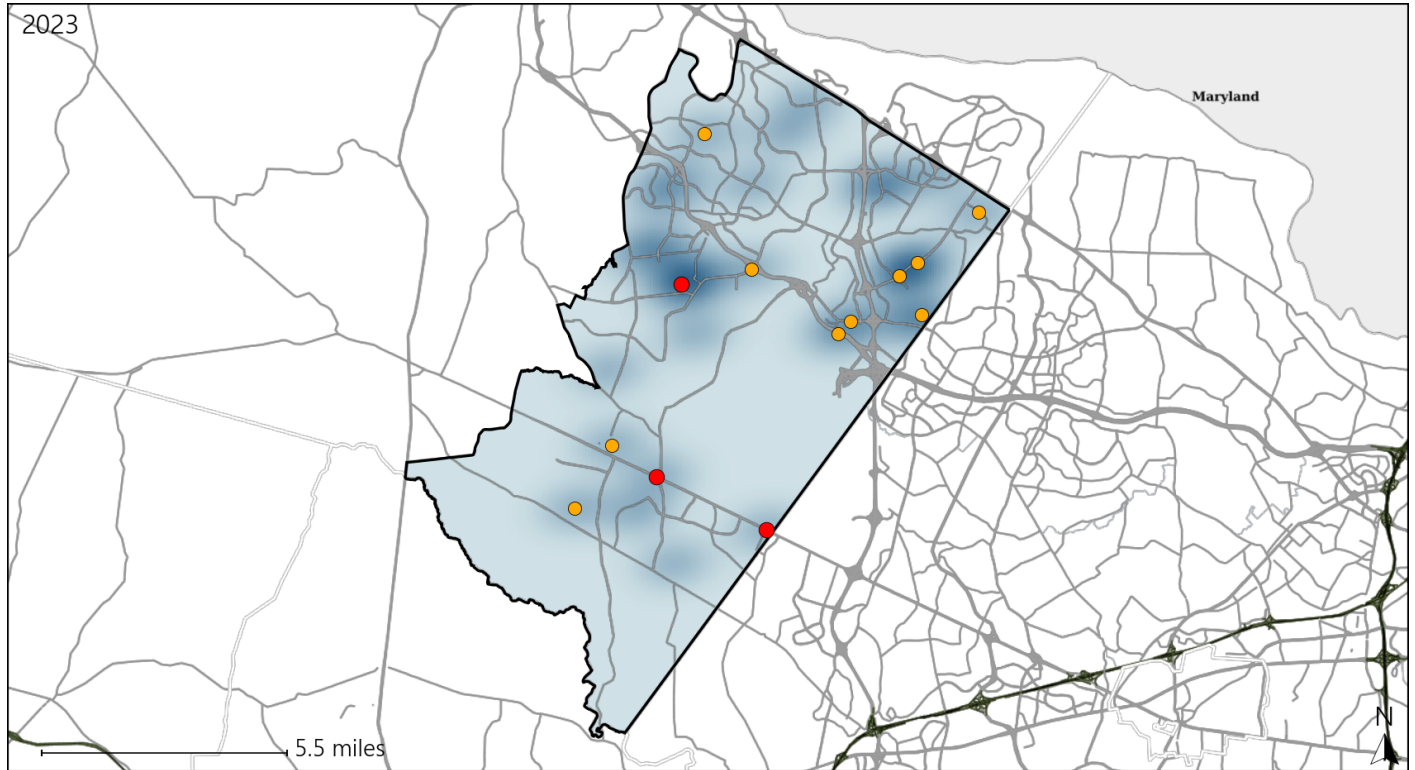


Available Crash Data - Calendar Year (CY)	CY 2020	CY 2021	CY 2022	CY 2023
Total Crashes	1610	2007	2439	2427
Fatalities	4	4	7	9
Injuries	607	771	983	976
Unrestrained Fatalities	3	0	2	1
Percent of Unrestrained Fatalities to Total Fatalities	75%	0%	29%	11%
Unrestrained Injuries	25	27	47	39
Percent of Unrestrained Injuries to Total Injuries	4%	4%	5%	4%

Virginia Senate District 32 Pedestrian Crash Statistics

Report Generated May, 2024

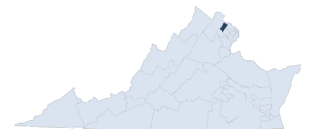
	Count	Highest Time Period(s)	Highest Day(s)	Highest Month(s)
Fatal Crashes	3	3:00am - 5:59am	Friday • Monday	July • October
Pedestrian Fatalities	3	3:00pm - 5:59pm (66%)	(66%)	(66%)
Serious Injury Crashes	10	6:00pm - 8:59pm (40%)	Thursday (30%)	June (30%)



Senate District 32 Pedestrian-Related Crashes

- | | |
|--|--|
| Interstate Crashes | Non-interstate Crashes |
| ● Fatal | ● Fatal |
| ● Serious Injury | ● Serious Injury |

The blue gradient represents the density of all pedestrian-related crashes.

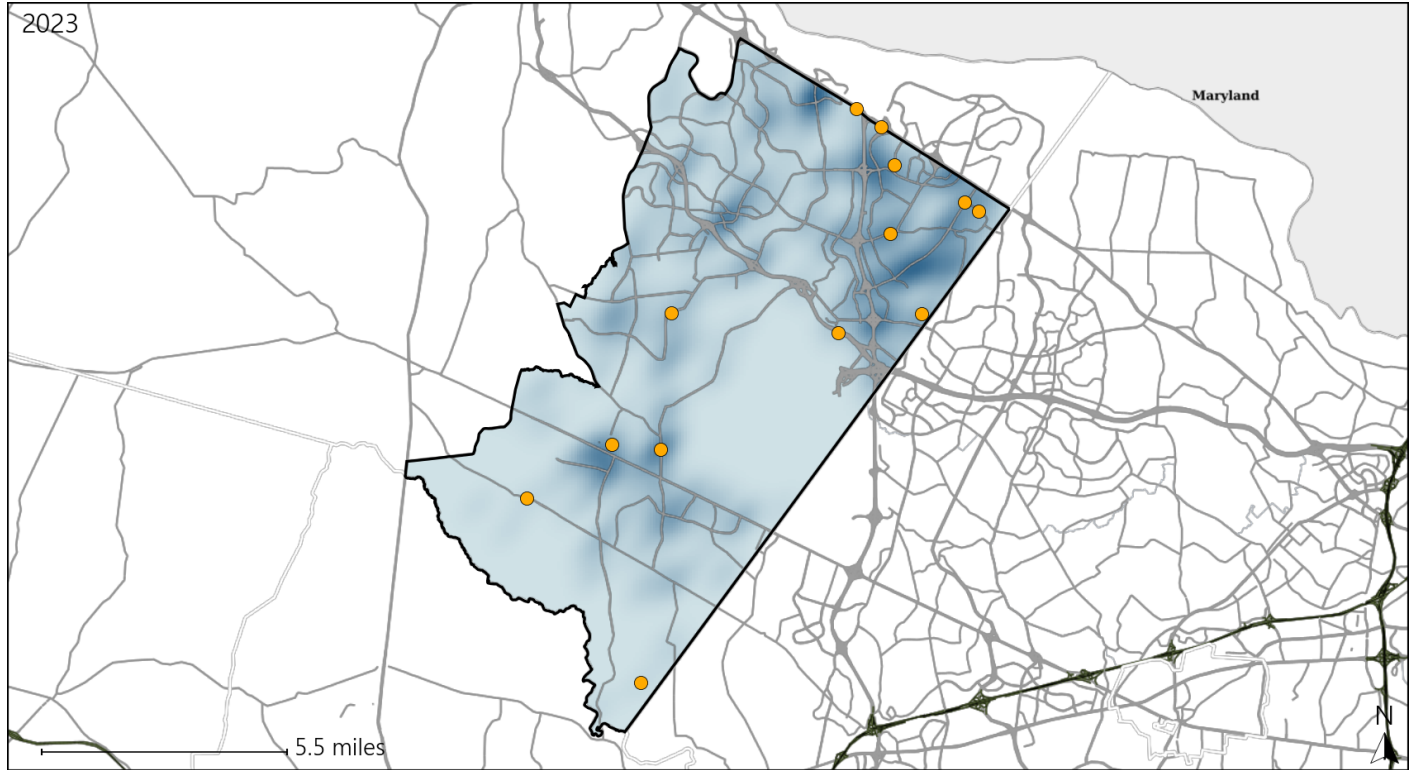


Available Crash Data - Calendar Year (CY)	CY 2020	CY 2021	CY 2022	CY 2023
Total Crashes	1610	2007	2439	2427
Fatal Crashes	4	4	7	7
Injury Crashes	381	500	565	581
Pedestrian-Related Fatal Crashes	0	0	0	3
Percent of Pedestrian-Related Fatal Crashes to Total Fatal Crashes	0%	0%	0%	43%
Pedestrian-Related Injury Crashes	20	25	26	28
Percent of Pedestrian-Related Injury Crashes to Total Injury Crashes	5%	5%	5%	5%

Virginia Senate District 32 Distracted Driving Crash Statistics

Report Generated May, 2024

	Count	Highest Time Period(s)	Highest Day(s)	Highest Month(s)
Fatal Crashes	0	-	-	-
Resulting Fatalities	0	-	-	-
Serious Injury Crashes	13	Noon - 2:59pm (31%)	Friday (31%)	October (23%)



Senate District 32 Distracted Driving-Related Crashes

- | | |
|--------------------|------------------------|
| Interstate Crashes | Non-interstate Crashes |
| ● Fatal | ● Fatal |
| ● Serious Injury | ● Serious Injury |

The blue gradient represents the density of all distracted driving-related crashes.



Available Crash Data - Calendar Year (CY)	CY 2020	CY 2021	CY 2022	CY 2023
Total Crashes	1610	2007	2439	2427
Fatal Crashes	4	4	7	7
Injury Crashes	381	500	565	581
Distracted Driving-Related Fatal Crashes	0	0	0	0
Percent of Distracted Driving-Related Fatal Crashes to Total Fatal Crashes	0%	0%	0%	0%
Distracted Driving-Related Injury Crashes	84	113	116	118
Percent of Distracted Driving-Related Injury Crashes to Total Injury Crashes	22%	23%	21%	20%