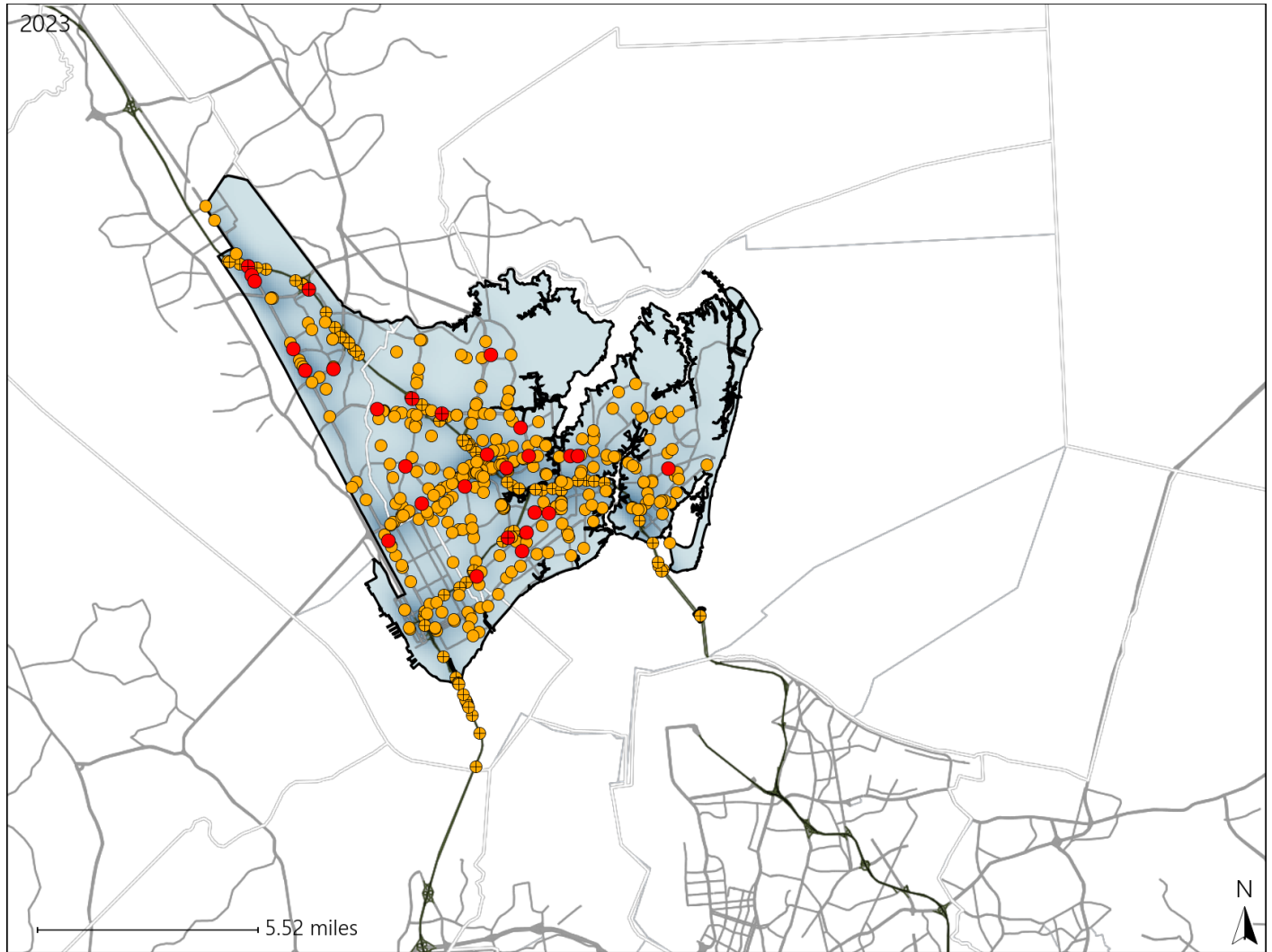


Virginia Senate District 23 Crash Statistics

Report Generated May, 2024

	Count	Highest Time Period(s)	Highest Day(s)	Highest Month(s)
Fatal Crashes	28	Midnight - 2:59am	Sunday	April
Resulting Fatalities	29	(25%)	(36%)	(18%)
Serious Injury Crashes	402	3:00pm - 5:59pm	Wednesday	April
		(21%)	(18%)	(11%)



Senate District 23 Crashes

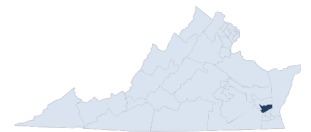
Interstate Crashes

- Fatal
- Serious Injury

Non-interstate Crashes

- Fatal
- Serious Injury

The blue gradient represents the density of all crashes.

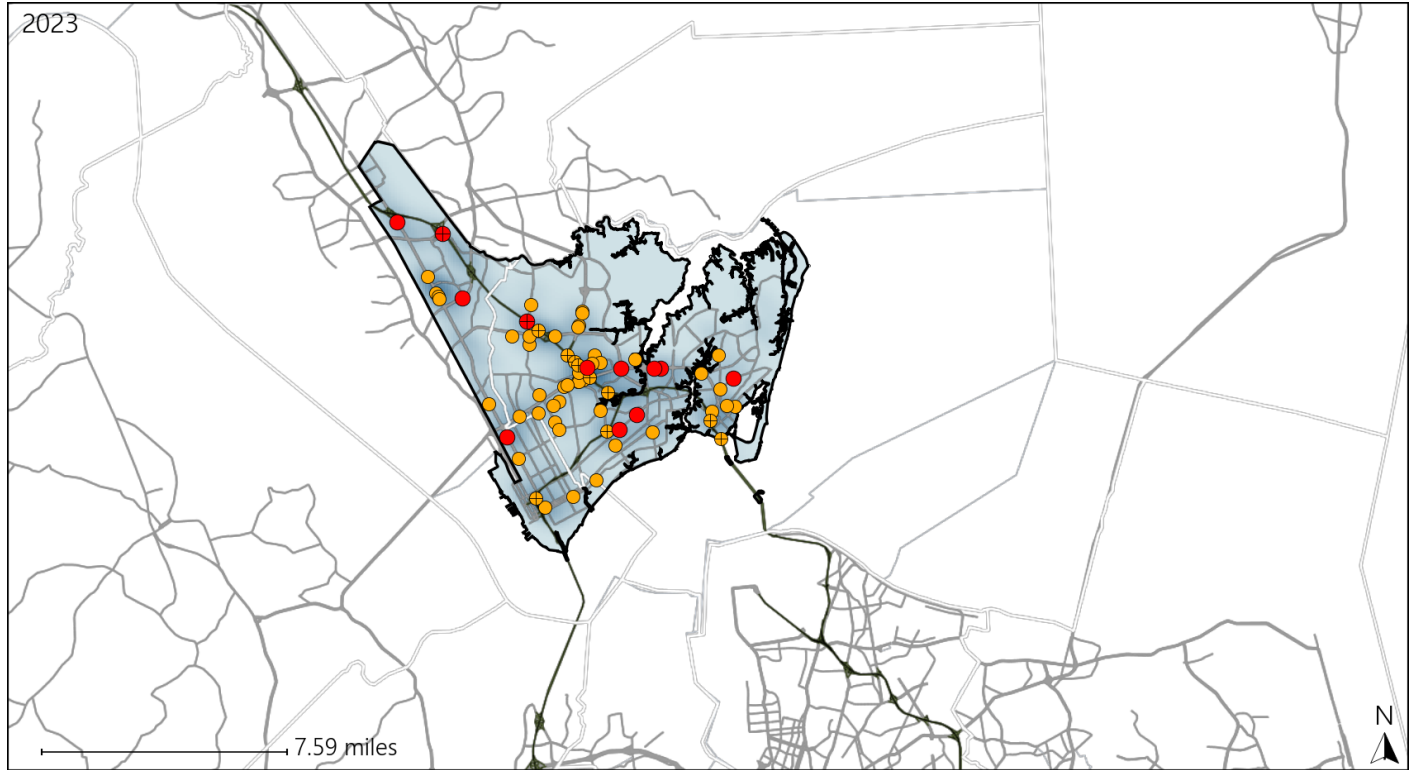


Available Crash Data - Calendar Year (CY)	CY 2020	CY 2021	CY 2022	CY 2023
Total Crashes	5106	5642	5406	5659
Fatal Crashes	33	19	23	28
Injury Crashes	2611	2939	2587	2658

Virginia Senate District 23 Alcohol Crash Statistics

Report Generated May, 2024

	Count	Highest Time Period(s)	Highest Day(s)	Highest Month(s)
Fatal Crashes	12	Midnight - 2:59am	Sunday	April
Resulting Fatalities	12	(33%)	(42%)	(25%)
Serious Injury Crashes	54	9:00pm - 11:59pm	Sunday	March
		(28%)	(22%)	(17%)



Senate District 23 Alcohol-Related Crashes

Interstate Crashes Non-interstate Crashes
 ● Fatal ● Fatal
 ⊕ Serious Injury ⊕ Serious Injury

The blue gradient represents the density of all alcohol-related crashes.

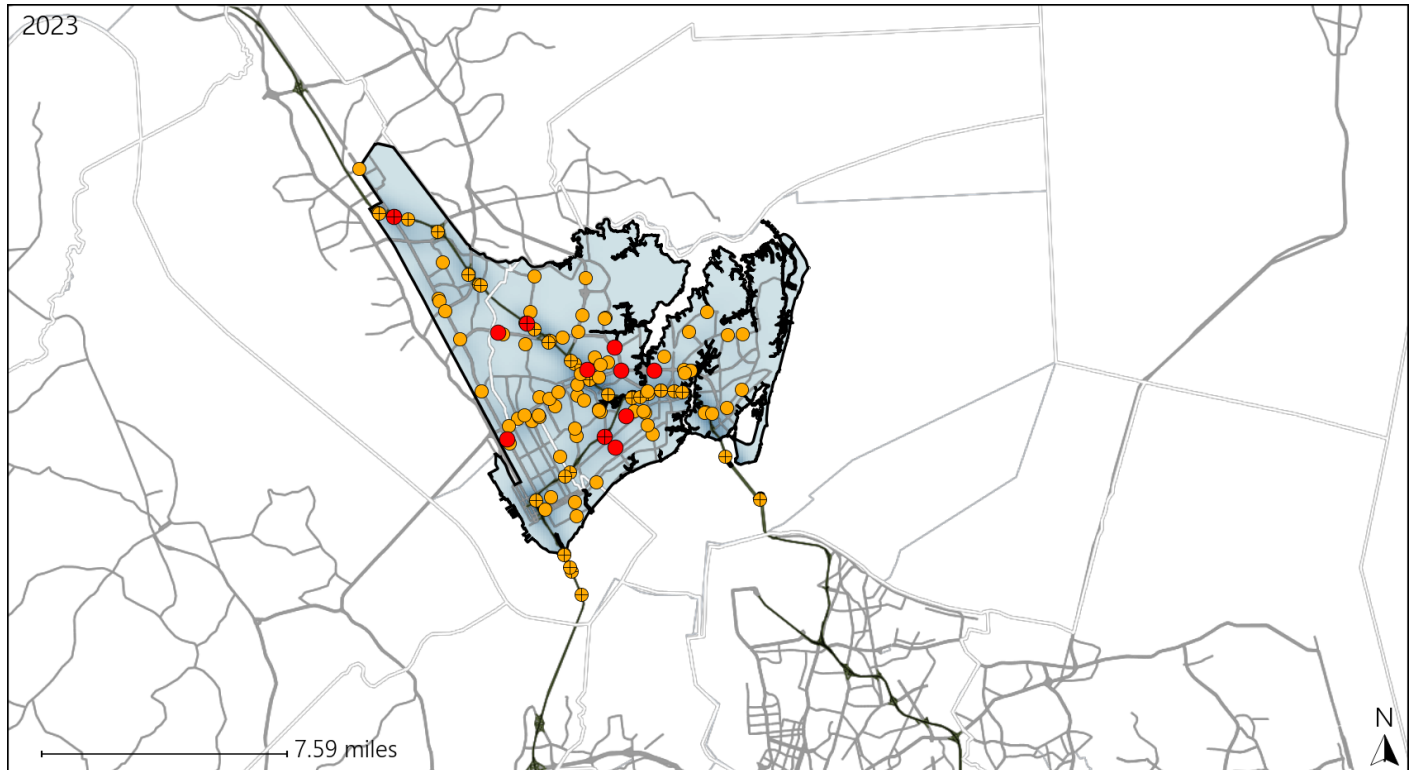


Available Crash Data - Calendar Year (CY)	CY 2020	CY 2021	CY 2022	CY 2023
Total Crashes	5106	5642	5406	5659
Fatal Crashes	33	19	23	28
Injury Crashes	2611	2939	2587	2658
Alcohol-Related Fatal Crashes	16	3	8	12
Percent of Alcohol-Related Fatal Crashes to Total Fatal Crashes	48%	16%	35%	43%
Alcohol-Related Injury Crashes	142	176	140	158
Percent of Alcohol-Related Injury Crashes to Total Injury Crashes	5%	6%	5%	6%

Virginia Senate District 23 Speed Crash Statistics

Report Generated May, 2024

	Count	Highest Time Period(s)	Highest Day(s)	Highest Month(s)
Fatal Crashes	11	Midnight - 2:59am	Sunday	April • August
Resulting Fatalities	11	(36%)	(36%)	(36%)
Serious Injury Crashes	101	3:00pm - 5:59pm	Wednesday	March
		(20%)	(21%)	(15%)



Senate District 23 Speed-Related Crashes

Interstate Crashes Non-interstate Crashes
 ● Fatal ● Fatal
 ● Serious Injury ● Serious Injury

The blue gradient represents the density of all speed-related crashes.

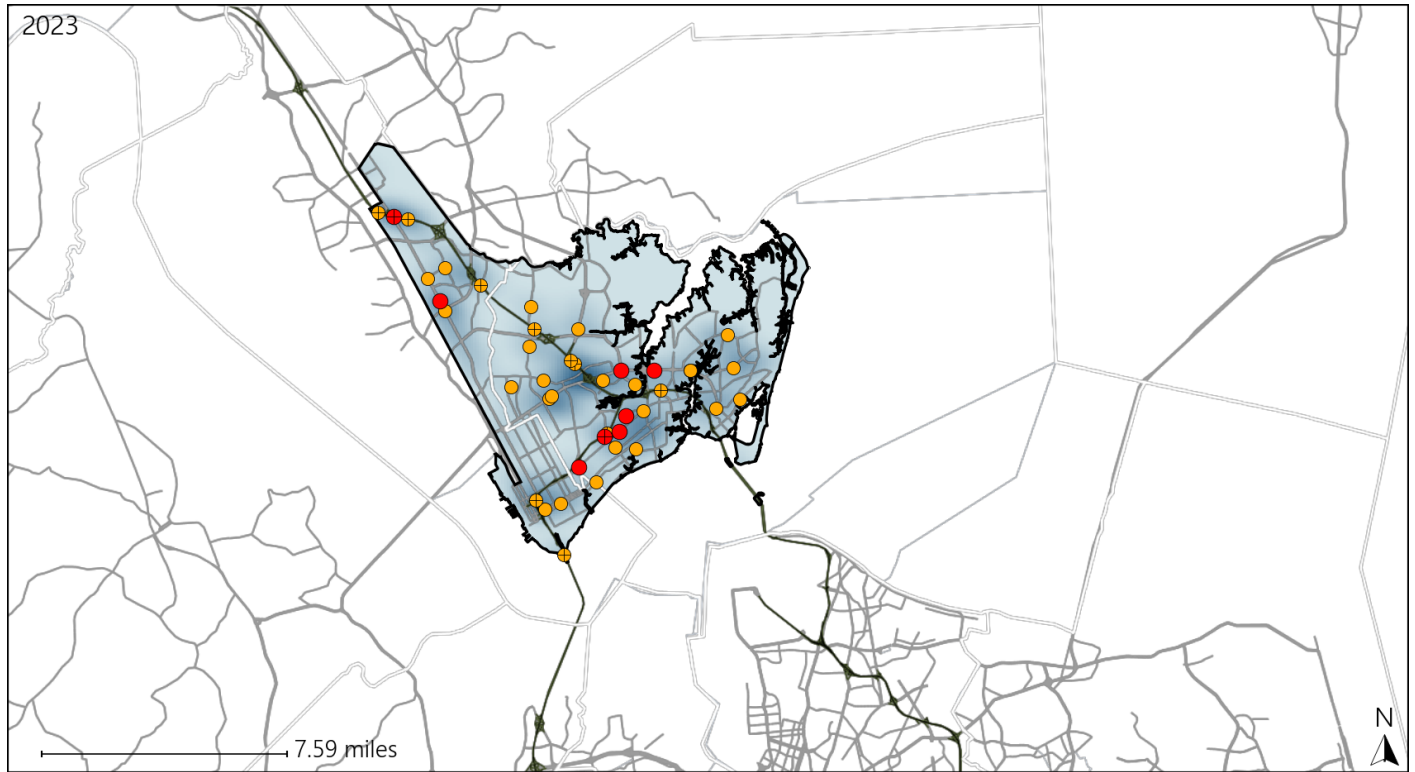


Available Crash Data - Calendar Year (CY)	CY 2020	CY 2021	CY 2022	CY 2023
Total Crashes	5106	5642	5406	5659
Fatal Crashes	33	19	23	28
Injury Crashes	2611	2939	2587	2658
Speed-Related Fatal Crashes	23	13	9	11
Percent of Speed-Related Fatal Crashes to Total Fatal Crashes	70%	68%	39%	39%
Speed-Related Injury Crashes	433	423	405	389
Percent of Speed-Related Injury Crashes to Total Injury Crashes	17%	14%	16%	15%

Virginia Senate District 23 Unrestrained Crash Statistics

Report Generated May, 2024

	Count	Highest Time Period(s)	Highest Day(s)	Highest Month(s)
Fatal Crashes	8	3:00pm - 5:59pm	Friday • Monday	April • January
Unrestrained Fatalities	9	(38%)	(50%)	(50%)
Serious Injury Crashes	34	6:00pm - 8:59pm	Wednesday	July
		(24%)	(26%)	(18%)



Senate District 23 Unrestrained-Related Crashes

Interstate Crashes

- Fatal
- Serious Injury

Non-interstate Crashes

- Fatal
- Serious Injury

The blue gradient represents the density of all unrestrained-related crashes.

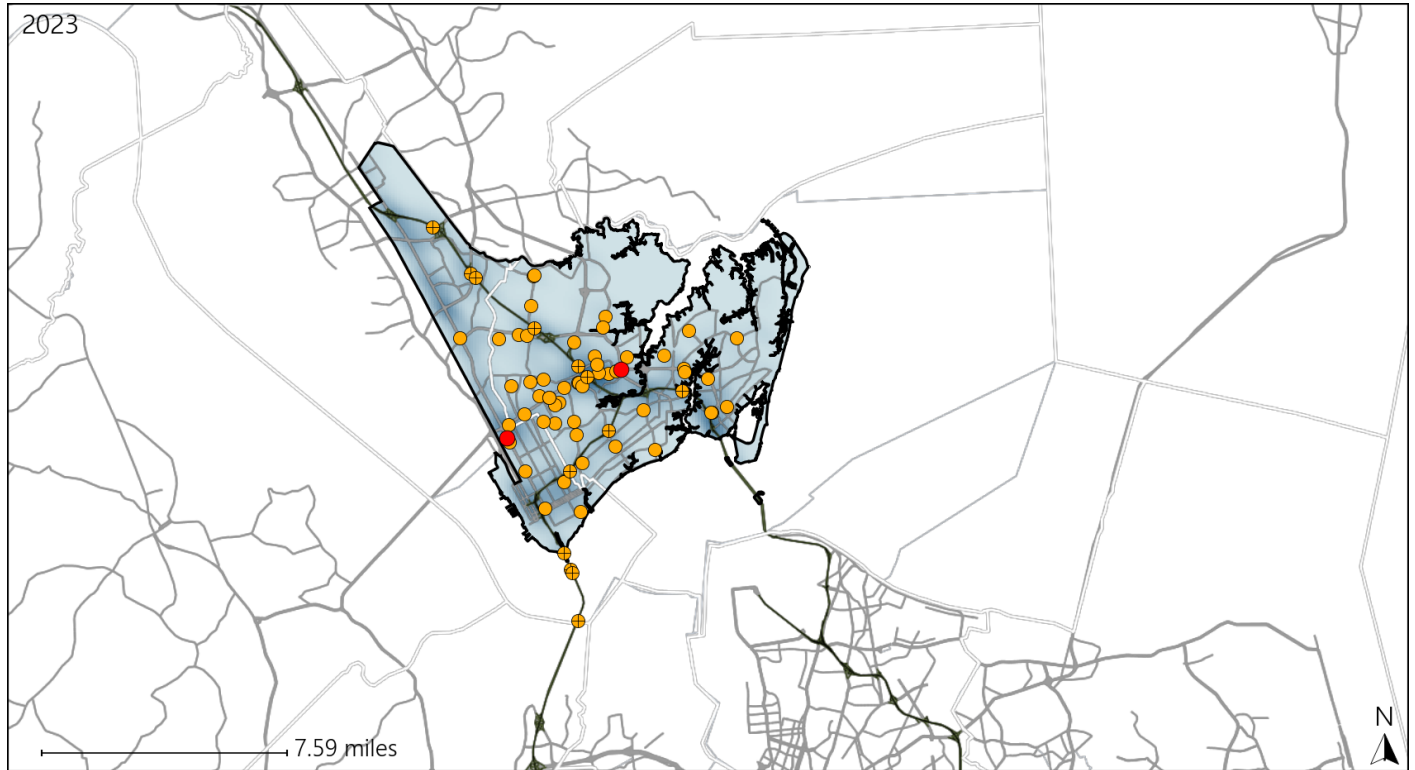


Available Crash Data - Calendar Year (CY)	CY 2020	CY 2021	CY 2022	CY 2023
Total Crashes	5106	5642	5406	5659
Fatalities	35	19	24	29
Injuries	4303	4836	4487	4658
Unrestrained Fatalities	19	3	6	9
Percent of Unrestrained Fatalities to Total Fatalities	54%	16%	25%	31%
Unrestrained Injuries	132	158	130	142
Percent of Unrestrained Injuries to Total Injuries	3%	3%	3%	3%

Virginia Senate District 23 Distracted Driving Crash Statistics

Report Generated May, 2024

	Count	Highest Time Period(s)	Highest Day(s)	Highest Month(s)
Fatal Crashes	2	Midnight - 2:59am	Saturday • Wednesday	April • June
Resulting Fatalities	2	Noon - 2:59pm (100%)	(100%)	(100%)
Serious Injury Crashes	65	3:00pm - 5:59pm (26%)	Wednesday (25%)	February (14%)



Senate District 23 Distracted Driving-Related Crashes

- | | |
|--------------------|------------------------|
| Interstate Crashes | Non-interstate Crashes |
| ● Fatal | ● Fatal |
| ● Serious Injury | ● Serious Injury |

The blue gradient represents the density of all distracted driving-related crashes.



Available Crash Data - Calendar Year (CY)	CY 2020	CY 2021	CY 2022	CY 2023
Total Crashes	5106	5642	5406	5659
Fatal Crashes	33	19	23	28
Injury Crashes	2611	2939	2587	2658
Distracted Driving-Related Fatal Crashes	3	1	4	2
Percent of Distracted Driving-Related Fatal Crashes to Total Fatal Crashes	9%	5%	17%	7%
Distracted Driving-Related Injury Crashes	441	524	393	439
Percent of Distracted Driving-Related Injury Crashes to Total Injury Crashes	17%	18%	15%	17%