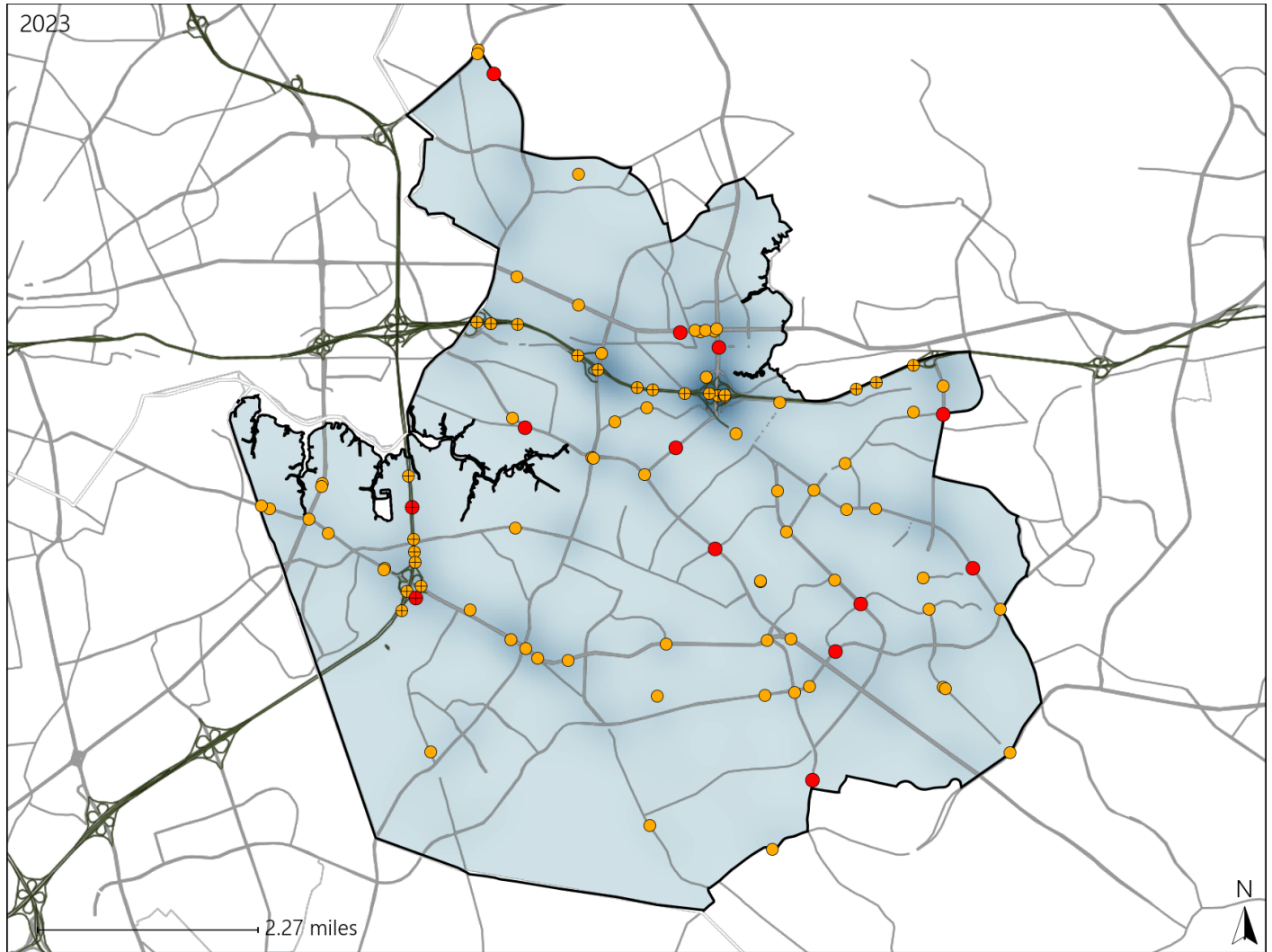


# Virginia Senate District 22 Crash Statistics

Report Generated May, 2024

	Count	Highest Time Period(s)	Highest Day(s)	Highest Month(s)
<b>Fatal Crashes</b>	<b>13</b>	<b>6:00pm - 8:59pm</b>	<b>Friday • Monday</b>	<b>September</b>
<b>Resulting Fatalities</b>	<b>13</b>	(46%)	(46%)	(23%)
<b>Serious Injury Crashes</b>	<b>86</b>	<b>6:00pm - 8:59pm</b>	<b>Sunday</b>	<b>November</b>
		(28%)	(21%)	(16%)



### Senate District 22 Crashes

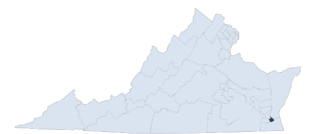
Interstate Crashes

- Fatal
- Serious Injury

Non-interstate Crashes

- Fatal
- Serious Injury

The blue gradient represents the density of all crashes.

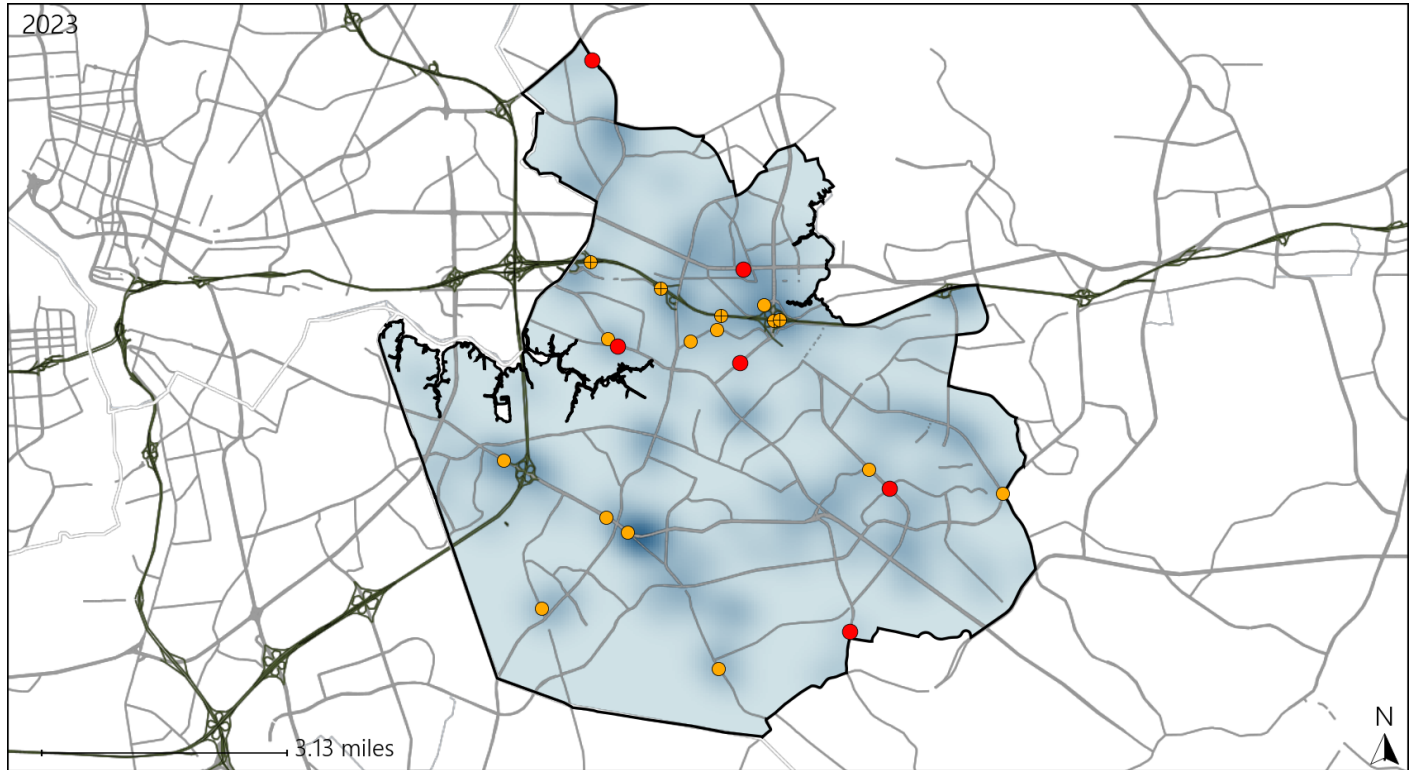


Available Crash Data - Calendar Year (CY)	CY 2020	CY 2021	CY 2022	CY 2023
<b>Total Crashes</b>	<b>2632</b>	<b>2939</b>	<b>2639</b>	<b>2612</b>
<b>Fatal Crashes</b>	<b>9</b>	<b>14</b>	<b>10</b>	<b>13</b>
<b>Injury Crashes</b>	<b>801</b>	<b>988</b>	<b>851</b>	<b>847</b>

# Virginia Senate District 22 Alcohol Crash Statistics

Report Generated May, 2024

	Count	Highest Time Period(s)	Highest Day(s)	Highest Month(s)
<b>Fatal Crashes</b>	<b>6</b>	<b>6:00pm - 8:59pm</b>	<b>Friday • Monday</b>	<b>September</b>
<b>Resulting Fatalities</b>	<b>6</b>	<b>Midnight - 2:59am</b> (66%)	<b>(66%)</b>	<b>(50%)</b>
<b>Serious Injury Crashes</b>	<b>16</b>	<b>6:00pm - 8:59pm</b> (38%)	<b>Friday</b> (31%)	<b>December • June</b> (38%)



### Senate District 22 Alcohol-Related Crashes

Interstate Crashes

Non-interstate Crashes

- Fatal
- Serious Injury

- Fatal
- Serious Injury

The blue gradient represents the density of all alcohol-related crashes.

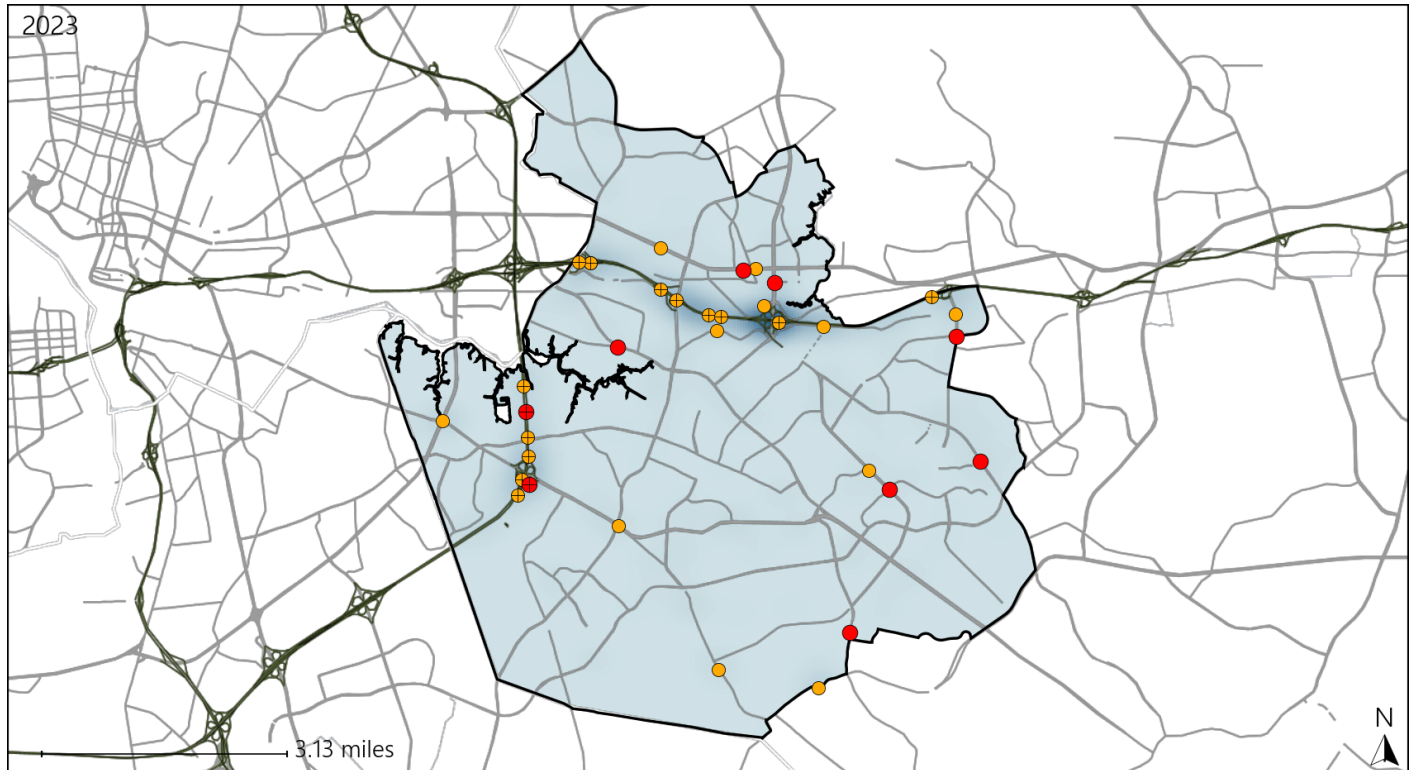


Available Crash Data - Calendar Year (CY)	CY 2020	CY 2021	CY 2022	CY 2023
Total Crashes	2632	2939	2639	2612
Fatal Crashes	9	14	10	13
Injury Crashes	801	988	851	847
Alcohol-Related Fatal Crashes	4	9	3	6
Percent of Alcohol-Related Fatal Crashes to Total Fatal Crashes	44%	64%	30%	46%
Alcohol-Related Injury Crashes	67	75	50	68
Percent of Alcohol-Related Injury Crashes to Total Injury Crashes	8%	8%	6%	8%

# Virginia Senate District 22 Speed Crash Statistics

Report Generated May, 2024

	Count	Highest Time Period(s)	Highest Day(s)	Highest Month(s)
<b>Fatal Crashes</b>	<b>9</b>	<b>6:00pm - 8:59pm</b>	<b>Saturday • Sunday</b>	<b>September</b>
<b>Resulting Fatalities</b>	<b>9</b>	(44%)	(44%)	(33%)
<b>Serious Injury Crashes</b>	<b>25</b>	<b>6:00pm - 8:59pm</b>	<b>Sunday</b>	<b>December</b>
		(44%)	(36%)	(20%)



### Senate District 22 Speed-Related Crashes

Interstate Crashes                      Non-interstate Crashes  
 ● Fatal                                      ● Fatal  
 ⊕ Serious Injury                          ⊕ Serious Injury

The blue gradient represents the density of all speed-related crashes.

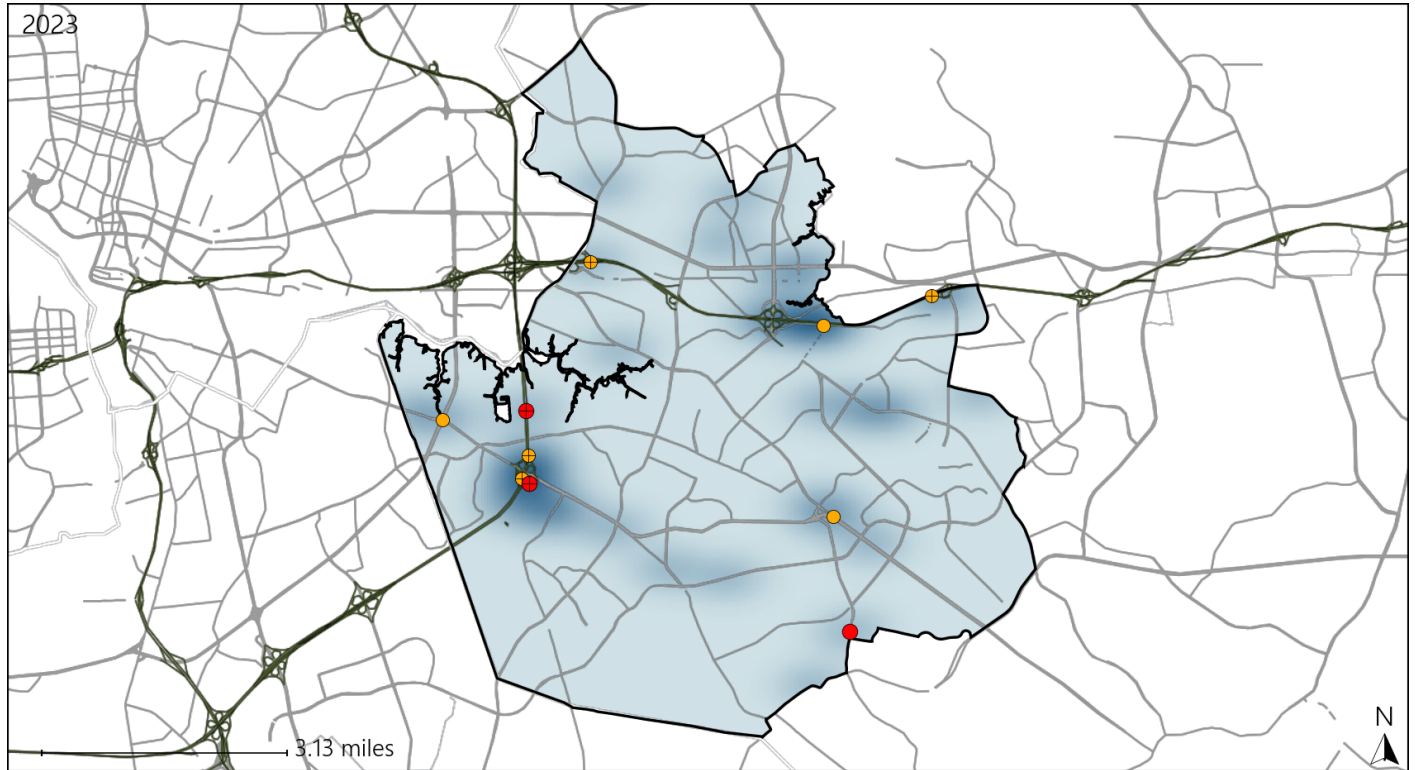


Available Crash Data - Calendar Year (CY)	CY 2020	CY 2021	CY 2022	CY 2023
Total Crashes	2632	2939	2639	2612
Fatal Crashes	9	14	10	13
Injury Crashes	801	988	851	847
Speed-Related Fatal Crashes	6	9	5	9
Percent of Speed-Related Fatal Crashes to Total Fatal Crashes	67%	64%	50%	69%
Speed-Related Injury Crashes	159	154	157	145
Percent of Speed-Related Injury Crashes to Total Injury Crashes	20%	16%	18%	17%

# Virginia Senate District 22 Unrestrained Crash Statistics

Report Generated May, 2024

	Count	Highest Time Period(s)	Highest Day(s)	Highest Month(s)
<b>Fatal Crashes</b>	<b>3</b>	<b>6:00am - 8:59am</b>	<b>Saturday • Sunday</b>	<b>December • July</b>
<b>Unrestrained Fatalities</b>	<b>3</b>	<b>6:00pm - 8:59pm</b> (66%)	<b>(66%)</b>	<b>(66%)</b>
<b>Serious Injury Crashes</b>	<b>7</b>	<b>6:00pm - 8:59pm</b> (43%)	<b>Friday • Monday</b> (58%)	<b>April • August</b> (28%)



### Senate District 22 Unrestrained-Related Crashes

Interstate Crashes

Non-interstate Crashes

● Fatal

● Fatal

● Serious Injury

● Serious Injury

The blue gradient represents the density of all unrestrained-related crashes.

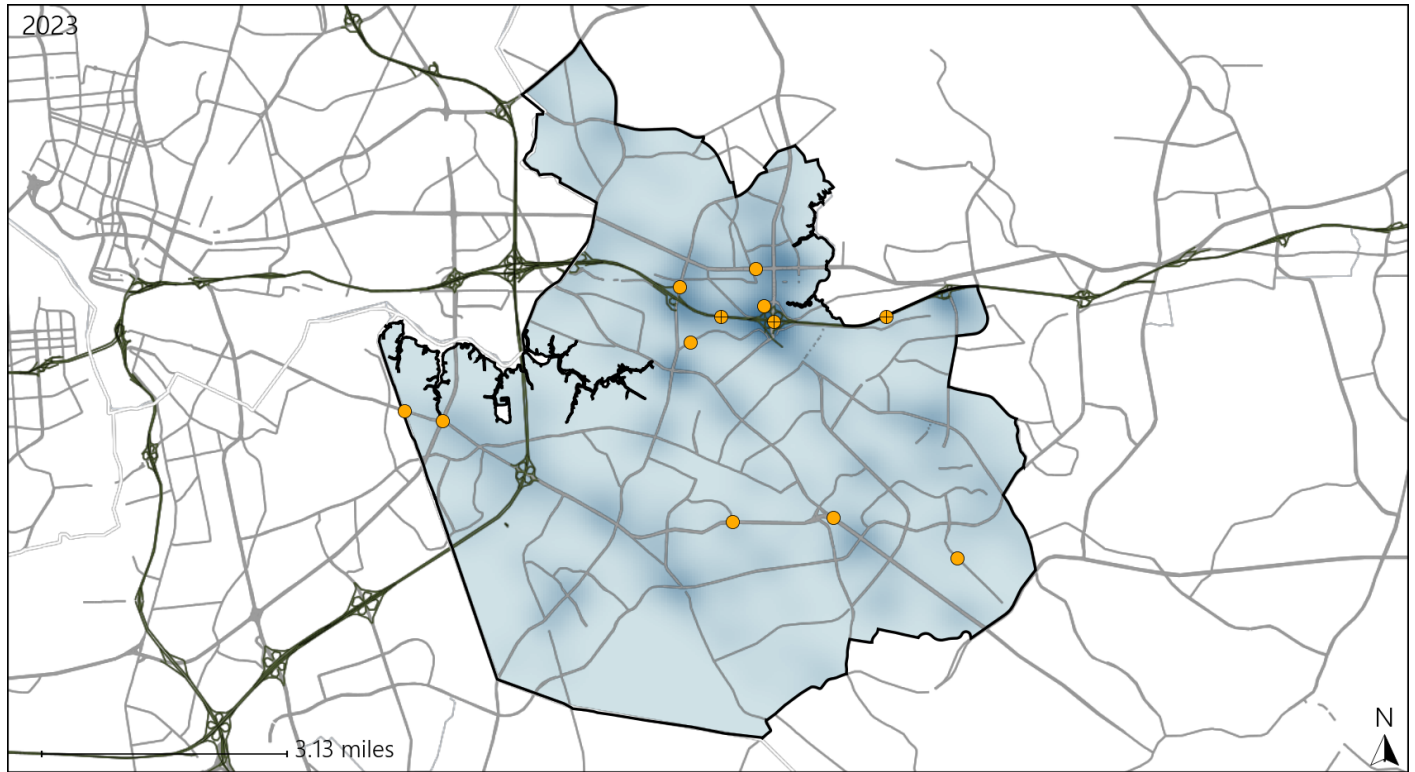


Available Crash Data - Calendar Year (CY)	CY 2020	CY 2021	CY 2022	CY 2023
Total Crashes	2632	2939	2639	2612
Fatalities	10	15	10	13
Injuries	1328	1642	1413	1416
Unrestrained Fatalities	4	3	3	3
Percent of Unrestrained Fatalities to Total Fatalities	40%	20%	30%	23%
Unrestrained Injuries	43	57	47	39
Percent of Unrestrained Injuries to Total Injuries	3%	3%	3%	3%

# Virginia Senate District 22 Distracted Driving Crash Statistics

Report Generated May, 2024

	Count	Highest Time Period(s)	Highest Day(s)	Highest Month(s)
<b>Fatal Crashes</b>	<b>0</b>	-	-	-
<b>Resulting Fatalities</b>	<b>0</b>	-	-	-
<b>Serious Injury Crashes</b>	<b>12</b>	<b>9:00pm - 11:59pm</b> (25%)	<b>Sunday</b> (42%)	<b>December • February</b> (34%)



### Senate District 22 Distracted Driving-Related Crashes

- |  |  |
|--|--|
| Interstate Crashes                                   | Non-interstate Crashes                               |
| <span style="color: red;">●</span> Fatal             | <span style="color: red;">●</span> Fatal             |
| <span style="color: orange;">●</span> Serious Injury | <span style="color: orange;">●</span> Serious Injury |

The blue gradient represents the density of all distracted driving-related crashes.



Available Crash Data - Calendar Year (CY)	CY 2020	CY 2021	CY 2022	CY 2023
Total Crashes	2632	2939	2639	2612
Fatal Crashes	9	14	10	13
Injury Crashes	801	988	851	847
Distracted Driving-Related Fatal Crashes	2	0	2	0
Percent of Distracted Driving-Related Fatal Crashes to Total Fatal Crashes	22%	0%	20%	0%
Distracted Driving-Related Injury Crashes	141	173	131	135
Percent of Distracted Driving-Related Injury Crashes to Total Injury Crashes	18%	18%	15%	16%