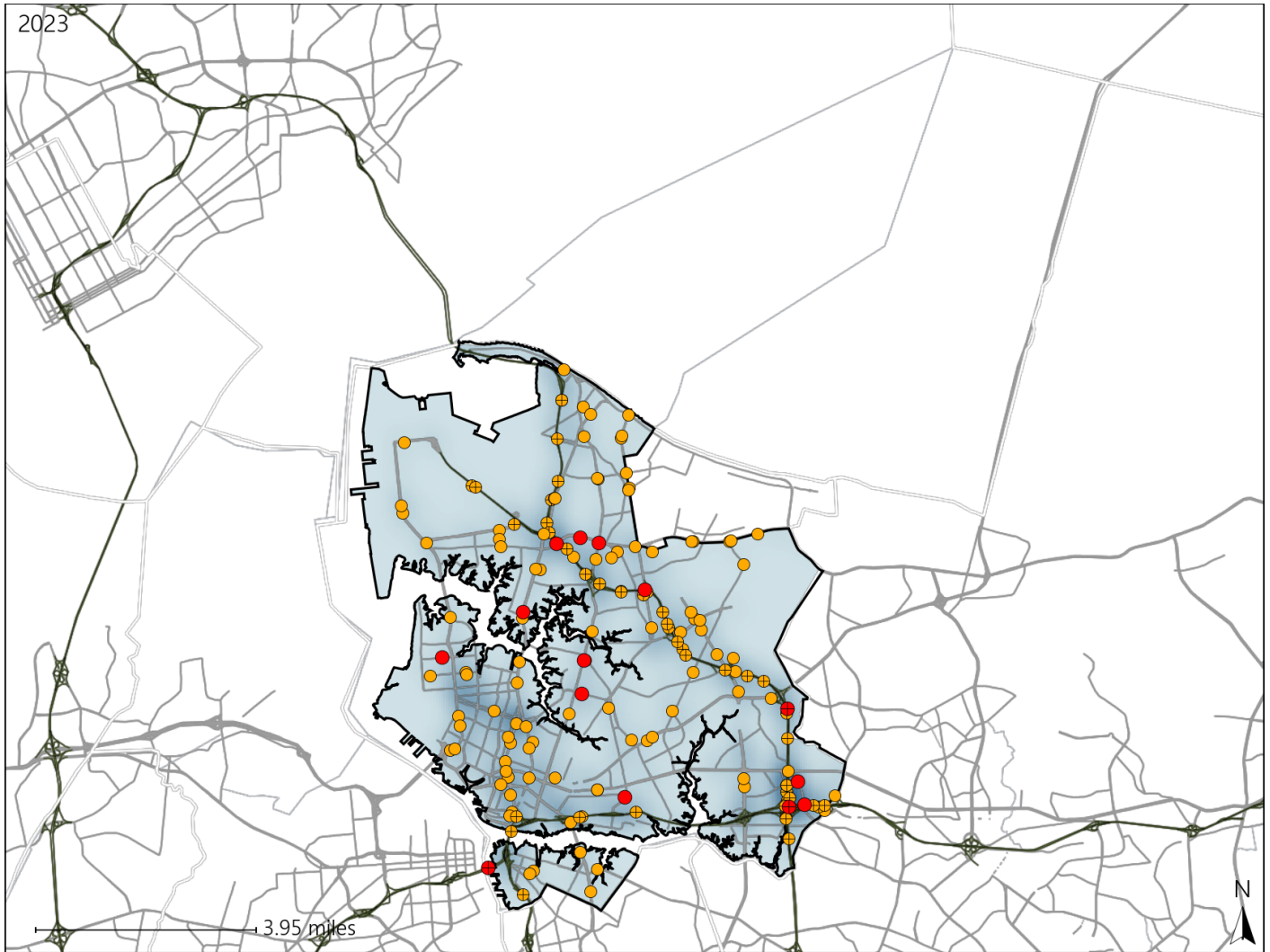


# Virginia Senate District 21 Crash Statistics

Report Generated May, 2024

	Count	Highest Time Period(s)	Highest Day(s)	Highest Month(s)
<b>Fatal Crashes</b>	<b>14</b>	6:00pm - 8:59pm (29%)	Tuesday • Wednesday (42%)	January (29%)
<b>Resulting Fatalities</b>	<b>14</b>			
<b>Serious Injury Crashes</b>	<b>146</b>	3:00pm - 5:59pm (23%)	Saturday (19%)	August • November (24%)



### Senate District 21 Crashes

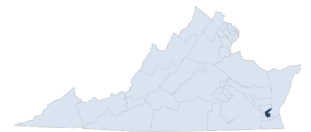
Interstate Crashes

- Fatal
- Serious Injury

Non-interstate Crashes

- Fatal
- Serious Injury

The blue gradient represents the density of all crashes.

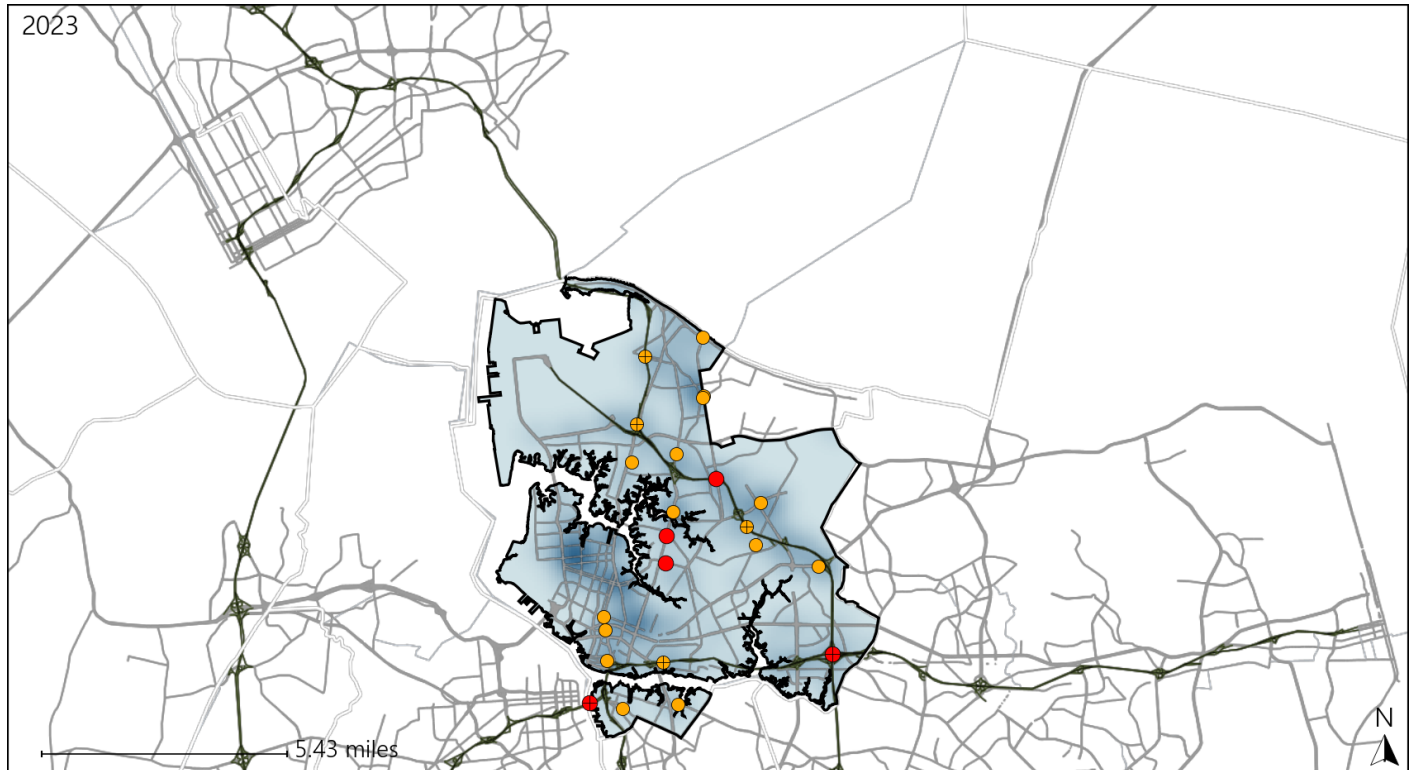


Available Crash Data - Calendar Year (CY)	CY 2020	CY 2021	CY 2022	CY 2023
Total Crashes	3693	4199	3675	4192
Fatal Crashes	22	25	21	14
Injury Crashes	1259	1399	1197	1356

# Virginia Senate District 21 Alcohol Crash Statistics

Report Generated May, 2024

	Count	Highest Time Period(s)	Highest Day(s)	Highest Month(s)
<b>Fatal Crashes</b>	<b>5</b>	<b>9:00pm - 11:59pm</b>	<b>Friday • Monday</b>	<b>August</b>
<b>Resulting Fatalities</b>	<b>5</b>	<b>(40%)</b>	<b>(40%)</b>	<b>(40%)</b>
<b>Serious Injury Crashes</b>	<b>18</b>	<b>Midnight - 2:59am</b>	<b>Saturday</b>	<b>August • July</b>
		<b>(39%)</b>	<b>(44%)</b>	<b>(34%)</b>



### Senate District 21 Alcohol-Related Crashes

Interstate Crashes

Non-interstate Crashes

- Fatal
- Serious Injury

- Fatal
- Serious Injury

The blue gradient represents the density of all alcohol-related crashes.

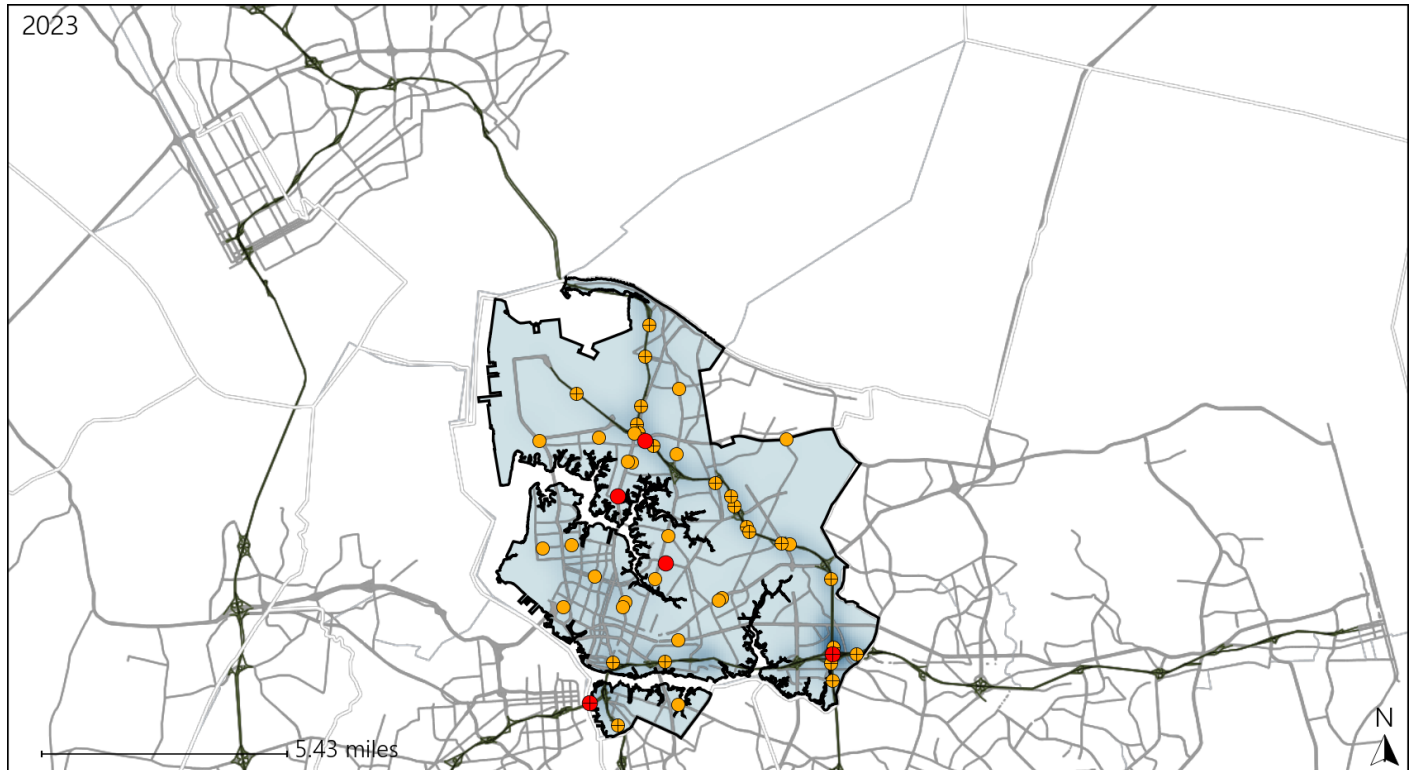


Available Crash Data - Calendar Year (CY)	CY 2020	CY 2021	CY 2022	CY 2023
Total Crashes	3693	4199	3675	4192
Fatal Crashes	22	25	21	14
Injury Crashes	1259	1399	1197	1356
Alcohol-Related Fatal Crashes	8	11	8	5
Percent of Alcohol-Related Fatal Crashes to Total Fatal Crashes	36%	44%	38%	36%
Alcohol-Related Injury Crashes	76	85	87	68
Percent of Alcohol-Related Injury Crashes to Total Injury Crashes	6%	6%	7%	5%

# Virginia Senate District 21 Speed Crash Statistics

Report Generated May, 2024

	Count	Highest Time Period(s)	Highest Day(s)	Highest Month(s)
<b>Fatal Crashes</b>	<b>5</b>	<b>3:00am - 5:59am</b>	<b>Friday • Monday</b>	<b>January</b>
<b>Resulting Fatalities</b>	<b>5</b>	(40%)	(40%)	(60%)
<b>Serious Injury Crashes</b>	<b>43</b>	<b>3:00pm - 5:59pm</b>	<b>Sunday</b>	<b>October</b>
		(21%)	(23%)	(19%)



### Senate District 21 Speed-Related Crashes

Interstate Crashes                      Non-interstate Crashes  
 ● Fatal                                      ● Fatal  
 ⊕ Serious Injury                          ⊕ Serious Injury

The blue gradient represents the density of all speed-related crashes.

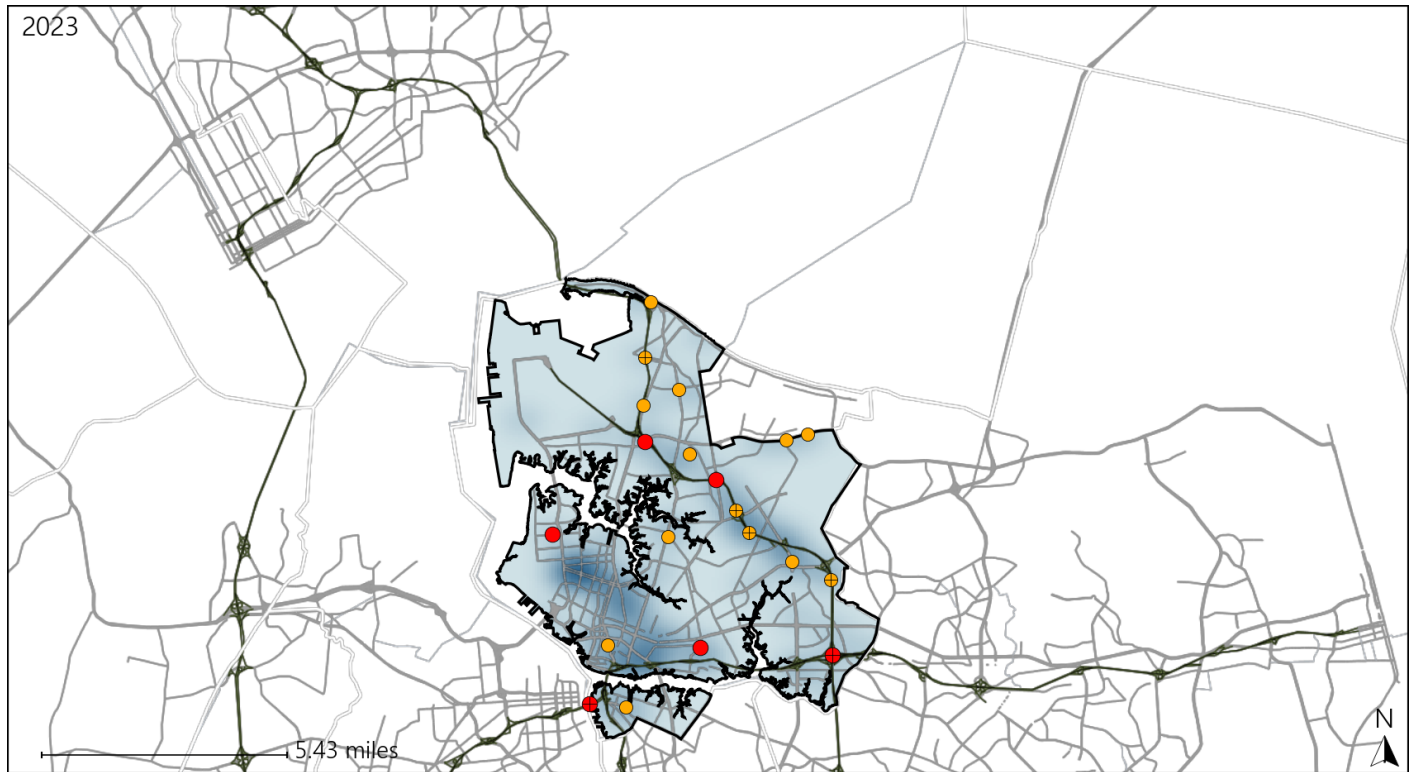


Available Crash Data - Calendar Year (CY)	CY 2020	CY 2021	CY 2022	CY 2023
<b>Total Crashes</b>	<b>3693</b>	<b>4199</b>	<b>3675</b>	<b>4192</b>
<b>Fatal Crashes</b>	<b>22</b>	<b>25</b>	<b>21</b>	<b>14</b>
<b>Injury Crashes</b>	<b>1259</b>	<b>1399</b>	<b>1197</b>	<b>1356</b>
<b>Speed-Related Fatal Crashes</b>	<b>11</b>	<b>10</b>	<b>8</b>	<b>5</b>
<b>Percent of Speed-Related Fatal Crashes to Total Fatal Crashes</b>	<b>50%</b>	<b>40%</b>	<b>38%</b>	<b>36%</b>
<b>Speed-Related Injury Crashes</b>	<b>354</b>	<b>361</b>	<b>306</b>	<b>312</b>
<b>Percent of Speed-Related Injury Crashes to Total Injury Crashes</b>	<b>28%</b>	<b>26%</b>	<b>26%</b>	<b>23%</b>

# Virginia Senate District 21 Unrestrained Crash Statistics

Report Generated May, 2024

	Count	Highest Time Period(s)	Highest Day(s)	Highest Month(s)
<b>Fatal Crashes</b>	<b>6</b>	<b>3:00am - 5:59am</b>	<b>Friday • Monday</b>	<b>January • November</b>
<b>Unrestrained Fatalities</b>	<b>6</b>	(33%)	(34%)	(66%)
<b>Serious Injury Crashes</b>	<b>14</b>	<b>3:00pm - 5:59pm</b> <b>6:00am - 8:59am</b>	<b>Friday • Thursday</b>	<b>April • July</b>
		(42%)	(42%)	(28%)



### Senate District 21 Unrestrained-Related Crashes

- |                    |                        |
|--------------------|------------------------|
| Interstate Crashes | Non-interstate Crashes |
| ● Fatal            | ● Fatal                |
| ⊕ Serious Injury   | ⊕ Serious Injury       |

The blue gradient represents the density of all unrestrained-related crashes.

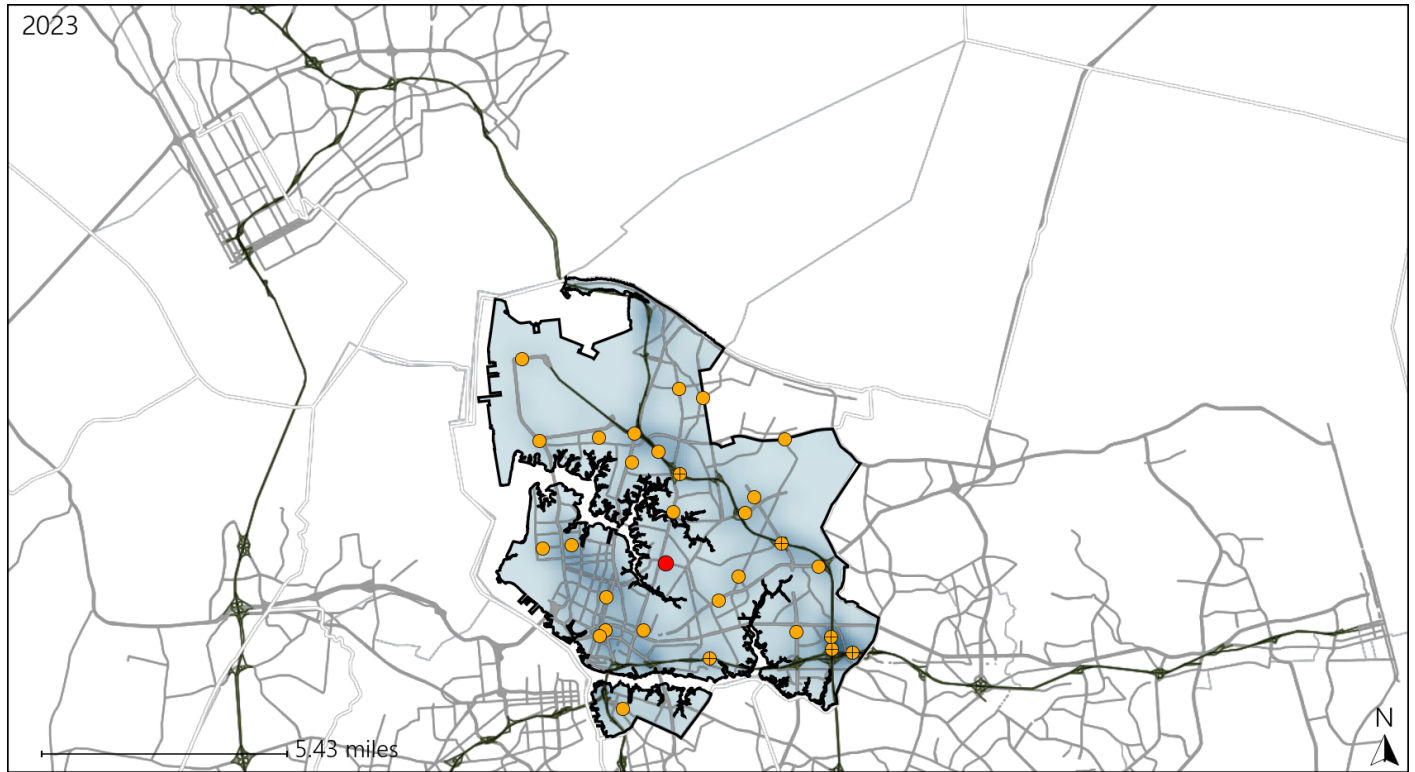


Available Crash Data - Calendar Year (CY)	CY 2020	CY 2021	CY 2022	CY 2023
Total Crashes	3693	4199	3675	4192
Fatalities	24	26	21	14
Injuries	1921	2119	1857	2124
Unrestrained Fatalities	8	9	6	6
Percent of Unrestrained Fatalities to Total Fatalities	33%	35%	29%	43%
Unrestrained Injuries	95	92	76	100
Percent of Unrestrained Injuries to Total Injuries	5%	4%	4%	5%


# Virginia Senate District 21 Distracted Driving Crash Statistics

Report Generated May, 2024

	Count	Highest Time Period(s)	Highest Day(s)	Highest Month(s)
<b>Fatal Crashes</b>	<b>1</b>	<b>9:00pm - 11:59pm</b>	<b>Friday</b>	<b>August</b>
<b>Resulting Fatalities</b>	<b>1</b>	(100%)	(100%)	(100%)
<b>Serious Injury Crashes</b>	<b>29</b>	<b>Noon - 2:59pm</b>	<b>Saturday</b>	<b>August • November</b>
		(24%)	(24%)	(34%)



## Senate District 21 Distracted Driving-Related Crashes

- |  |  |
|--|--|
| Interstate Crashes   | Non-interstate Crashes   |
|  Fatal          |  Fatal          |
|  Serious Injury |  Serious Injury |

The blue gradient represents the density of all distracted driving-related crashes.



Available Crash Data - Calendar Year (CY)	CY 2020	CY 2021	CY 2022	CY 2023
Total Crashes	3693	4199	3675	4192
Fatal Crashes	22	25	21	14
Injury Crashes	1259	1399	1197	1356
Distracted Driving-Related Fatal Crashes	3	4	0	1
Percent of Distracted Driving-Related Fatal Crashes to Total Fatal Crashes	14%	16%	0%	7%
Distracted Driving-Related Injury Crashes	183	208	205	212
Percent of Distracted Driving-Related Injury Crashes to Total Injury Crashes	15%	15%	17%	16%