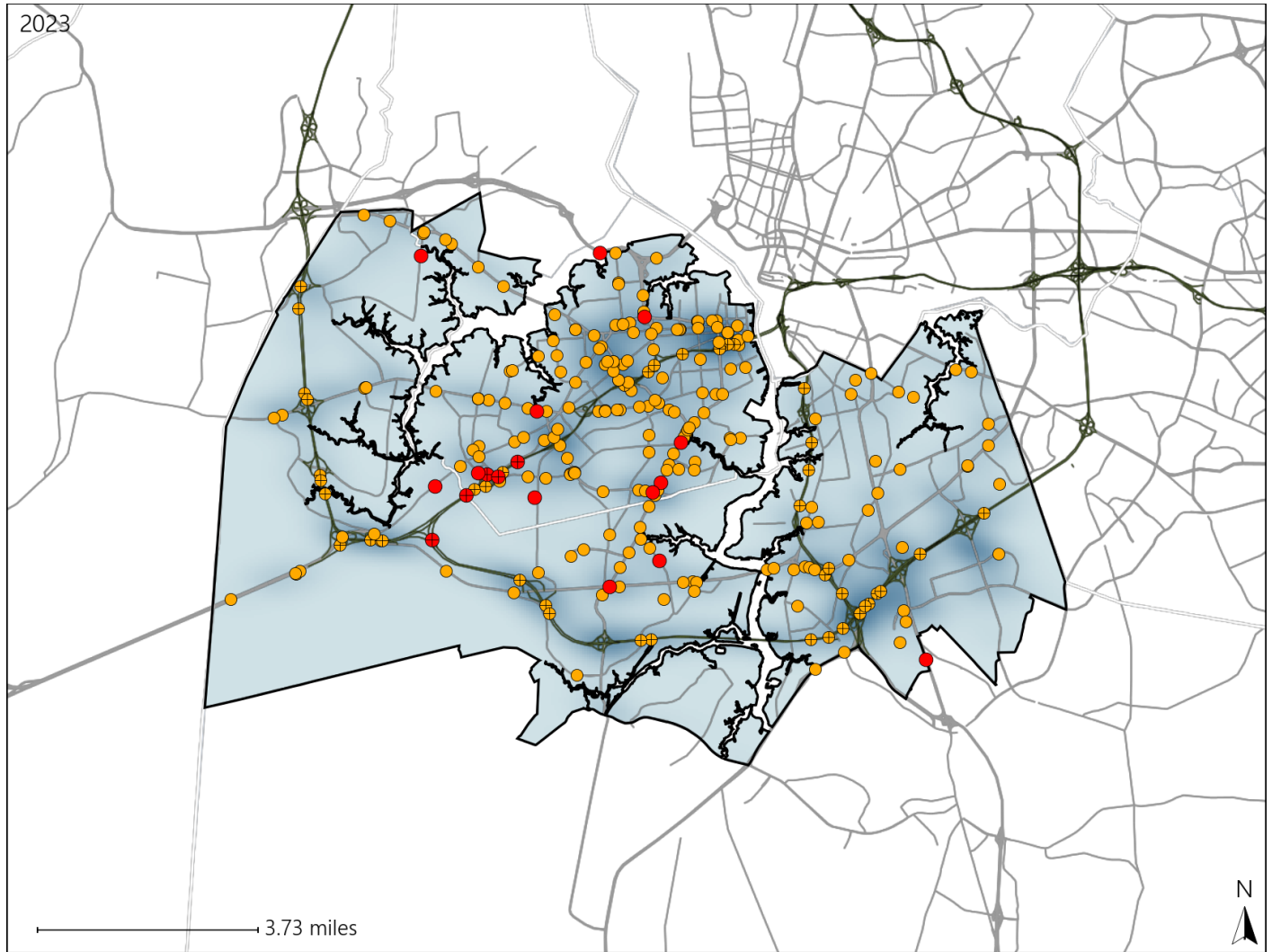


# Virginia Senate District 18 Crash Statistics

Report Generated May, 2024

	Count	Highest Time Period(s)	Highest Day(s)	Highest Month(s)
<b>Fatal Crashes</b>	<b>18</b>	<b>9:00pm - 11:59pm</b>	<b>Friday - Thursday</b>	<b>August</b>
<b>Resulting Fatalities</b>	<b>19</b>	(33%)	(44%)	(22%)
<b>Serious Injury Crashes</b>	<b>250</b>	<b>3:00pm - 5:59pm</b>	<b>Sunday</b>	<b>June</b>
		(22%)	(18%)	(11%)



### Senate District 18 Crashes

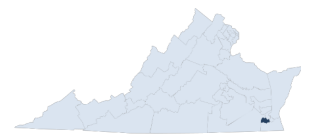
Interstate Crashes

- Fatal
- Serious Injury

Non-interstate Crashes

- Fatal
- Serious Injury

The blue gradient represents the density of all crashes.

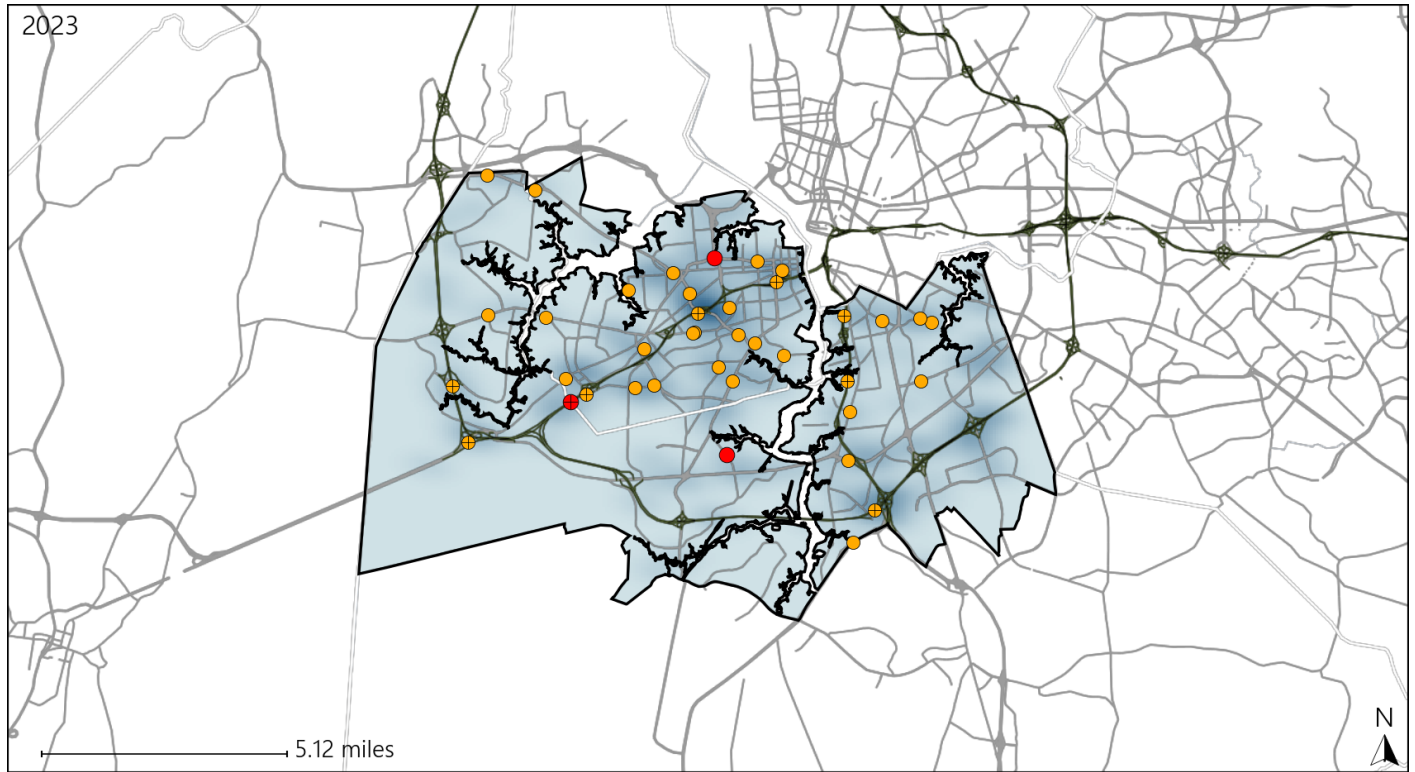


Available Crash Data - Calendar Year (CY)	CY 2020	CY 2021	CY 2022	CY 2023
Total Crashes	2761	3150	3000	3252
Fatal Crashes	11	27	20	18
Injury Crashes	1276	1330	1259	1383

# Virginia Senate District 18 Alcohol Crash Statistics

Report Generated May, 2024

	Count	Highest Time Period(s)	Highest Day(s)	Highest Month(s)
<b>Fatal Crashes</b>	<b>3</b>	<b>Midnight - 2:59am</b>	<b>Friday • Sunday</b>	<b>August</b>
<b>Resulting Fatalities</b>	<b>3</b>	(67%)	(66%)	(67%)
<b>Serious Injury Crashes</b>	<b>36</b>	<b>Midnight - 2:59am</b>	<b>Sunday</b>	<b>August • May</b>
		(33%)	(33%)	(34%)



### Senate District 18 Alcohol-Related Crashes

Interstate Crashes

Non-interstate Crashes

- Fatal
- Serious Injury

- Fatal
- Serious Injury

The blue gradient represents the density of all alcohol-related crashes.

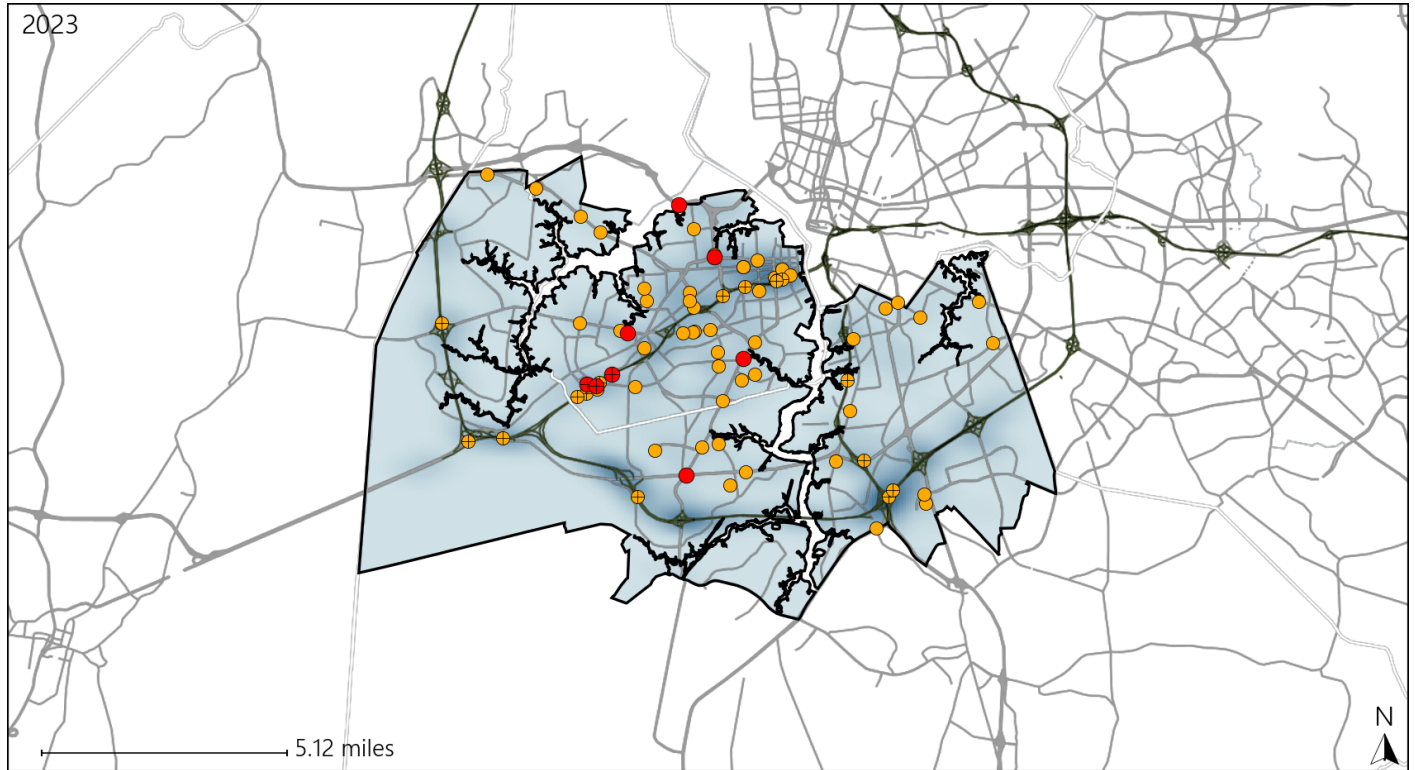


Available Crash Data - Calendar Year (CY)	CY 2020	CY 2021	CY 2022	CY 2023
<b>Total Crashes</b>	2761	3150	3000	3252
<b>Fatal Crashes</b>	11	27	20	18
<b>Injury Crashes</b>	1276	1330	1259	1383
<b>Alcohol-Related Fatal Crashes</b>	4	8	6	3
<b>Percent of Alcohol-Related Fatal Crashes to Total Fatal Crashes</b>	36%	30%	30%	17%
<b>Alcohol-Related Injury Crashes</b>	89	99	73	100
<b>Percent of Alcohol-Related Injury Crashes to Total Injury Crashes</b>	7%	7%	6%	7%

# Virginia Senate District 18 Speed Crash Statistics

Report Generated May, 2024

	Count	Highest Time Period(s)	Highest Day(s)	Highest Month(s)
<b>Fatal Crashes</b>	<b>8</b>	<b>6:00am - 8:59am</b>	<b>Friday - Thursday</b>	<b>December</b>
<b>Resulting Fatalities</b>	<b>9</b>	<b>Noon - 2:59pm</b> (50%)	<b>(50%)</b>	<b>(38%)</b>
<b>Serious Injury Crashes</b>	<b>66</b>	<b>3:00pm - 5:59pm</b> (20%)	<b>Friday</b> (23%)	<b>December</b> (14%)



### Senate District 18 Speed-Related Crashes

Interstate Crashes                      Non-interstate Crashes  
 ● Fatal                                      ● Fatal  
 ⊕ Serious Injury                          ⊕ Serious Injury

The blue gradient represents the density of all speed-related crashes.

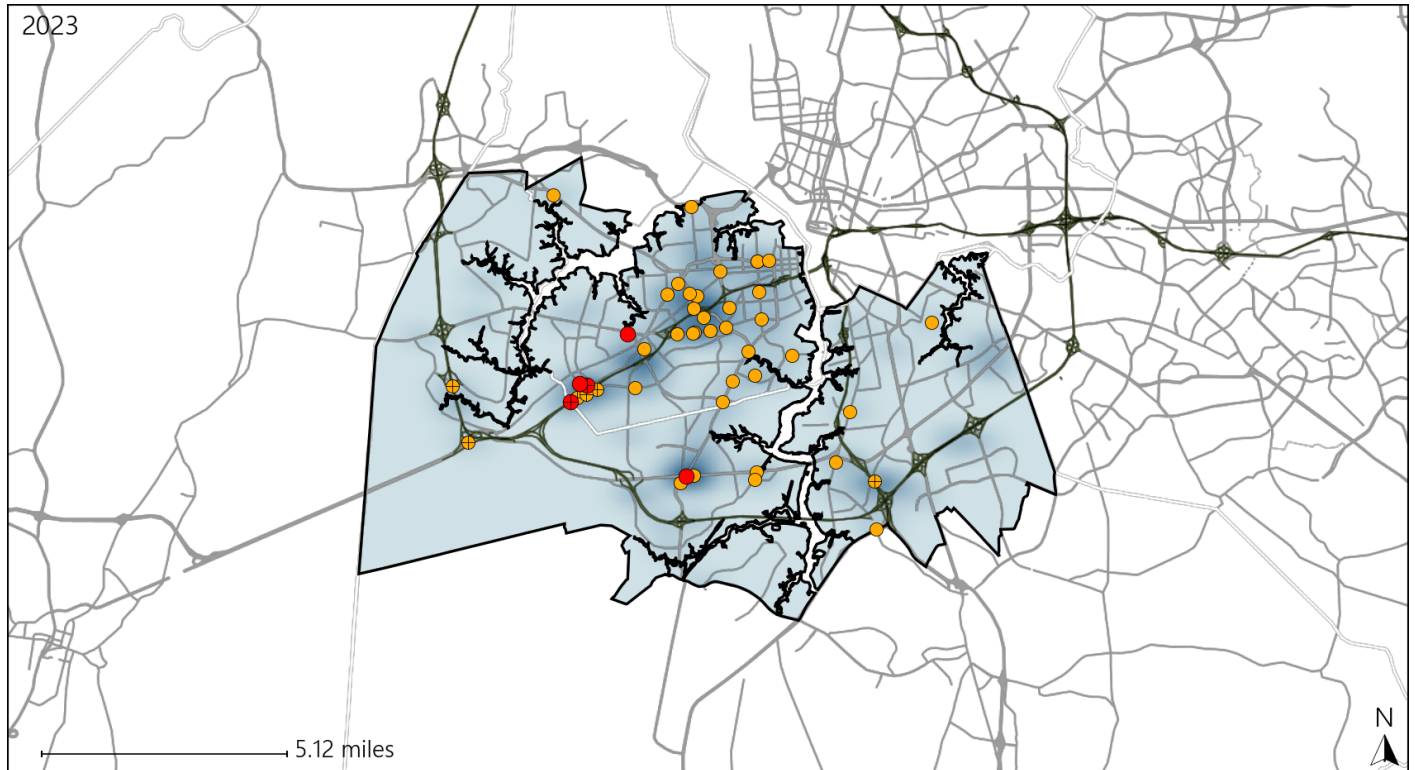


Available Crash Data - Calendar Year (CY)	CY 2020	CY 2021	CY 2022	CY 2023
Total Crashes	2761	3150	3000	3252
Fatal Crashes	11	27	20	18
Injury Crashes	1276	1330	1259	1383
Speed-Related Fatal Crashes	3	15	5	8
Percent of Speed-Related Fatal Crashes to Total Fatal Crashes	27%	56%	25%	44%
Speed-Related Injury Crashes	261	297	293	270
Percent of Speed-Related Injury Crashes to Total Injury Crashes	20%	22%	23%	20%

# Virginia Senate District 18 Unrestrained Crash Statistics

Report Generated May, 2024

	Count	Highest Time Period(s)	Highest Day(s)	Highest Month(s)
<b>Fatal Crashes</b>	<b>5</b>	<b>Noon - 2:59pm</b>	<b>Friday</b>	<b>February</b>
<b>Unrestrained Fatalities</b>	<b>5</b>	(40%)	(60%)	(40%)
<b>Serious Injury Crashes</b>	<b>42</b>	<b>9:00pm - 11:59pm</b>	<b>Saturday</b>	<b>June</b>
		(24%)	(21%)	(17%)



### Senate District 18 Unrestrained-Related Crashes

Interstate Crashes

Non-interstate Crashes

- Fatal
- Serious Injury

- Fatal
- Serious Injury

The blue gradient represents the density of all unrestrained-related crashes.

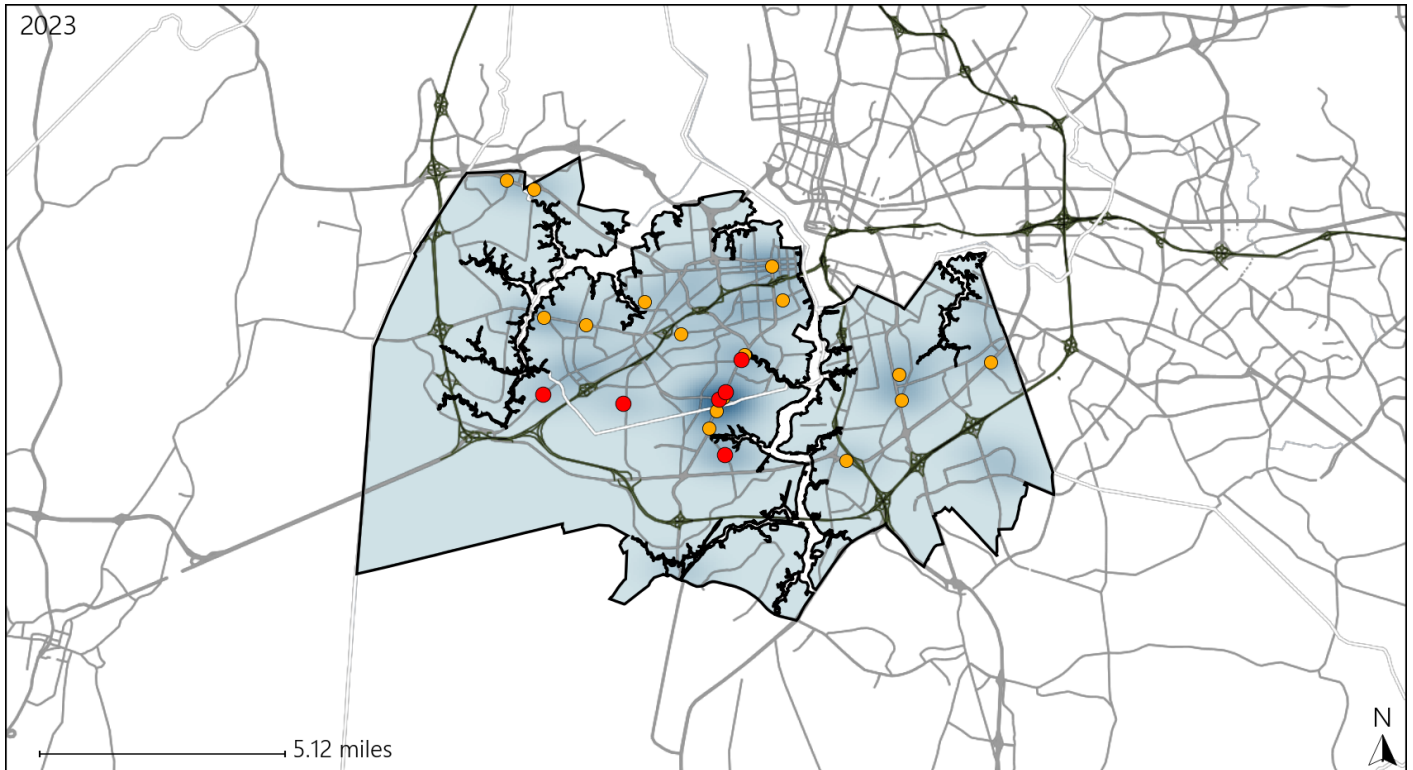


Available Crash Data - Calendar Year (CY)	CY 2020	CY 2021	CY 2022	CY 2023
<b>Total Crashes</b>	2761	3150	3000	3252
<b>Fatalities</b>	11	29	21	19
<b>Injuries</b>	1993	2083	1955	2246
<b>Unrestrained Fatalities</b>	4	9	6	5
<b>Percent of Unrestrained Fatalities to Total Fatalities</b>	36%	31%	29%	26%
<b>Unrestrained Injuries</b>	114	130	92	143
<b>Percent of Unrestrained Injuries to Total Injuries</b>	6%	6%	5%	6%

# Virginia Senate District 18 Pedestrian Crash Statistics

Report Generated May, 2024

	Count	Highest Time Period(s)	Highest Day(s)	Highest Month(s)
<b>Fatal Crashes</b>	<b>6</b>	<b>9:00pm - 11:59pm</b>	<b>Thursday • Wednesday</b>	<b>August</b>
<b>Pedestrian Fatalities</b>	<b>6</b>	(50%)	(66%)	(50%)
<b>Serious Injury Crashes</b>	<b>16</b>	<b>3:00pm - 5:59pm</b>	<b>Friday • Tuesday</b>	<b>August • February</b>
		(31%)	(38%)	(38%)



### Senate District 18 Pedestrian-Related Crashes

- |                    |                        |
|--------------------|------------------------|
| Interstate Crashes | Non-interstate Crashes |
| Fatal              | Fatal                  |
| Serious Injury     | Serious Injury         |

The blue gradient represents the density of all pedestrian-related crashes.

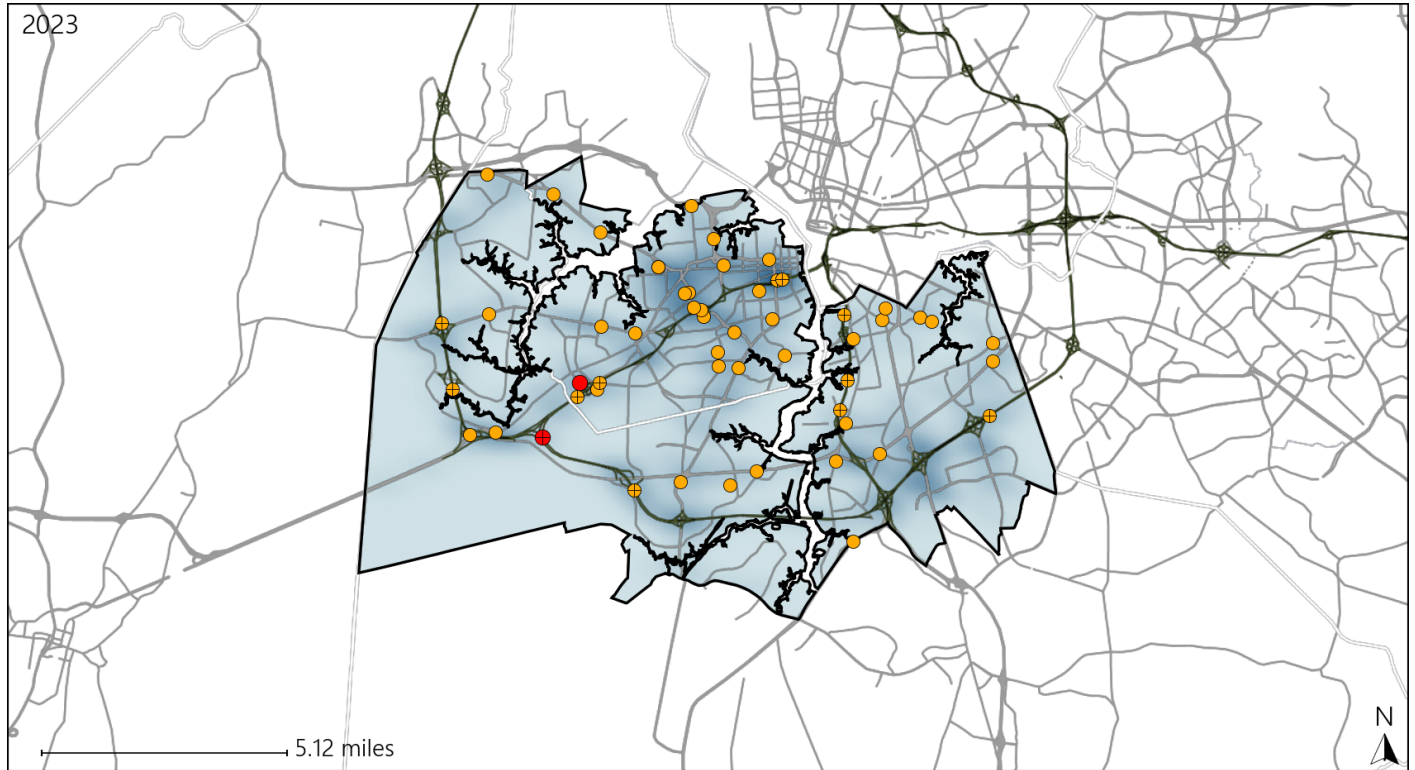


Available Crash Data - Calendar Year (CY)	CY 2020	CY 2021	CY 2022	CY 2023
Total Crashes	2761	3150	3000	3252
Fatal Crashes	11	27	20	18
Injury Crashes	1276	1330	1259	1383
Pedestrian-Related Fatal Crashes	4	2	4	6
Percent of Pedestrian-Related Fatal Crashes to Total Fatal Crashes	36%	7%	20%	33%
Pedestrian-Related Injury Crashes	44	36	36	36
Percent of Pedestrian-Related Injury Crashes to Total Injury Crashes	3%	3%	3%	3%

# Virginia Senate District 18 Distracted Driving Crash Statistics

Report Generated May, 2024

	Count	Highest Time Period(s)	Highest Day(s)	Highest Month(s)
<b>Fatal Crashes</b>	<b>2</b>	<b>9:00pm - 11:59pm</b>	<b>Friday • Tuesday</b>	<b>February • March</b>
<b>Resulting Fatalities</b>	<b>2</b>	<b>Noon - 2:59pm</b> (100%)	<b>(100%)</b>	<b>(100%)</b>
<b>Serious Injury Crashes</b>	<b>53</b>	<b>3:00pm - 5:59pm</b> (19%)	<b>Thursday</b> (23%)	<b>March</b> (17%)



## Senate District 18 Distracted Driving-Related Crashes

- |                    |                        |
|--------------------|------------------------|
| Interstate Crashes | Non-interstate Crashes |
| ● Fatal            | ● Fatal                |
| ● Serious Injury   | ● Serious Injury       |

The blue gradient represents the density of all distracted driving-related crashes.



Available Crash Data - Calendar Year (CY)	CY 2020	CY 2021	CY 2022	CY 2023
Total Crashes	2761	3150	3000	3252
Fatal Crashes	11	27	20	18
Injury Crashes	1276	1330	1259	1383
Distracted Driving-Related Fatal Crashes	4	4	0	2
Percent of Distracted Driving-Related Fatal Crashes to Total Fatal Crashes	36%	15%	0%	11%
Distracted Driving-Related Injury Crashes	231	198	184	264
Percent of Distracted Driving-Related Injury Crashes to Total Injury Crashes	18%	15%	15%	19%