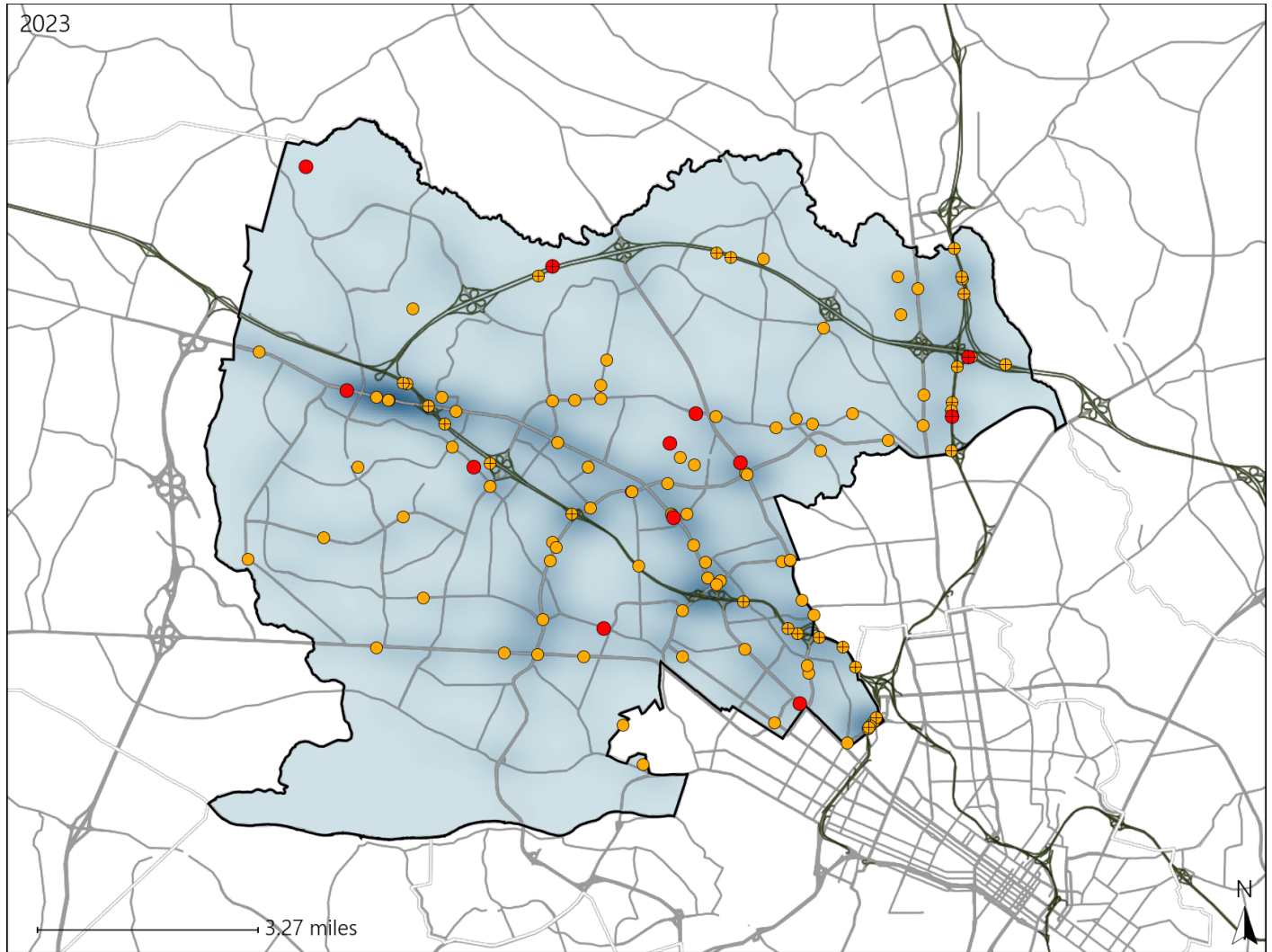


# Virginia Senate District 16 Crash Statistics

Report Generated May, 2024

	Count	Highest Time Period(s)	Highest Day(s)	Highest Month(s)
<b>Fatal Crashes</b>	<b>12</b>	9:00pm - 11:59pm	Friday • Monday	January • May
<b>Resulting Fatalities</b>	<b>12</b>	(42%)	(34%)	(34%)
<b>Serious Injury Crashes</b>	<b>106</b>	9:00pm - 11:59pm	Friday	May • September
		(23%)	(25%)	(24%)



### Senate District 16 Crashes

Interstate Crashes

- Fatal
- Serious Injury

Non-interstate Crashes

- Fatal
- Serious Injury

The blue gradient represents the density of all crashes.

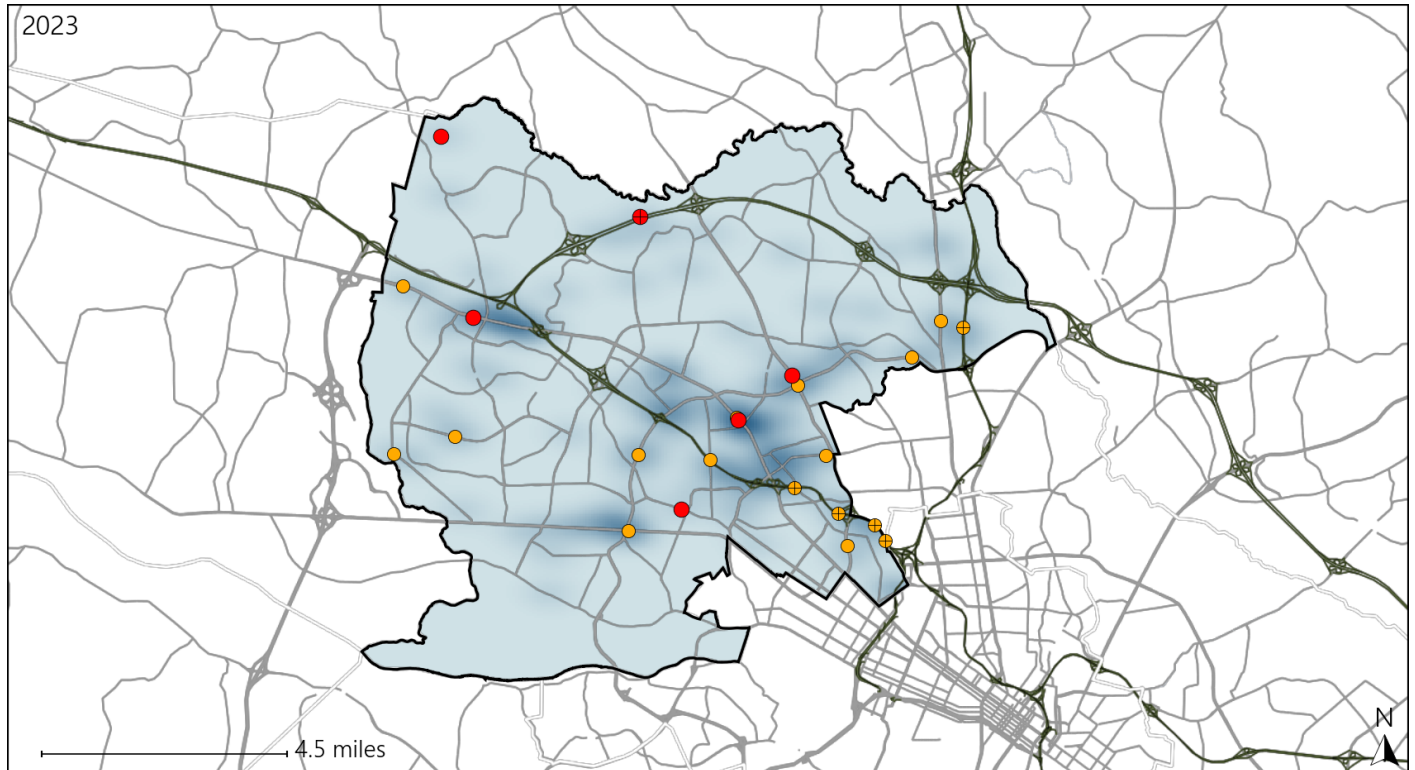


Available Crash Data - Calendar Year (CY)	CY 2020	CY 2021	CY 2022	CY 2023
Total Crashes	2681	2934	3126	3254
Fatal Crashes	13	16	8	12
Injury Crashes	676	746	811	812

# Virginia Senate District 16 Alcohol Crash Statistics

Report Generated May, 2024

	Count	Highest Time Period(s)	Highest Day(s)	Highest Month(s)
<b>Fatal Crashes</b>	<b>6</b>	<b>9:00pm - 11:59pm</b>	<b>Friday • Monday</b>	<b>January • May</b>
<b>Resulting Fatalities</b>	<b>6</b>	(50%)	(34%)	(66%)
<b>Serious Injury Crashes</b>	<b>17</b>	<b>6:00pm - 8:59pm</b>	<b>Friday</b>	<b>November</b>
		(35%)	(29%)	(24%)




### Senate District 16 Alcohol-Related Crashes


Interstate Crashes

Non-interstate Crashes

 Fatal

 Fatal

 Serious Injury

 Serious Injury

The blue gradient represents the density of all alcohol-related crashes.

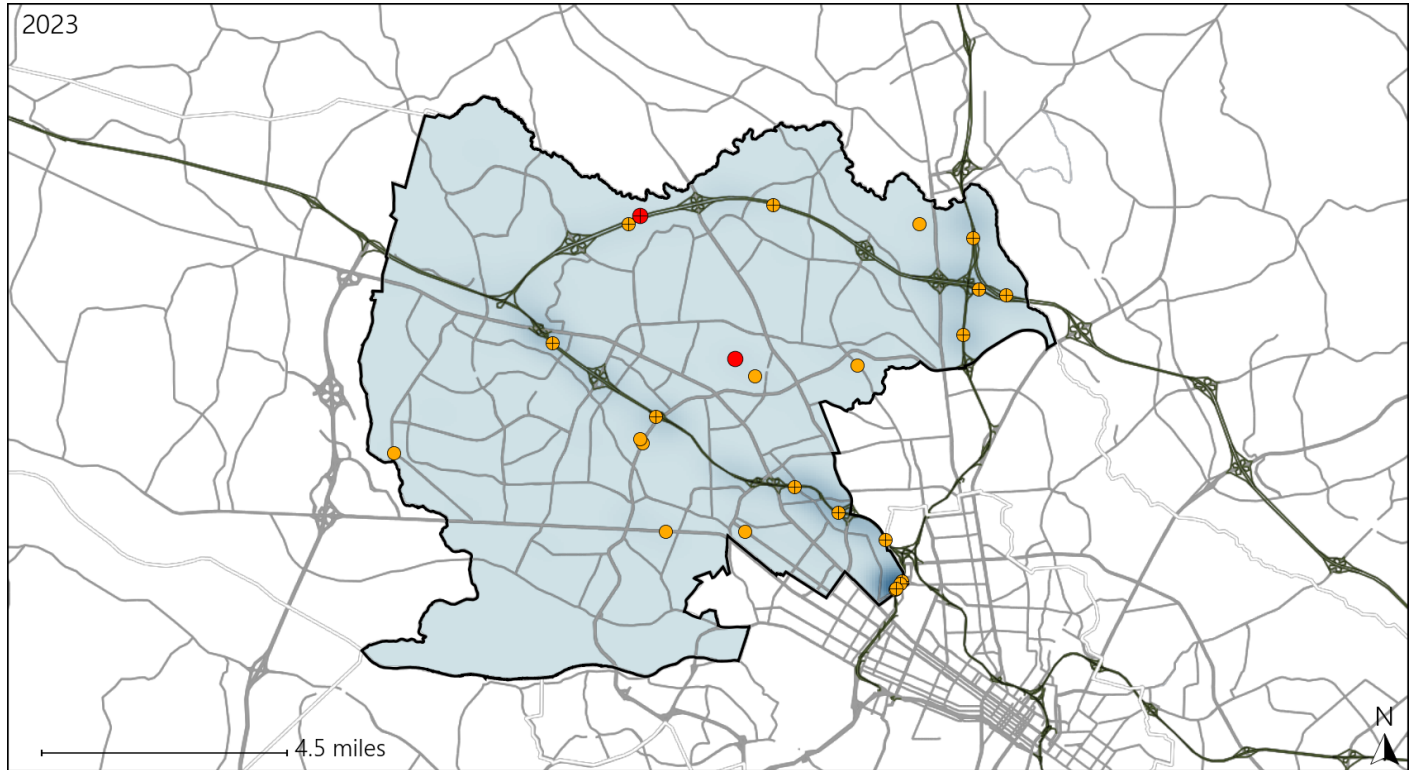


Available Crash Data - Calendar Year (CY)	CY 2020	CY 2021	CY 2022	CY 2023
Total Crashes	2681	2934	3126	3254
Fatal Crashes	13	16	8	12
Injury Crashes	676	746	811	812
Alcohol-Related Fatal Crashes	2	5	2	6
Percent of Alcohol-Related Fatal Crashes to Total Fatal Crashes	15%	31%	25%	50%
Alcohol-Related Injury Crashes	36	43	49	49
Percent of Alcohol-Related Injury Crashes to Total Injury Crashes	5%	6%	6%	6%

# Virginia Senate District 16 Speed Crash Statistics

Report Generated May, 2024

	Count	Highest Time Period(s)	Highest Day(s)	Highest Month(s)
<b>Fatal Crashes</b>	<b>2</b>	3:00pm - 5:59pm	Tuesday • Wednesday	October • September
<b>Resulting Fatalities</b>	<b>2</b>	9:00pm - 11:59pm (100%)	(100%)	(100%)
<b>Serious Injury Crashes</b>	<b>23</b>	9:00am - 11:59am (22%)	Sunday (26%)	May • November (44%)



### Senate District 16 Speed-Related Crashes

Interstate Crashes                      Non-interstate Crashes  
 ● Fatal                                      ● Fatal  
 ● Serious Injury                          ● Serious Injury

The blue gradient represents the density of all speed-related crashes.

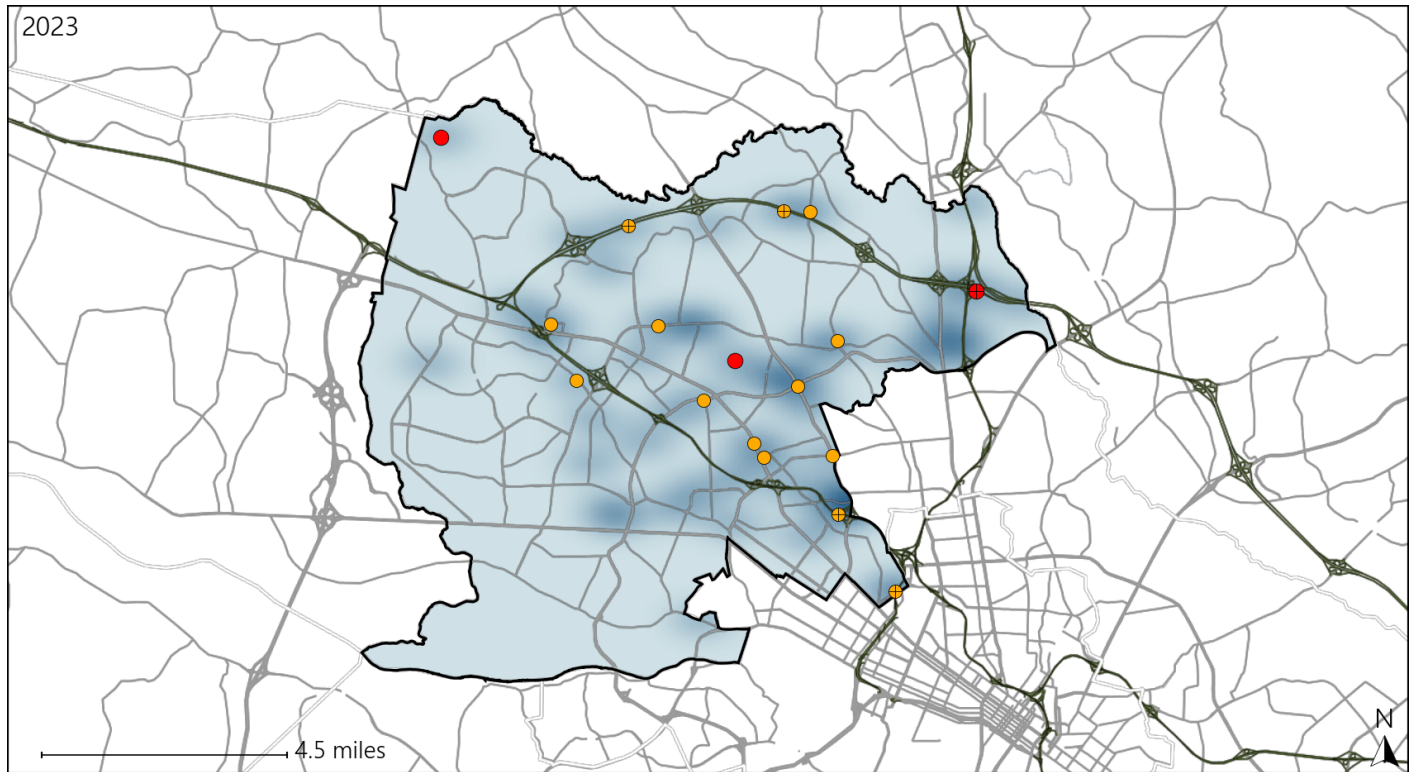


Available Crash Data - Calendar Year (CY)	CY 2020	CY 2021	CY 2022	CY 2023
Total Crashes	2681	2934	3126	3254
Fatal Crashes	13	16	8	12
Injury Crashes	676	746	811	812
Speed-Related Fatal Crashes	2	4	2	2
Percent of Speed-Related Fatal Crashes to Total Fatal Crashes	15%	25%	25%	17%
Speed-Related Injury Crashes	65	74	72	90
Percent of Speed-Related Injury Crashes to Total Injury Crashes	10%	10%	9%	11%

# Virginia Senate District 16 Unrestrained Crash Statistics

Report Generated May, 2024

	Count	Highest Time Period(s)	Highest Day(s)	Highest Month(s)
<b>Fatal Crashes</b>	<b>3</b>	<b>3:00pm - 5:59pm</b>	<b>Friday • Monday</b>	<b>May • October</b>
<b>Unrestrained Fatalities</b>	<b>3</b>	(67%)	(66%)	(66%)
<b>Serious Injury Crashes</b>	<b>14</b>	<b>9:00pm - 11:59pm</b> <b>Midnight - 2:59am</b>	<b>Friday • Monday</b>	<b>April • December</b>
		(42%)	(42%)	(28%)



### Senate District 16 Unrestrained-Related Crashes

- |                    |                        |
|--------------------|------------------------|
| Interstate Crashes | Non-interstate Crashes |
| ● Fatal            | ● Fatal                |
| ⊕ Serious Injury   | ⊕ Serious Injury       |

The blue gradient represents the density of all unrestrained-related crashes.

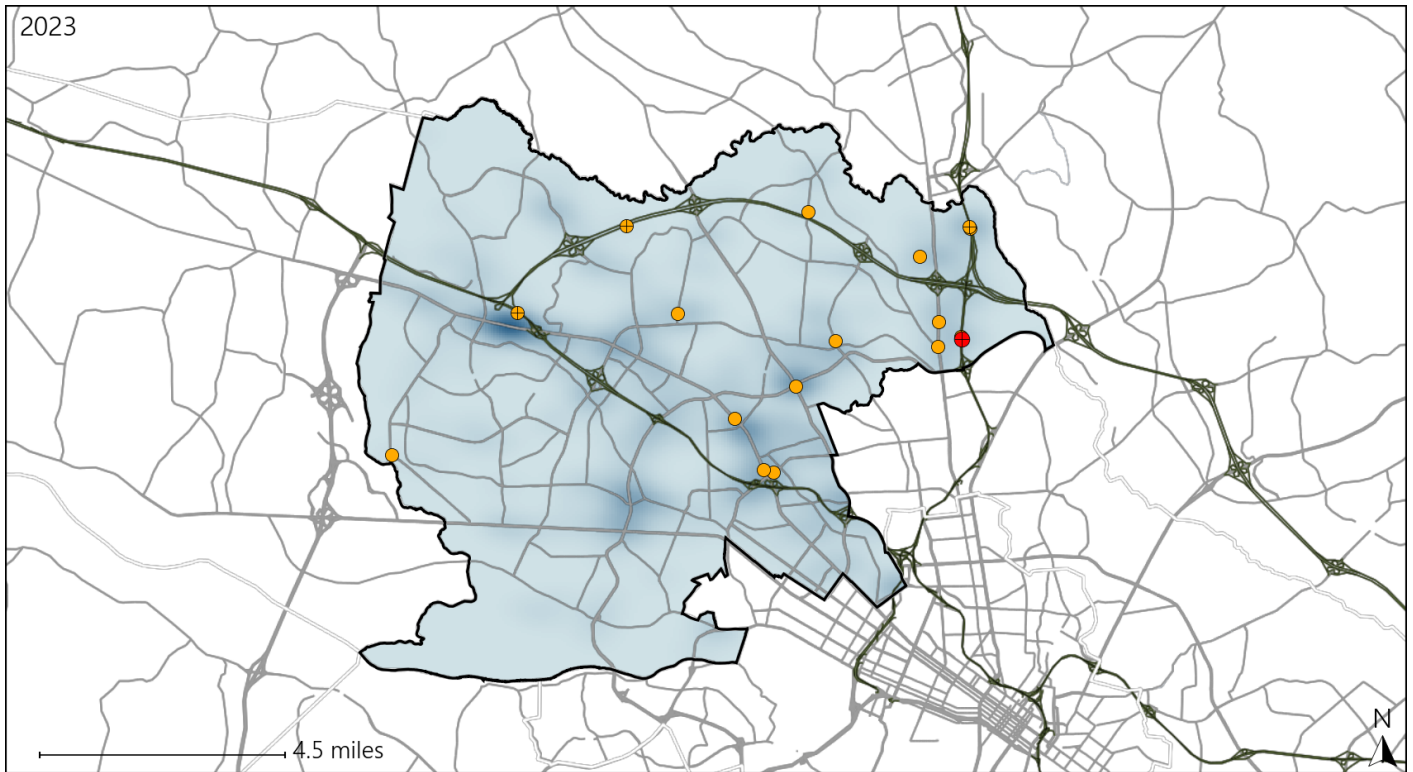


Available Crash Data - Calendar Year (CY)	CY 2020	CY 2021	CY 2022	CY 2023
Total Crashes	2681	2934	3126	3254
Fatalities	13	16	8	12
Injuries	1159	1271	1417	1411
Unrestrained Fatalities	0	3	2	3
Percent of Unrestrained Fatalities to Total Fatalities	0%	19%	25%	25%
Unrestrained Injuries	39	56	50	59
Percent of Unrestrained Injuries to Total Injuries	3%	4%	4%	4%

# Virginia Senate District 16 Distracted Driving Crash Statistics

Report Generated May, 2024

	Count	Highest Time Period(s)	Highest Day(s)	Highest Month(s)
<b>Fatal Crashes</b>	<b>1</b>	<b>3:00am - 5:59am</b>	<b>Thursday</b>	<b>August</b>
<b>Resulting Fatalities</b>	<b>1</b>	(100%)	(100%)	(100%)
<b>Serious Injury Crashes</b>	<b>16</b>	<b>9:00pm - 11:59pm</b> <b>Midnight - 2:59am</b>	<b>Friday • Saturday</b>	<b>May • October</b>
		(50%)	(38%)	(38%)



### Senate District 16 Distracted Driving-Related Crashes

- |                    |                        |
|--------------------|------------------------|
| Interstate Crashes | Non-interstate Crashes |
| Fatal              | Fatal                  |
| Serious Injury     | Serious Injury         |

The blue gradient represents the density of all distracted driving-related crashes.



Available Crash Data - Calendar Year (CY)	CY 2020	CY 2021	CY 2022	CY 2023
Total Crashes	2681	2934	3126	3254
Fatal Crashes	13	16	8	12
Injury Crashes	676	746	811	812
Distracted Driving-Related Fatal Crashes	1	2	1	1
Percent of Distracted Driving-Related Fatal Crashes to Total Fatal Crashes	8%	13%	13%	8%
Distracted Driving-Related Injury Crashes	141	122	121	103
Percent of Distracted Driving-Related Injury Crashes to Total Injury Crashes	21%	16%	15%	13%