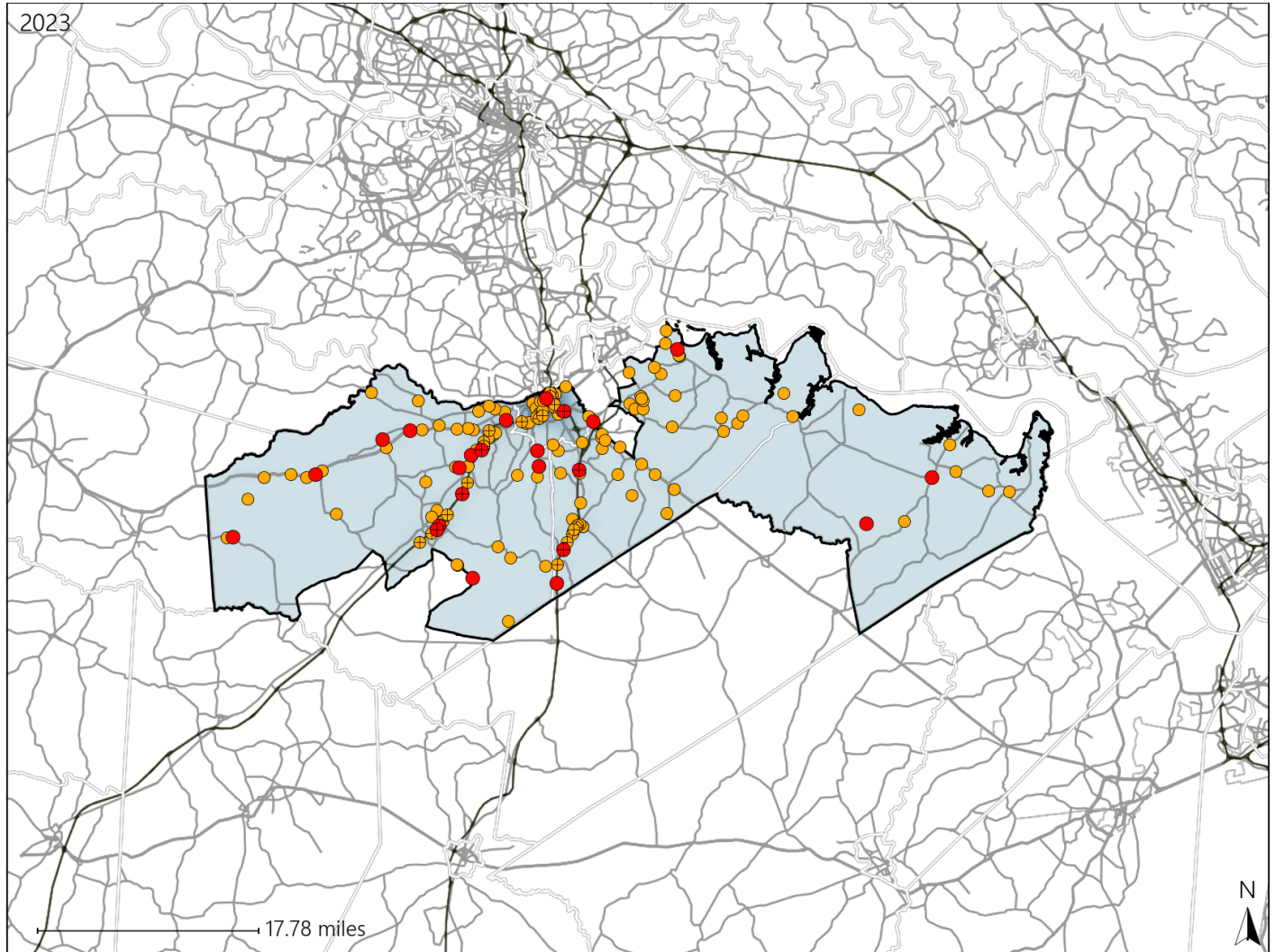


Virginia House District 82 Crash Statistics

Report Generated May, 2024

	Count	Highest Time Period(s)	Highest Day(s)	Highest Month(s)
Fatal Crashes	23	6:00pm - 8:59pm	Sunday • Wednesday	May
Resulting Fatalities	24	Midnight - 2:59am (34%)	(44%)	(22%)
Serious Injury Crashes	144	3:00pm - 5:59pm (21%)	Sunday (20%)	July (12%)



House District 82 Crashes

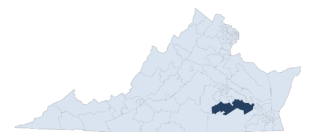
Interstate Crashes

- Fatal
- Serious Injury

Non-interstate Crashes

- Fatal
- Serious Injury

The blue gradient represents the density of all crashes.

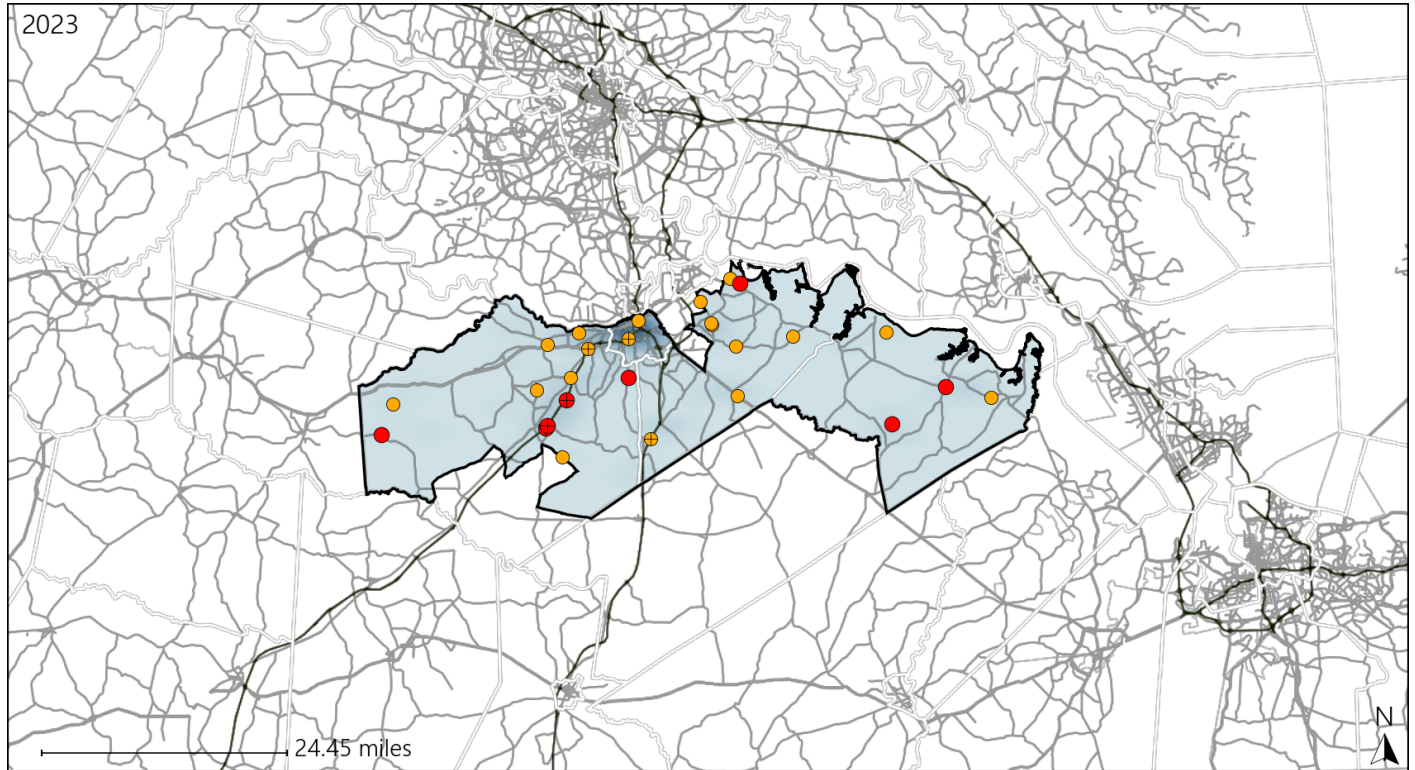


Available Crash Data - Calendar Year (CY)	CY 2020	CY 2021	CY 2022	CY 2023
Total Crashes	1521	1698	1814	1844
Fatal Crashes	17	23	15	23
Injury Crashes	592	533	579	611

Virginia House District 82 Alcohol Crash Statistics

Report Generated May, 2024

	Count	Highest Time Period(s)	Highest Day(s)	Highest Month(s)
Fatal Crashes	8	3:00am - 5:59am	Sunday	May
Resulting Fatalities	9	9:00pm - 11:59pm (50%)	(50%)	(50%)
Serious Injury Crashes	20	9:00pm - 11:59pm (35%)	Sunday (35%)	February (25%)



House District 82 Alcohol-Related Crashes

Interstate Crashes

Non-interstate Crashes

- Fatal
- Serious Injury

- Fatal
- Serious Injury

The blue gradient represents the density of all alcohol-related crashes.

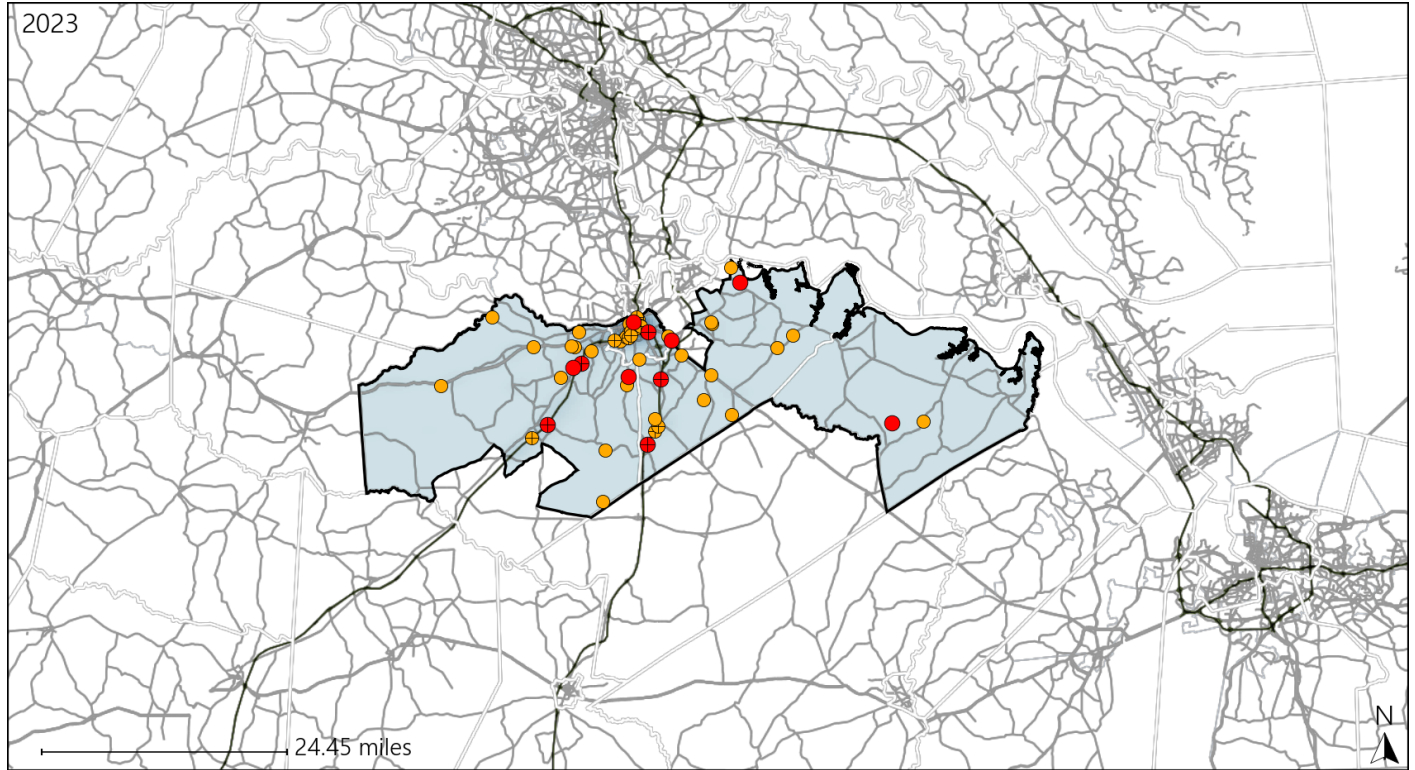


Available Crash Data - Calendar Year (CY)	CY 2020	CY 2021	CY 2022	CY 2023
Total Crashes	1521	1698	1814	1844
Fatal Crashes	17	23	15	23
Injury Crashes	592	533	579	611
Alcohol-Related Fatal Crashes	5	7	5	8
Percent of Alcohol-Related Fatal Crashes to Total Fatal Crashes	29%	30%	33%	35%
Alcohol-Related Injury Crashes	52	45	40	51
Percent of Alcohol-Related Injury Crashes to Total Injury Crashes	9%	8%	7%	8%

Virginia House District 82 Speed Crash Statistics

Report Generated May, 2024

	Count	Highest Time Period(s)	Highest Day(s)	Highest Month(s)
Fatal Crashes	11	9:00pm - 11:59pm	Sunday	March
Resulting Fatalities	12	(27%)	(36%)	(27%)
Serious Injury Crashes	45	9:00pm - 11:59pm	Friday	August
		(20%)	(24%)	(16%)



House District 82 Speed-Related Crashes

Interstate Crashes Non-interstate Crashes
 ● Fatal ● Fatal
 ⊕ Serious Injury ⊕ Serious Injury

The blue gradient represents the density of all speed-related crashes.

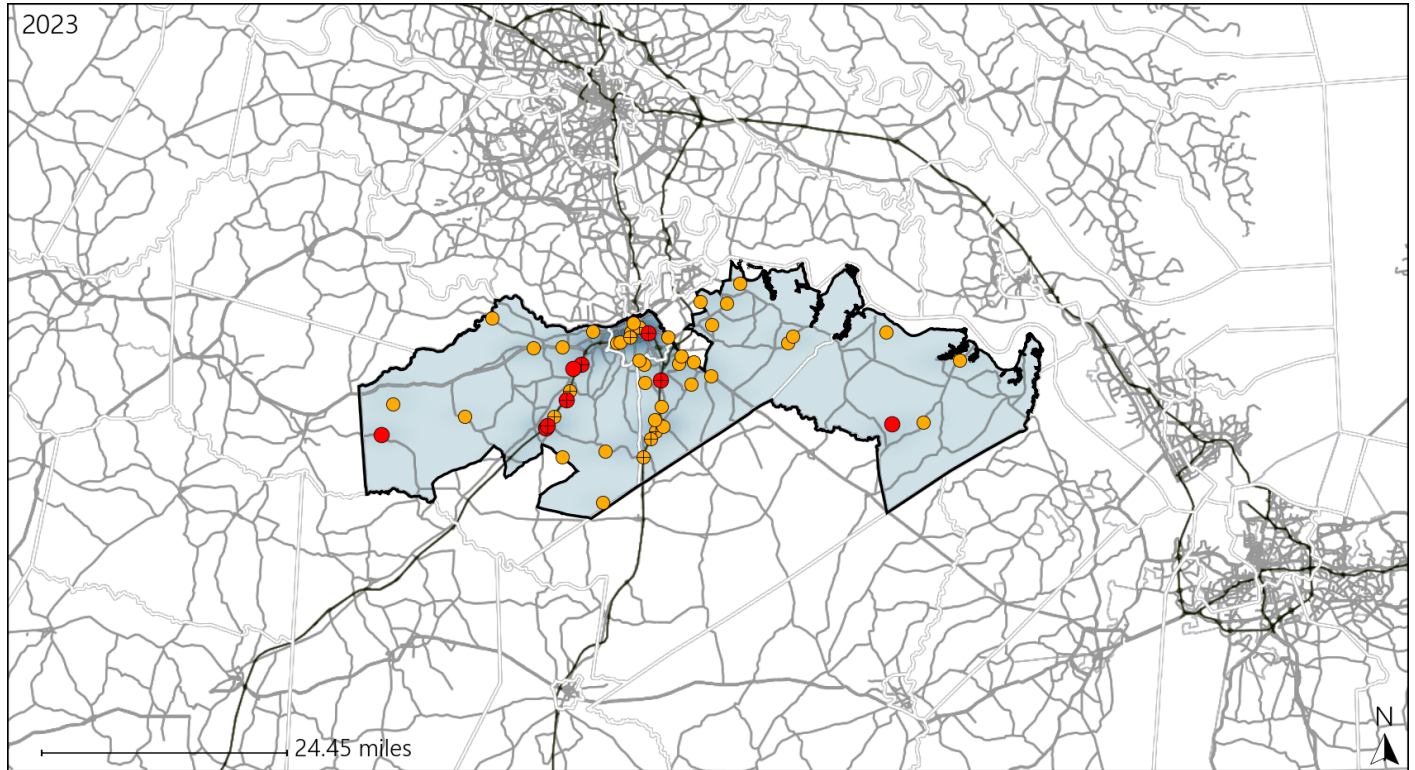


Available Crash Data - Calendar Year (CY)	CY 2020	CY 2021	CY 2022	CY 2023
Total Crashes	1521	1698	1814	1844
Fatal Crashes	17	23	15	23
Injury Crashes	592	533	579	611
Speed-Related Fatal Crashes	8	9	5	11
Percent of Speed-Related Fatal Crashes to Total Fatal Crashes	47%	39%	33%	48%
Speed-Related Injury Crashes	154	151	132	137
Percent of Speed-Related Injury Crashes to Total Injury Crashes	26%	28%	23%	22%

Virginia House District 82 Unrestrained Crash Statistics

Report Generated May, 2024

	Count	Highest Time Period(s)	Highest Day(s)	Highest Month(s)
Fatal Crashes	9	3:00am - 5:59am	Sunday	June • March
Unrestrained Fatalities	9	3:00pm - 5:59pm (44%)	(33%)	(44%)
Serious Injury Crashes	42	3:00pm - 5:59pm (21%)	Friday • Saturday (38%)	January (14%)



House District 82 Unrestrained-Related Crashes

Interstate Crashes

Non-interstate Crashes

- Fatal
- Serious Injury

- Fatal
- Serious Injury

The blue gradient represents the density of all unrestrained-related crashes.

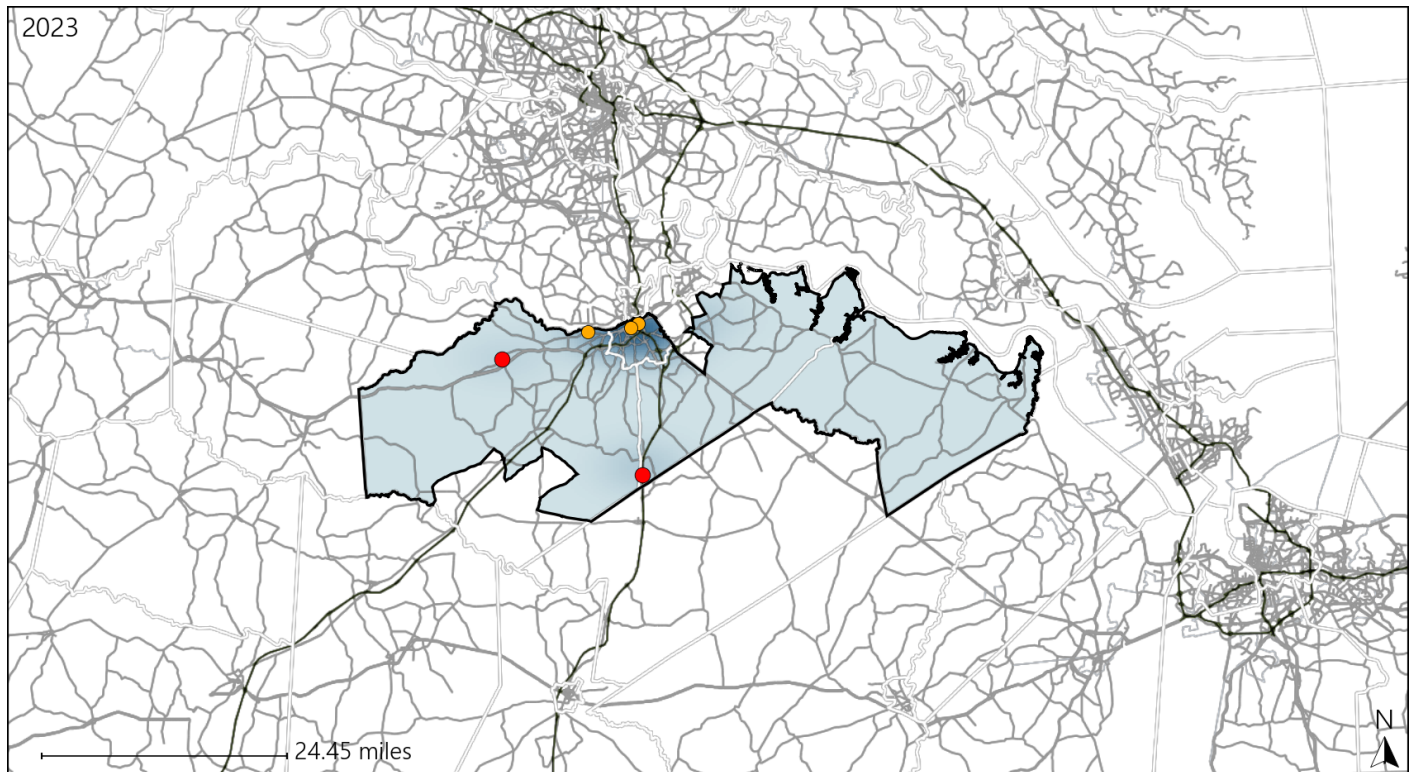


Available Crash Data - Calendar Year (CY)	CY 2020	CY 2021	CY 2022	CY 2023
Total Crashes	1521	1698	1814	1844
Fatalities	19	25	16	24
Injuries	860	829	926	969
Unrestrained Fatalities	10	12	6	9
Percent of Unrestrained Fatalities to Total Fatalities	53%	48%	38%	38%
Unrestrained Injuries	112	108	96	127
Percent of Unrestrained Injuries to Total Injuries	13%	13%	10%	13%

Virginia House District 82 Pedestrian Crash Statistics

Report Generated May, 2024

	Count	Highest Time Period(s)	Highest Day(s)	Highest Month(s)
Fatal Crashes	2	3:00am - 5:59am	Tuesday • Wednesday	February • January
Pedestrian Fatalities	2	Midnight - 2:59am (100%)	(100%)	(100%)
Serious Injury Crashes	3	6:00pm - 8:59pm 9:00pm - 11:59pm (66%)	Saturday • Sunday (66%)	January • July (66%)



House District 82 Pedestrian-Related Crashes

Interstate Crashes

- Fatal
- Serious Injury

Non-interstate Crashes

- Fatal
- Serious Injury

The blue gradient represents the density of all pedestrian-related crashes.

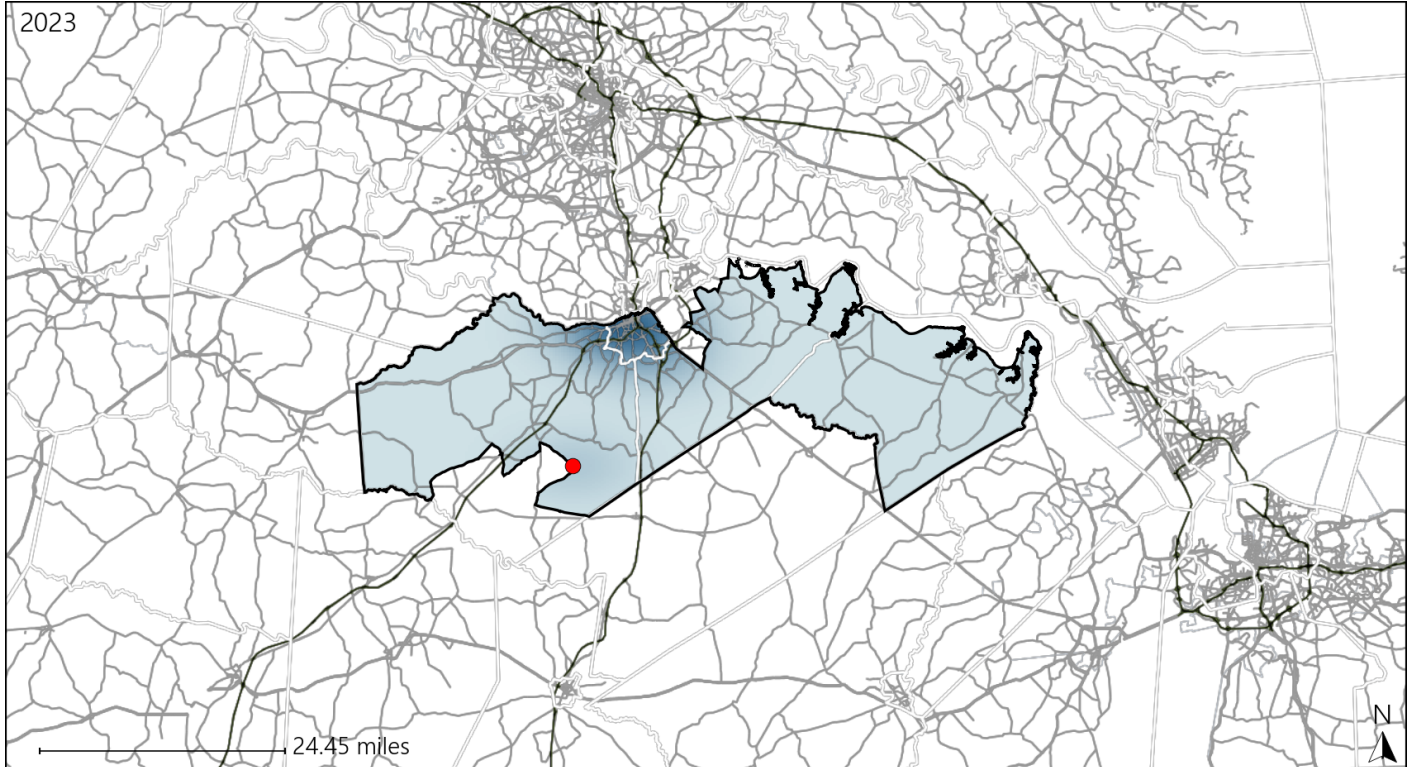


Available Crash Data - Calendar Year (CY)	CY 2020	CY 2021	CY 2022	CY 2023
Total Crashes	1521	1698	1814	1844
Fatal Crashes	17	23	15	23
Injury Crashes	592	533	579	611
Pedestrian-Related Fatal Crashes	0	1	1	2
Percent of Pedestrian-Related Fatal Crashes to Total Fatal Crashes	0%	4%	7%	9%
Pedestrian-Related Injury Crashes	20	22	17	14
Percent of Pedestrian-Related Injury Crashes to Total Injury Crashes	3%	4%	3%	2%

Virginia House District 82 Bicycle Crash Statistics

Report Generated May, 2024

	Count	Highest Time Period(s)	Highest Day(s)	Highest Month(s)
Fatal Crashes	1	6:00pm - 8:59pm	Thursday	February
Bicycle Fatalities	1	(100%)	(100%)	(100%)
Serious Injury Crashes	0	-	-	-




House District 82 Bicycle-Related Crashes


Interstate Crashes

Non-interstate Crashes

 Fatal

 Fatal

 Serious Injury

 Serious Injury

The blue gradient represents the density of all bicycle-related crashes.

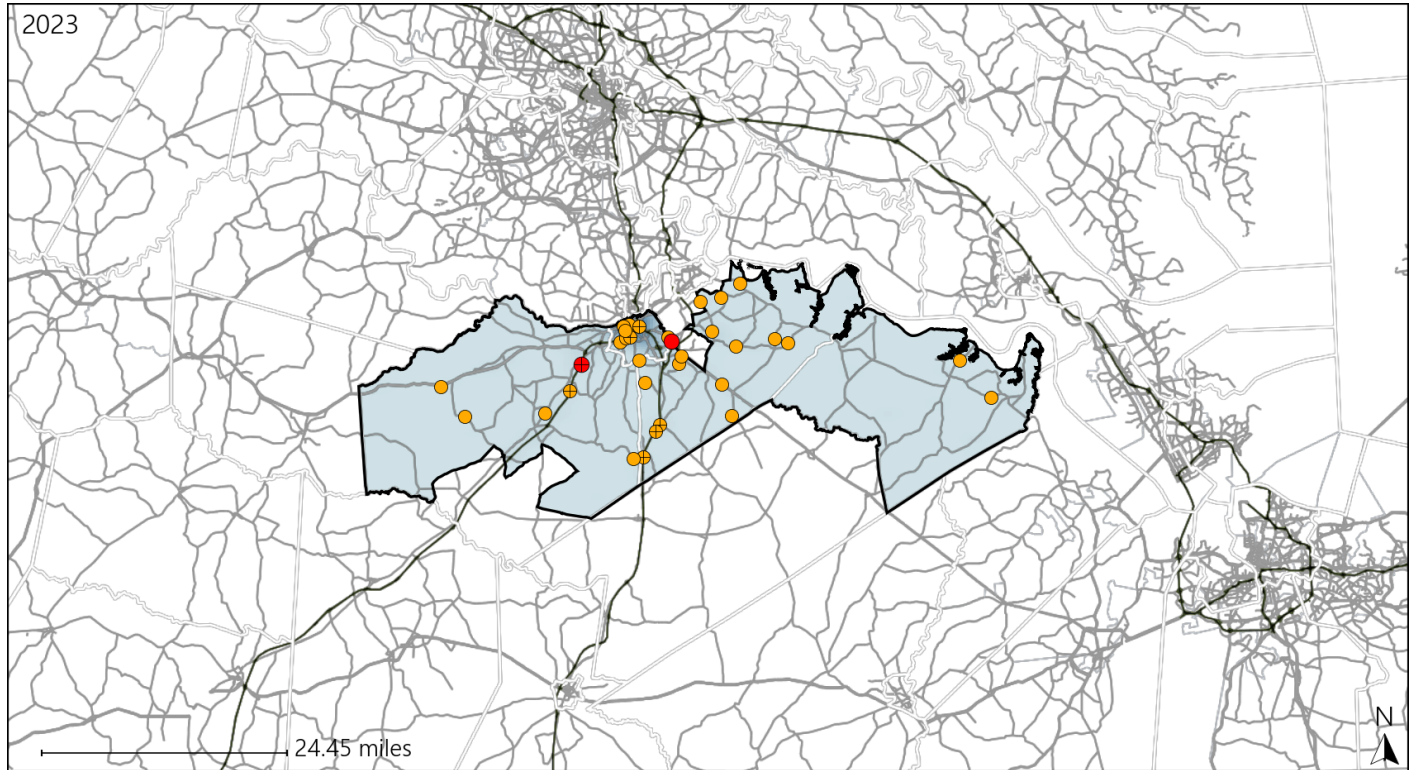


Available Crash Data - Calendar Year (CY)	CY 2020	CY 2021	CY 2022	CY 2023
Total Crashes	1521	1698	1814	1844
Fatal Crashes	17	23	15	23
Injury Crashes	592	533	579	611
Bicycle-Related Fatal Crashes	0	0	1	1
Percent of Bicycle-Related Fatal Crashes to Total Fatal Crashes	0%	0%	7%	4%
Bicycle-Related Injury Crashes	0	1	2	4
Percent of Bicycle-Related Injury Crashes to Total Injury Crashes	0%	0%	0%	1%

Virginia House District 82 Distracted Driving Crash Statistics

Report Generated May, 2024

	Count	Highest Time Period(s)	Highest Day(s)	Highest Month(s)
Fatal Crashes	2	6:00pm - 8:59pm	Friday • Wednesday	March • October
Resulting Fatalities	2	9:00am - 11:59am (100%)	(100%)	(100%)
Serious Injury Crashes	33	3:00pm - 5:59pm (21%)	Friday (21%)	March (18%)




House District 82 Distracted Driving-Related Crashes


Interstate Crashes

Non-interstate Crashes

 Fatal

 Fatal

 Serious Injury

 Serious Injury

The blue gradient represents the density of all distracted driving-related crashes.



Available Crash Data - Calendar Year (CY)	CY 2020	CY 2021	CY 2022	CY 2023
Total Crashes	1521	1698	1814	1844
Fatal Crashes	17	23	15	23
Injury Crashes	592	533	579	611
Distracted Driving-Related Fatal Crashes	2	0	2	2
Percent of Distracted Driving-Related Fatal Crashes to Total Fatal Crashes	12%	0%	13%	9%
Distracted Driving-Related Injury Crashes	108	108	99	138
Percent of Distracted Driving-Related Injury Crashes to Total Injury Crashes	18%	20%	17%	23%