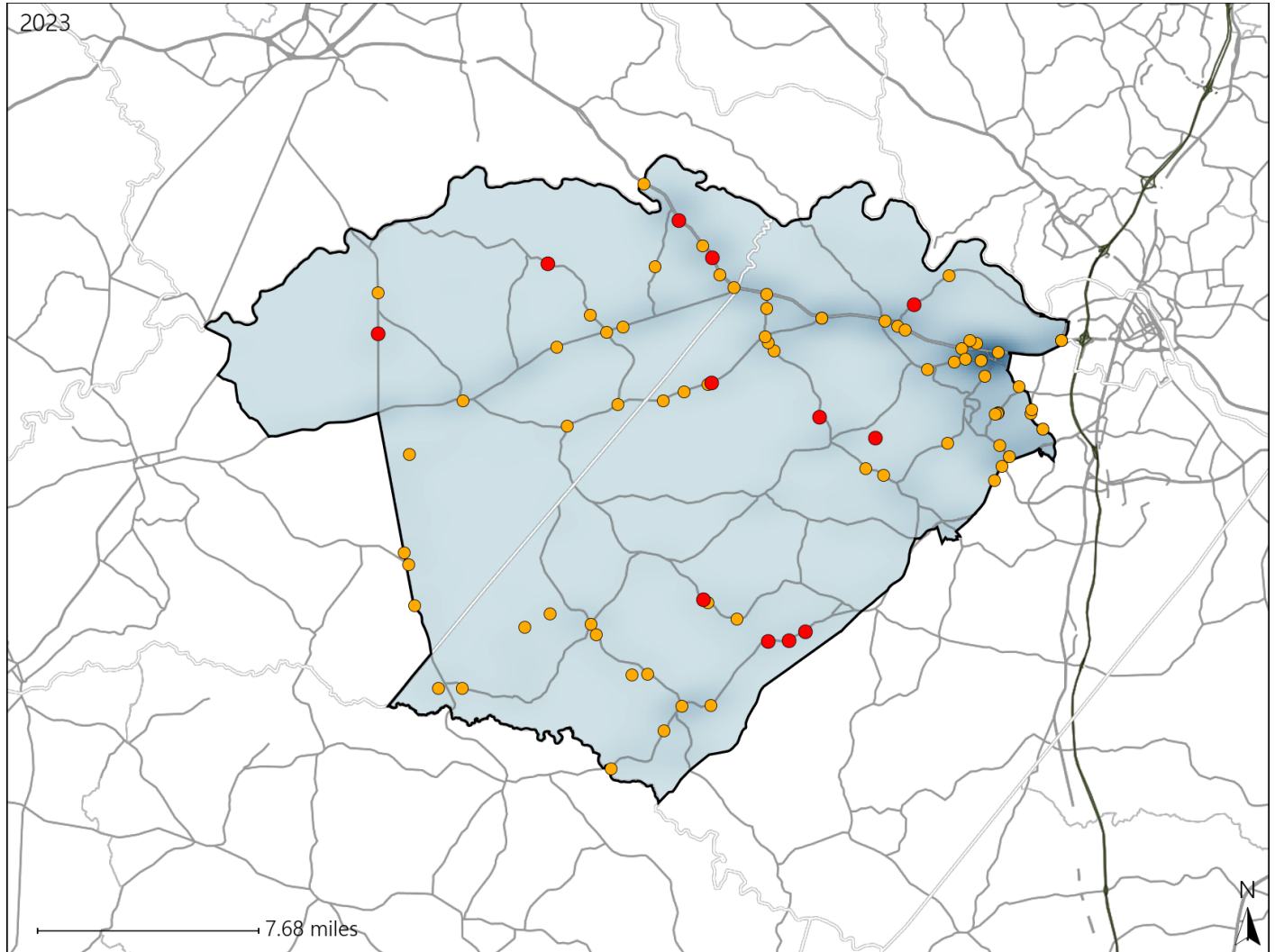


# Virginia House District 63 Crash Statistics

Report Generated May, 2024

	Count	Highest Time Period(s)	Highest Day(s)	Highest Month(s)
<b>Fatal Crashes</b>	<b>12</b>	<b>6:00am - 8:59am</b>	<b>Saturday * Thursday</b>	<b>January</b>
<b>Resulting Fatalities</b>	<b>13</b>	<b>Noon - 2:59pm</b> (50%)	<b>(50%)</b>	<b>(25%)</b>
<b>Serious Injury Crashes</b>	<b>72</b>	<b>3:00pm - 5:59pm</b> (19%)	<b>Thursday</b> (24%)	<b>August</b> (18%)



## House District 63 Crashes

Interstate Crashes

- Fatal
- Serious Injury

Non-interstate Crashes

- Fatal
- Serious Injury

The blue gradient represents the density of all crashes.

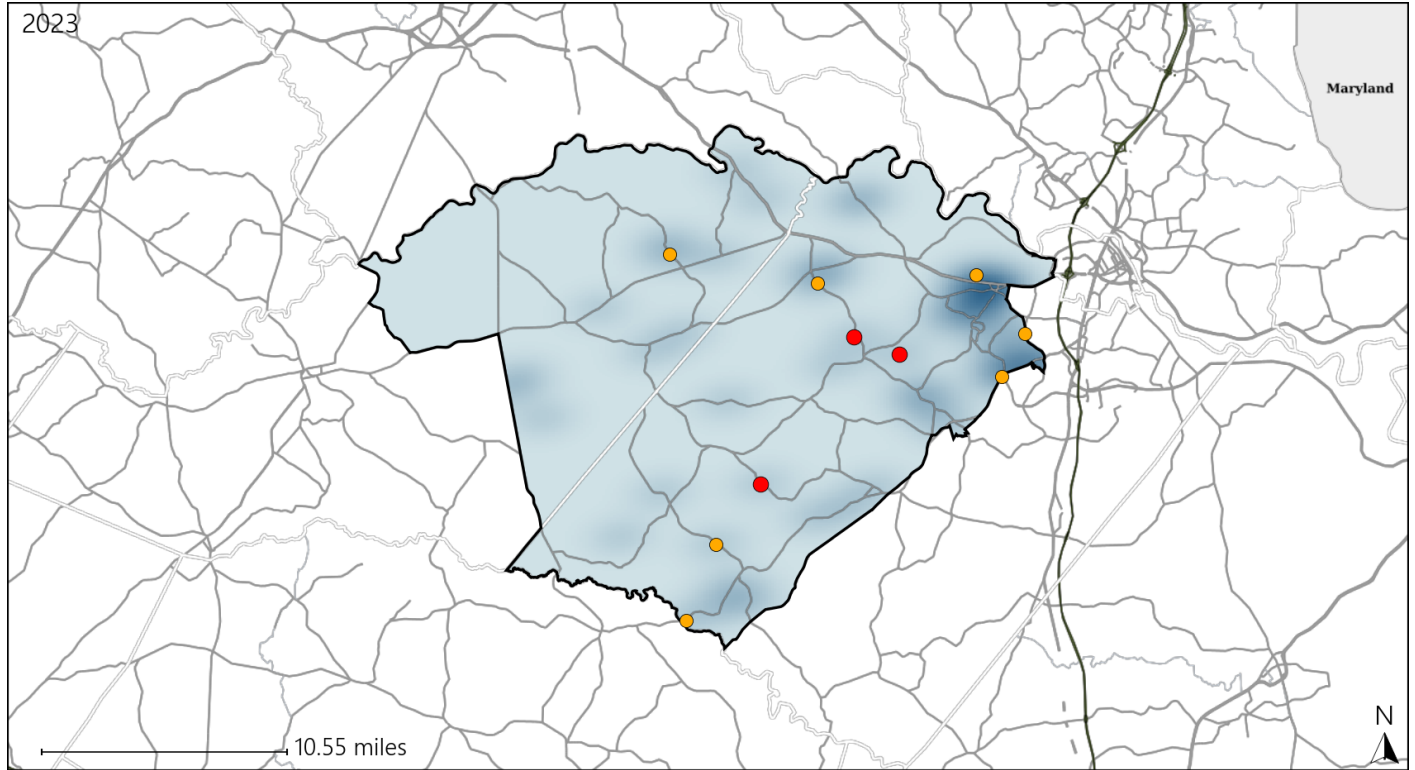


Available Crash Data - Calendar Year (CY)	CY 2020	CY 2021	CY 2022	CY 2023
Total Crashes	751	818	839	867
Fatal Crashes	11	8	9	12
Injury Crashes	199	212	210	240

# Virginia House District 63 Alcohol Crash Statistics

Report Generated May, 2024

	Count	Highest Time Period(s)	Highest Day(s)	Highest Month(s)
<b>Fatal Crashes</b>	<b>3</b>	<b>6:00pm - 8:59pm</b>	<b>Friday • Monday</b>	<b>September</b>
<b>Resulting Fatalities</b>	<b>3</b>	(67%)	(66%)	(67%)
<b>Serious Injury Crashes</b>	<b>7</b>	<b>9:00pm - 11:59pm</b>	<b>Wednesday</b>	<b>August</b>
		(43%)	(43%)	(29%)



## House District 63 Alcohol-Related Crashes

Interstate Crashes                      Non-interstate Crashes  
 ● Fatal                                      ● Fatal  
 ● Serious Injury                              ● Serious Injury

The blue gradient represents the density of all alcohol-related crashes.

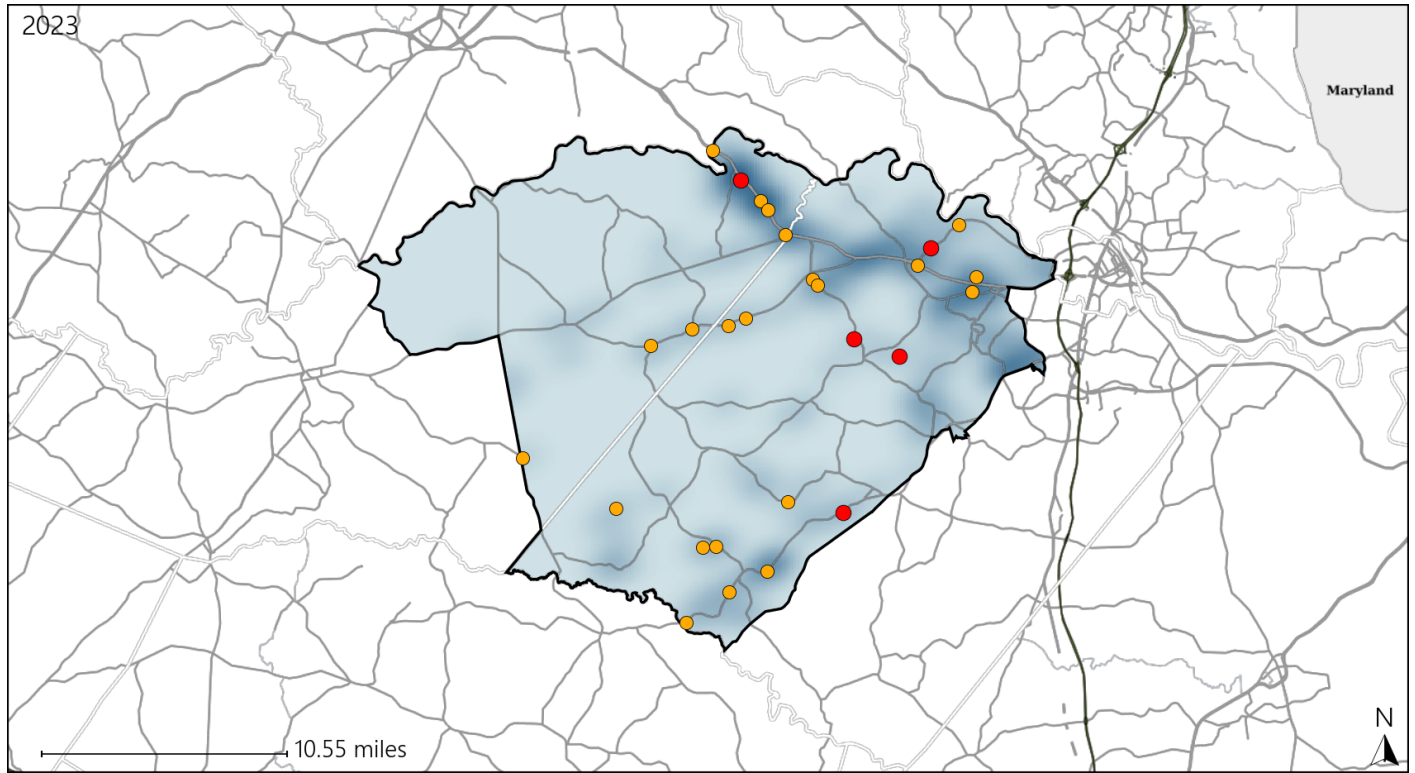


Available Crash Data - Calendar Year (CY)	CY 2020	CY 2021	CY 2022	CY 2023
Total Crashes	751	818	839	867
Fatal Crashes	11	8	9	12
Injury Crashes	199	212	210	240
Alcohol-Related Fatal Crashes	1	3	2	3
Percent of Alcohol-Related Fatal Crashes to Total Fatal Crashes	9%	38%	22%	25%
Alcohol-Related Injury Crashes	12	19	21	20
Percent of Alcohol-Related Injury Crashes to Total Injury Crashes	6%	9%	10%	8%

# Virginia House District 63 Speed Crash Statistics

Report Generated May, 2024

	Count	Highest Time Period(s)	Highest Day(s)	Highest Month(s)
<b>Fatal Crashes</b>	<b>5</b>	6:00am - 8:59am	Friday • Monday	September
<b>Resulting Fatalities</b>	<b>6</b>	6:00pm - 8:59pm (40%)	(40%)	(40%)
<b>Serious Injury Crashes</b>	<b>22</b>	3:00pm - 5:59pm 9:00pm - 11:59pm (46%)	Wednesday (23%)	August • October (46%)



### House District 63 Speed-Related Crashes

Interstate Crashes                      Non-interstate Crashes  
 ● Fatal                                      ● Fatal  
 ⊕ Serious Injury                          ⊕ Serious Injury

The blue gradient represents the density of all speed-related crashes.

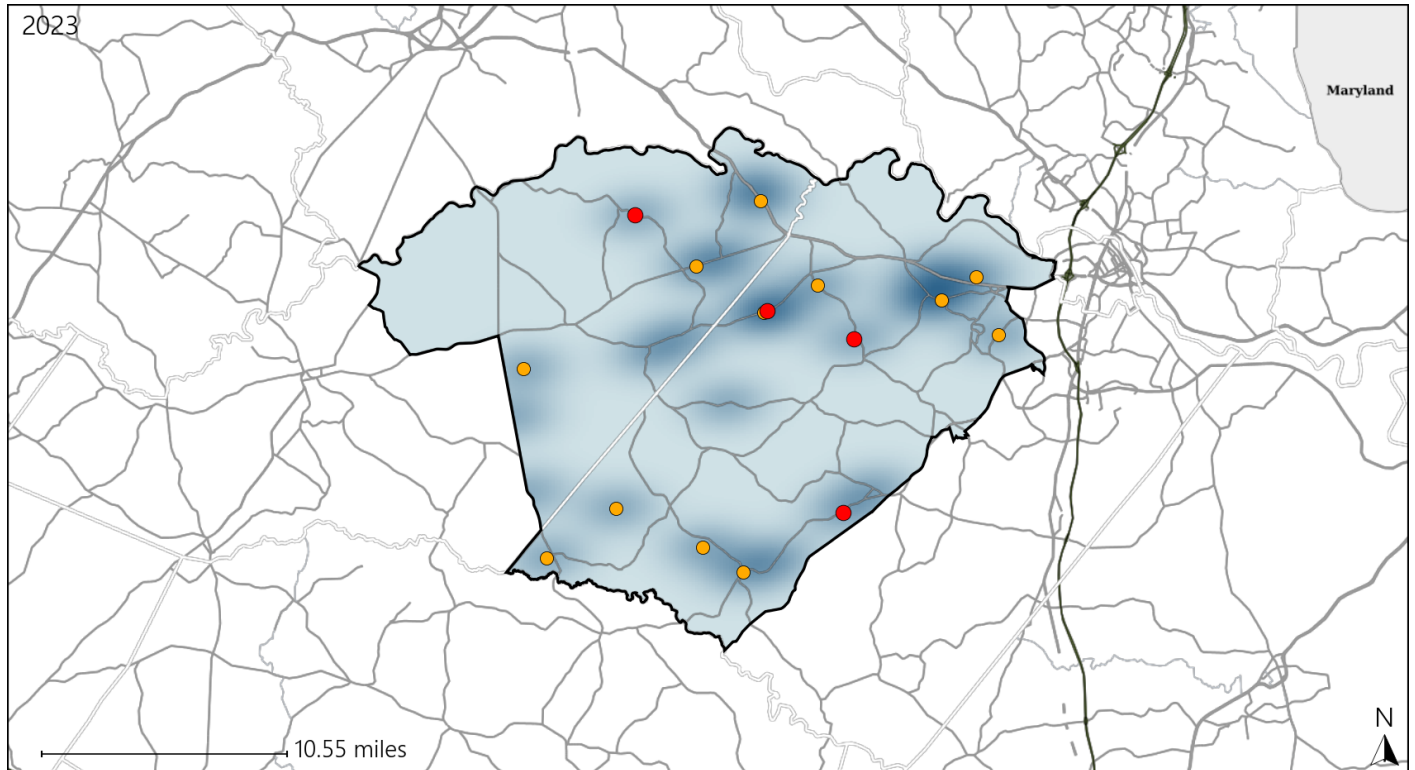


Available Crash Data - Calendar Year (CY)	CY 2020	CY 2021	CY 2022	CY 2023
Total Crashes	751	818	839	867
Fatal Crashes	11	8	9	12
Injury Crashes	199	212	210	240
Speed-Related Fatal Crashes	6	4	6	5
Percent of Speed-Related Fatal Crashes to Total Fatal Crashes	55%	50%	67%	42%
Speed-Related Injury Crashes	47	53	63	52
Percent of Speed-Related Injury Crashes to Total Injury Crashes	24%	25%	30%	22%

# Virginia House District 63 Unrestrained Crash Statistics

Report Generated May, 2024

	Count	Highest Time Period(s)	Highest Day(s)	Highest Month(s)
<b>Fatal Crashes</b>	<b>4</b>	<b>6:00am - 8:59am</b>	<b>Wednesday</b>	<b>December • February</b>
<b>Unrestrained Fatalities</b>	<b>4</b>	<b>(50%)</b>	<b>(50%)</b>	<b>(50%)</b>
<b>Serious Injury Crashes</b>	<b>12</b>	<b>Noon - 2:59pm</b>	<b>Friday • Thursday</b>	<b>October</b>
		<b>(33%)</b>	<b>(50%)</b>	<b>(33%)</b>



## House District 63 Unrestrained-Related Crashes

Interstate Crashes

Non-interstate Crashes

- Fatal
- Serious Injury

- Fatal
- Serious Injury

The blue gradient represents the density of all unrestrained-related crashes.

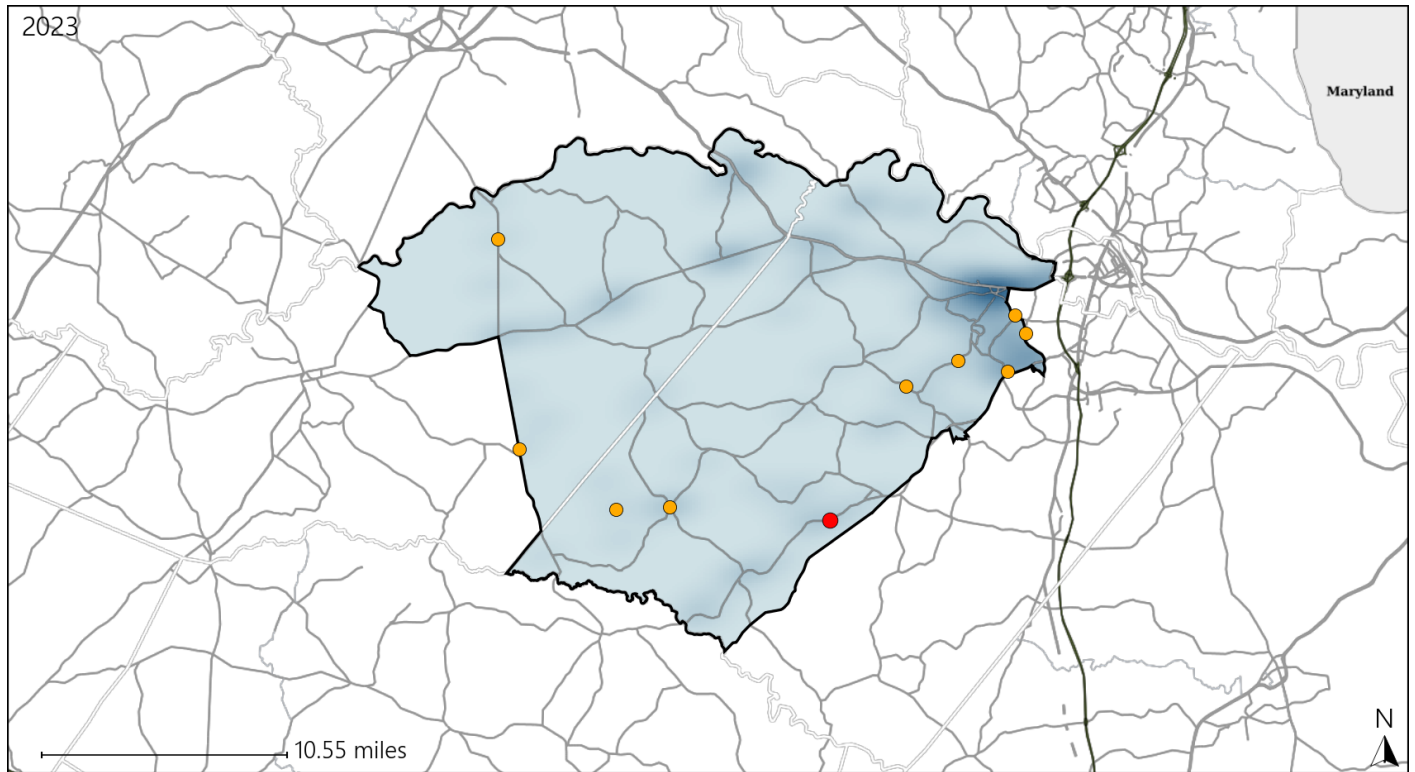


Available Crash Data - Calendar Year (CY)	CY 2020	CY 2021	CY 2022	CY 2023
<b>Total Crashes</b>	<b>751</b>	<b>818</b>	<b>839</b>	<b>867</b>
<b>Fatalities</b>	<b>11</b>	<b>11</b>	<b>9</b>	<b>13</b>
<b>Injuries</b>	<b>305</b>	<b>318</b>	<b>312</b>	<b>375</b>
<b>Unrestrained Fatalities</b>	<b>5</b>	<b>5</b>	<b>5</b>	<b>4</b>
<b>Percent of Unrestrained Fatalities to Total Fatalities</b>	<b>45%</b>	<b>45%</b>	<b>56%</b>	<b>31%</b>
<b>Unrestrained Injuries</b>	<b>39</b>	<b>28</b>	<b>39</b>	<b>27</b>
<b>Percent of Unrestrained Injuries to Total Injuries</b>	<b>13%</b>	<b>9%</b>	<b>13%</b>	<b>7%</b>

# Virginia House District 63 Distracted Driving Crash Statistics

Report Generated May, 2024

	Count	Highest Time Period(s)	Highest Day(s)	Highest Month(s)
<b>Fatal Crashes</b>	<b>1</b>	<b>3:00am - 5:59am</b>	<b>Thursday</b>	<b>March</b>
<b>Resulting Fatalities</b>	<b>1</b>	<b>(100%)</b>	<b>(100%)</b>	<b>(100%)</b>
<b>Serious Injury Crashes</b>	<b>9</b>	<b>3:00pm - 5:59pm 6:00pm - 8:59pm</b>	<b>Thursday • Tuesday</b>	<b>August • October</b>
		<b>(44%)</b>	<b>(66%)</b>	<b>(44%)</b>



## House District 63 Distracted Driving-Related Crashes

- |                    |                        |
|--------------------|------------------------|
| Interstate Crashes | Non-interstate Crashes |
| ● Fatal            | ● Fatal                |
| ⊕ Serious Injury   | ⊕ Serious Injury       |

The blue gradient represents the density of all distracted driving-related crashes.



Available Crash Data - Calendar Year (CY)	CY 2020	CY 2021	CY 2022	CY 2023
Total Crashes	751	818	839	867
Fatal Crashes	11	8	9	12
Injury Crashes	199	212	210	240
Distracted Driving-Related Fatal Crashes	1	3	2	1
Percent of Distracted Driving-Related Fatal Crashes to Total Fatal Crashes	9%	38%	22%	8%
Distracted Driving-Related Injury Crashes	46	35	36	35
Percent of Distracted Driving-Related Injury Crashes to Total Injury Crashes	23%	17%	17%	15%