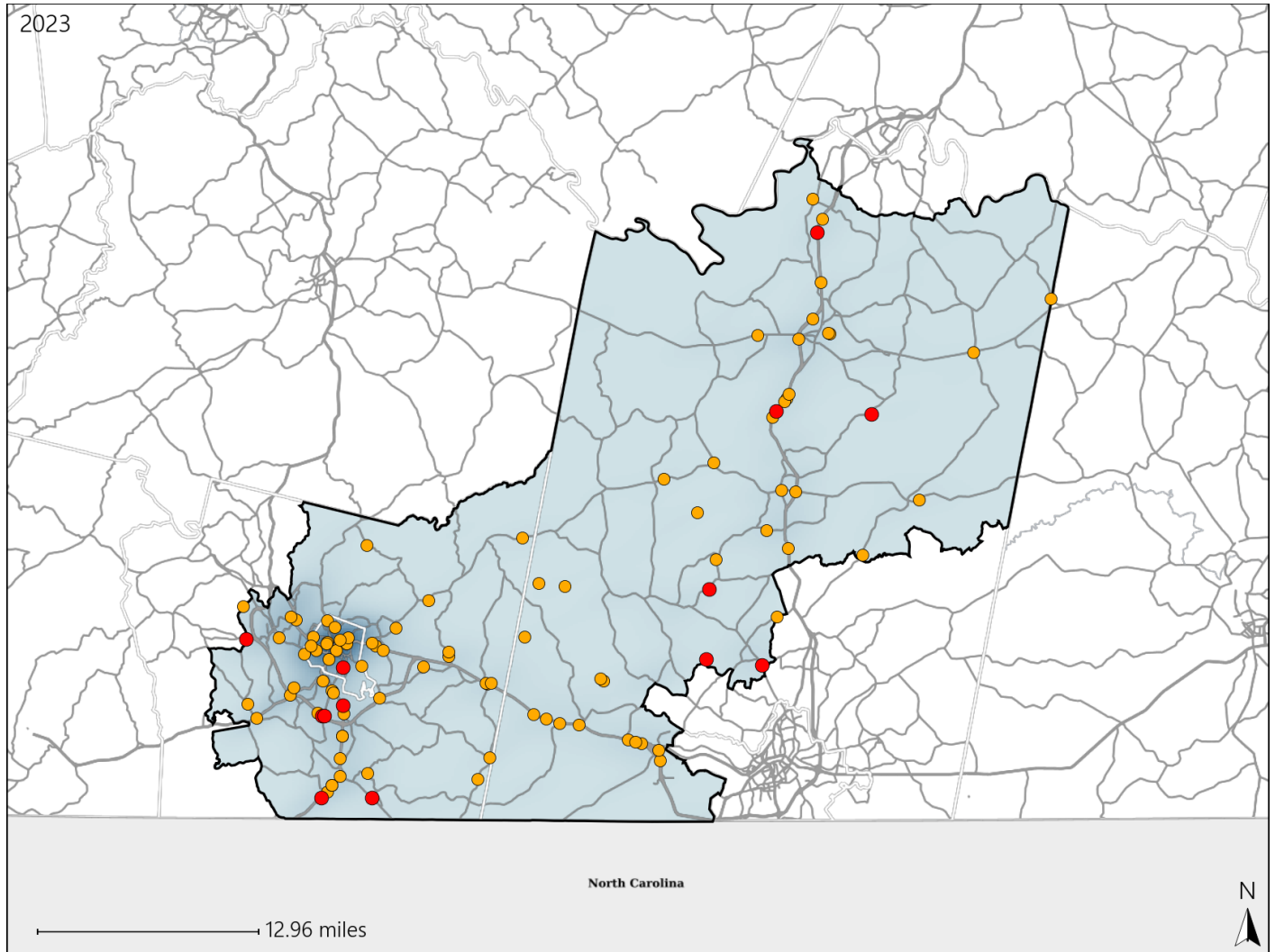


# Virginia House District 48 Crash Statistics

Report Generated May, 2024

	Count	Highest Time Period(s)	Highest Day(s)	Highest Month(s)
<b>Fatal Crashes</b>	<b>13</b>	<b>Noon - 2:59pm</b>	<b>Friday</b>	<b>May</b>
<b>Resulting Fatalities</b>	<b>13</b>	(31%)	(46%)	(23%)
<b>Serious Injury Crashes</b>	<b>92</b>	<b>3:00pm - 5:59pm</b>	<b>Sunday</b>	<b>November</b>
		(30%)	(18%)	(14%)



## House District 48 Crashes

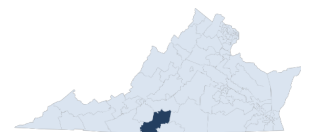
Interstate Crashes

- Fatal
- Serious Injury

Non-interstate Crashes

- Fatal
- Serious Injury

The blue gradient represents the density of all crashes.

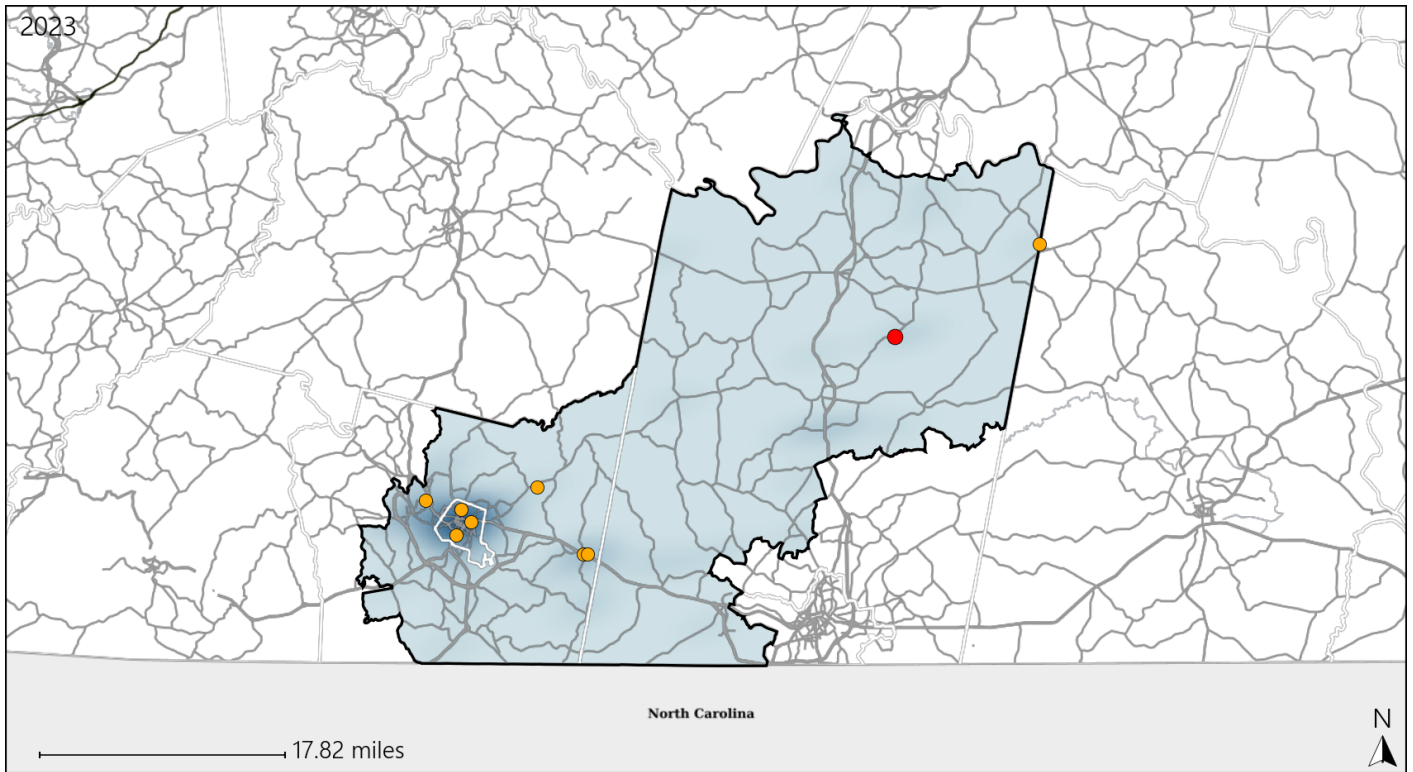


Available Crash Data - Calendar Year (CY)	CY 2020	CY 2021	CY 2022	CY 2023
Total Crashes	1237	1225	1231	1320
Fatal Crashes	24	14	19	13
Injury Crashes	380	344	362	356

# Virginia House District 48 Alcohol Crash Statistics

Report Generated May, 2024

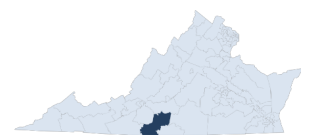
	Count	Highest Time Period(s)	Highest Day(s)	Highest Month(s)
<b>Fatal Crashes</b>	<b>1</b>	<b>9:00pm - 11:59pm</b>	<b>Friday</b>	<b>October</b>
<b>Resulting Fatalities</b>	<b>1</b>	(100%)	(100%)	(100%)
<b>Serious Injury Crashes</b>	<b>8</b>	<b>3:00pm - 5:59pm</b> <b>9:00pm - 11:59pm</b>	<b>Saturday</b>	<b>November • September</b>
		(50%)	(50%)	(50%)



## House District 48 Alcohol-Related Crashes

Interstate Crashes                      Non-interstate Crashes  
 ● Fatal                                      ● Fatal  
 ⊕ Serious Injury                          ⊕ Serious Injury

The blue gradient represents the density of all alcohol-related crashes.

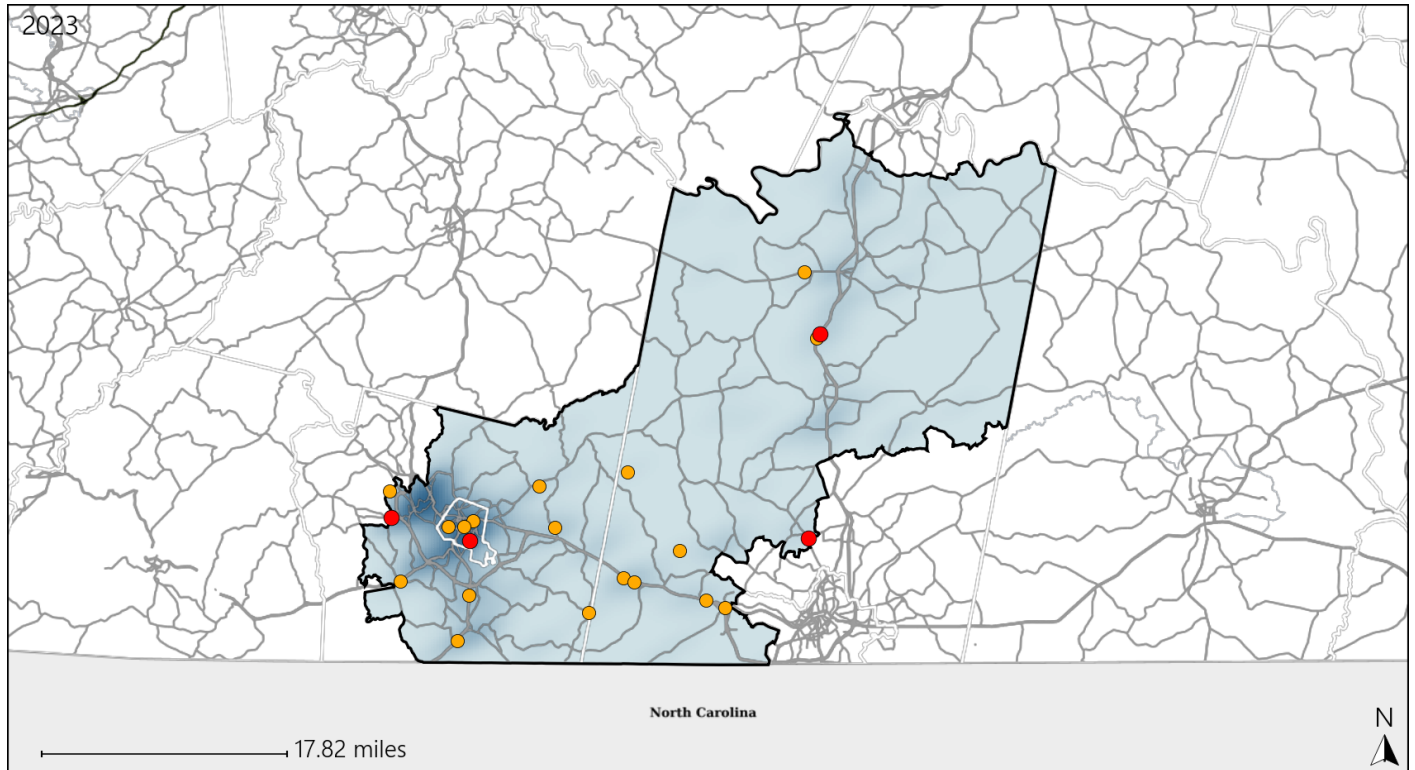


Available Crash Data - Calendar Year (CY)	CY 2020	CY 2021	CY 2022	CY 2023
Total Crashes	1237	1225	1231	1320
Fatal Crashes	24	14	19	13
Injury Crashes	380	344	362	356
Alcohol-Related Fatal Crashes	8	6	3	1
Percent of Alcohol-Related Fatal Crashes to Total Fatal Crashes	33%	43%	16%	8%
Alcohol-Related Injury Crashes	39	18	37	22
Percent of Alcohol-Related Injury Crashes to Total Injury Crashes	10%	5%	10%	6%

# Virginia House District 48 Speed Crash Statistics

Report Generated May, 2024

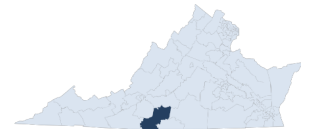
	Count	Highest Time Period(s)	Highest Day(s)	Highest Month(s)
<b>Fatal Crashes</b>	<b>4</b>	<b>Noon - 2:59pm</b>	<b>Friday • Saturday</b>	<b>January • June</b>
<b>Resulting Fatalities</b>	<b>4</b>	<b>(50%)</b>	<b>(50%)</b>	<b>(50%)</b>
<b>Serious Injury Crashes</b>	<b>19</b>	<b>3:00pm - 5:59pm</b>	<b>Sunday</b>	<b>April • November</b>
		<b>(26%)</b>	<b>(21%)</b>	<b>(42%)</b>



## House District 48 Speed-Related Crashes

Interstate Crashes                      Non-interstate Crashes  
 ● Fatal                                      ● Fatal  
 ● Serious Injury                          ● Serious Injury

The blue gradient represents the density of all speed-related crashes.

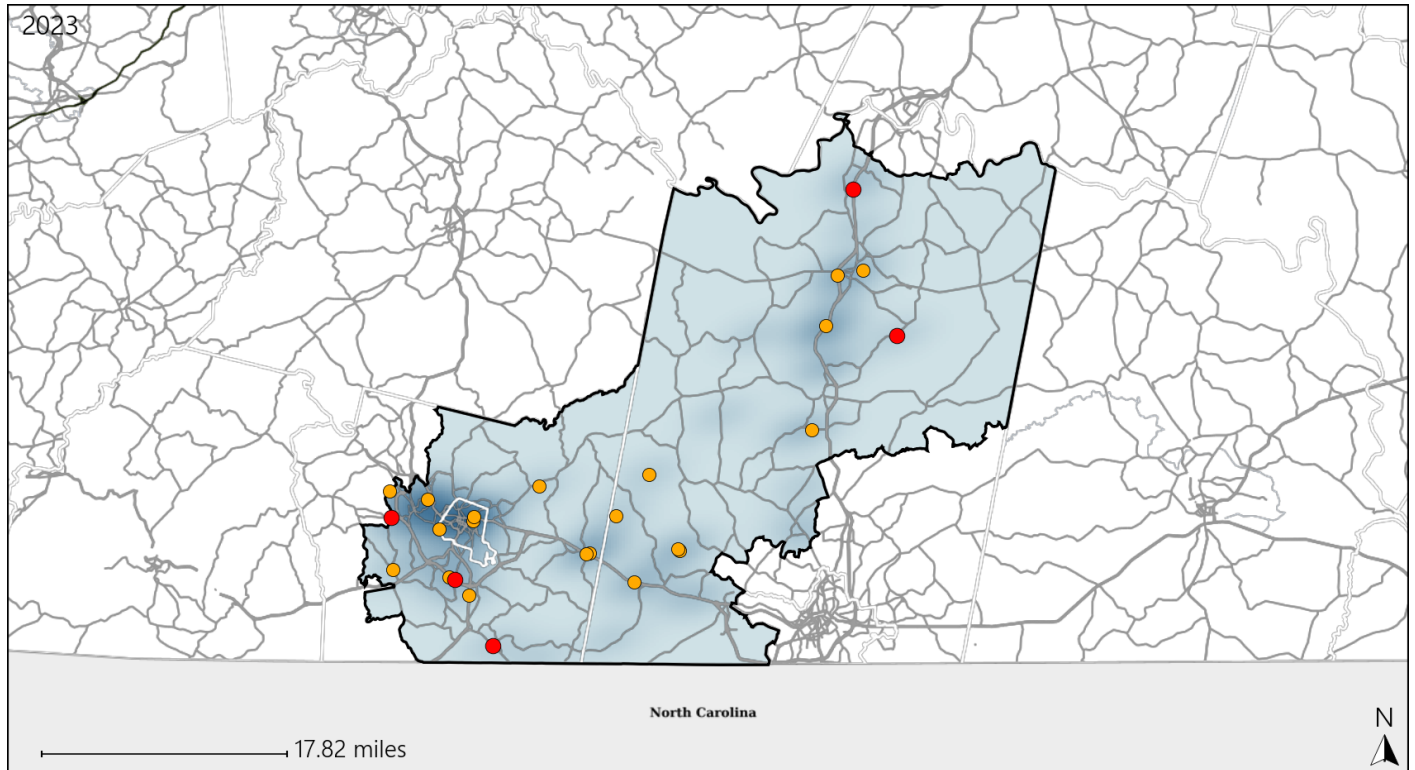


Available Crash Data - Calendar Year (CY)	CY 2020	CY 2021	CY 2022	CY 2023
Total Crashes	1237	1225	1231	1320
Fatal Crashes	24	14	19	13
Injury Crashes	380	344	362	356
Speed-Related Fatal Crashes	12	4	11	4
Percent of Speed-Related Fatal Crashes to Total Fatal Crashes	50%	29%	58%	31%
Speed-Related Injury Crashes	122	80	88	85
Percent of Speed-Related Injury Crashes to Total Injury Crashes	32%	23%	24%	24%

# Virginia House District 48 Unrestrained Crash Statistics

Report Generated May, 2024

	Count	Highest Time Period(s)	Highest Day(s)	Highest Month(s)
<b>Fatal Crashes</b>	<b>5</b>	<b>Noon - 2:59pm</b>	<b>Friday</b>	<b>March + May</b>
<b>Unrestrained Fatalities</b>	<b>5</b>	<b>(40%)</b>	<b>(80%)</b>	<b>(40%)</b>
<b>Serious Injury Crashes</b>	<b>20</b>	<b>9:00pm - 11:59pm</b>	<b>Saturday</b>	<b>November</b>
		<b>(30%)</b>	<b>(35%)</b>	<b>(30%)</b>



## House District 48 Unrestrained-Related Crashes

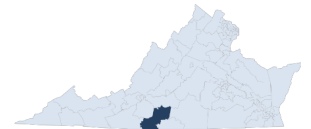
Interstate Crashes

- Fatal
- Serious Injury

Non-interstate Crashes

- Fatal
- Serious Injury

The blue gradient represents the density of all unrestrained-related crashes.

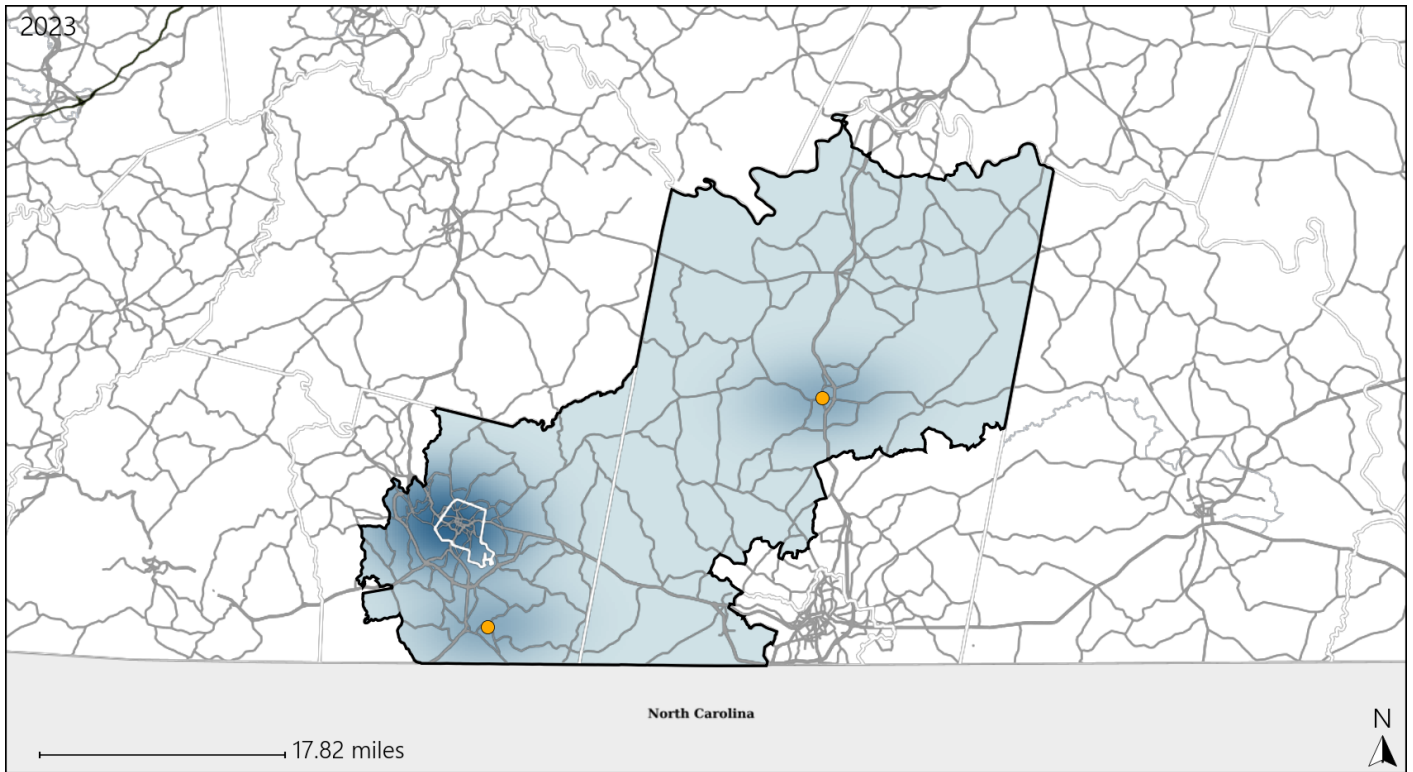


Available Crash Data - Calendar Year (CY)	CY 2020	CY 2021	CY 2022	CY 2023
<b>Total Crashes</b>	<b>1237</b>	<b>1225</b>	<b>1231</b>	<b>1320</b>
<b>Fatalities</b>	<b>25</b>	<b>14</b>	<b>19</b>	<b>13</b>
<b>Injuries</b>	<b>557</b>	<b>486</b>	<b>495</b>	<b>526</b>
<b>Unrestrained Fatalities</b>	<b>9</b>	<b>7</b>	<b>9</b>	<b>5</b>
<b>Percent of Unrestrained Fatalities to Total Fatalities</b>	<b>36%</b>	<b>50%</b>	<b>47%</b>	<b>38%</b>
<b>Unrestrained Injuries</b>	<b>76</b>	<b>70</b>	<b>75</b>	<b>62</b>
<b>Percent of Unrestrained Injuries to Total Injuries</b>	<b>14%</b>	<b>14%</b>	<b>15%</b>	<b>12%</b>

# Virginia House District 48 Pedestrian Crash Statistics

Report Generated May, 2024

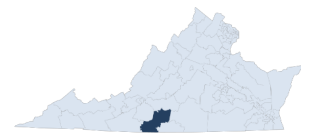
	Count	Highest Time Period(s)	Highest Day(s)	Highest Month(s)
<b>Fatal Crashes</b>	<b>0</b>	-	-	-
<b>Pedestrian Fatalities</b>	<b>0</b>	-	-	-
<b>Serious Injury Crashes</b>	<b>2</b>	3:00pm - 5:59pm 6:00pm - 8:59pm (100%)	Saturday • Wednesday (100%)	February • January (100%)



## House District 48 Pedestrian-Related Crashes

- |                    |                        |
|--------------------|------------------------|
| Interstate Crashes | Non-interstate Crashes |
| ● Fatal            | ● Fatal                |
| ⊕ Serious Injury   | ● Serious Injury       |

The blue gradient represents the density of all pedestrian-related crashes.

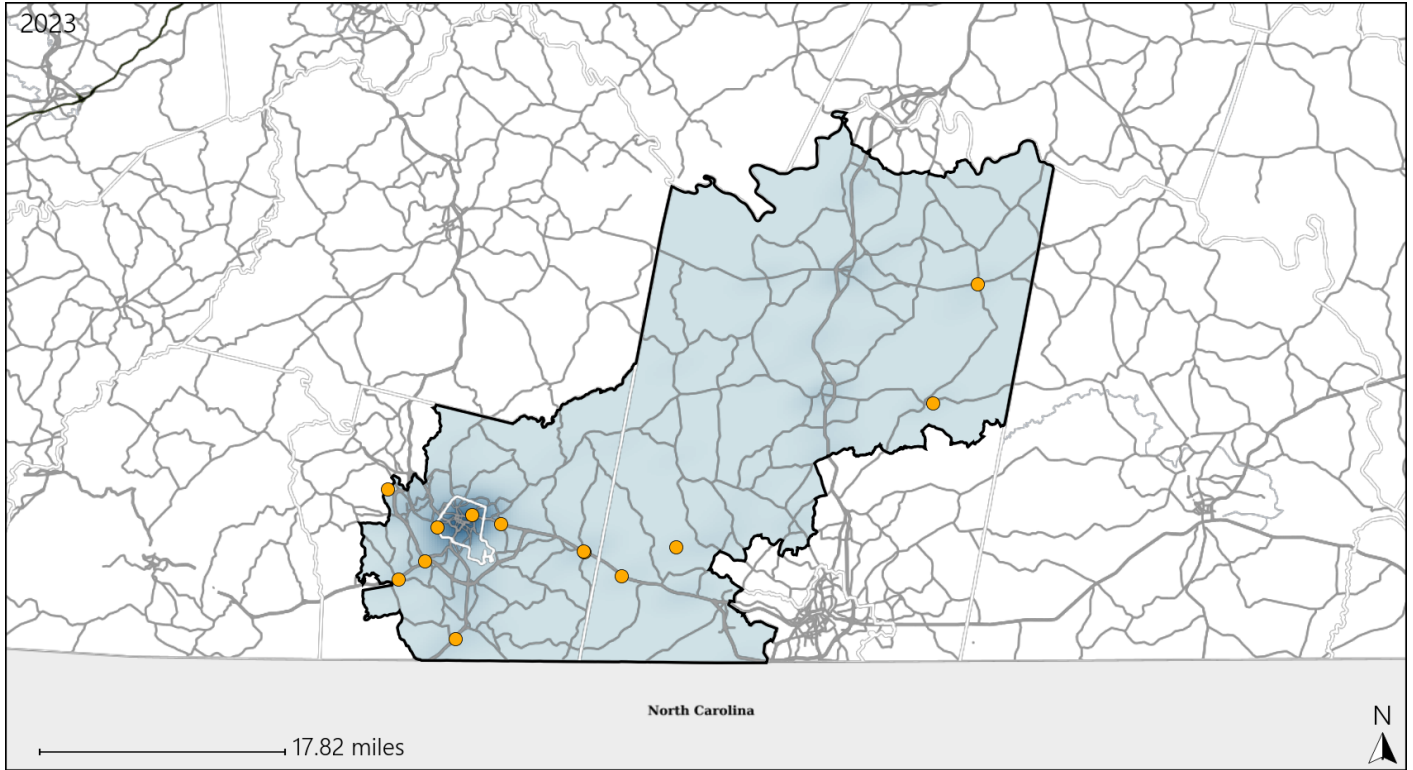


Available Crash Data - Calendar Year (CY)	CY 2020	CY 2021	CY 2022	CY 2023
Total Crashes	1237	1225	1231	1320
Fatal Crashes	24	14	19	13
Injury Crashes	380	344	362	356
Pedestrian-Related Fatal Crashes	4	1	3	0
Percent of Pedestrian-Related Fatal Crashes to Total Fatal Crashes	17%	7%	16%	0%
Pedestrian-Related Injury Crashes	5	8	11	5
Percent of Pedestrian-Related Injury Crashes to Total Injury Crashes	1%	2%	3%	1%

# Virginia House District 48 Distracted Driving Crash Statistics

Report Generated May, 2024

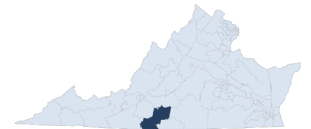
	Count	Highest Time Period(s)	Highest Day(s)	Highest Month(s)
<b>Fatal Crashes</b>	0	-	-	-
<b>Resulting Fatalities</b>	0	-	-	-
<b>Serious Injury Crashes</b>	13	9:00pm - 11:59pm (23%)	Wednesday (31%)	November (31%)



## House District 48 Distracted Driving-Related Crashes

- |                    |                        |
|--------------------|------------------------|
| Interstate Crashes | Non-interstate Crashes |
| ● Fatal            | ● Fatal                |
| ● Serious Injury   | ● Serious Injury       |

The blue gradient represents the density of all distracted driving-related crashes.



Available Crash Data - Calendar Year (CY)	CY 2020	CY 2021	CY 2022	CY 2023
Total Crashes	1237	1225	1231	1320
Fatal Crashes	24	14	19	13
Injury Crashes	380	344	362	356
Distracted Driving-Related Fatal Crashes	2	0	5	0
Percent of Distracted Driving-Related Fatal Crashes to Total Fatal Crashes	8%	0%	26%	0%
Distracted Driving-Related Injury Crashes	43	43	49	46
Percent of Distracted Driving-Related Injury Crashes to Total Injury Crashes	11%	13%	14%	13%