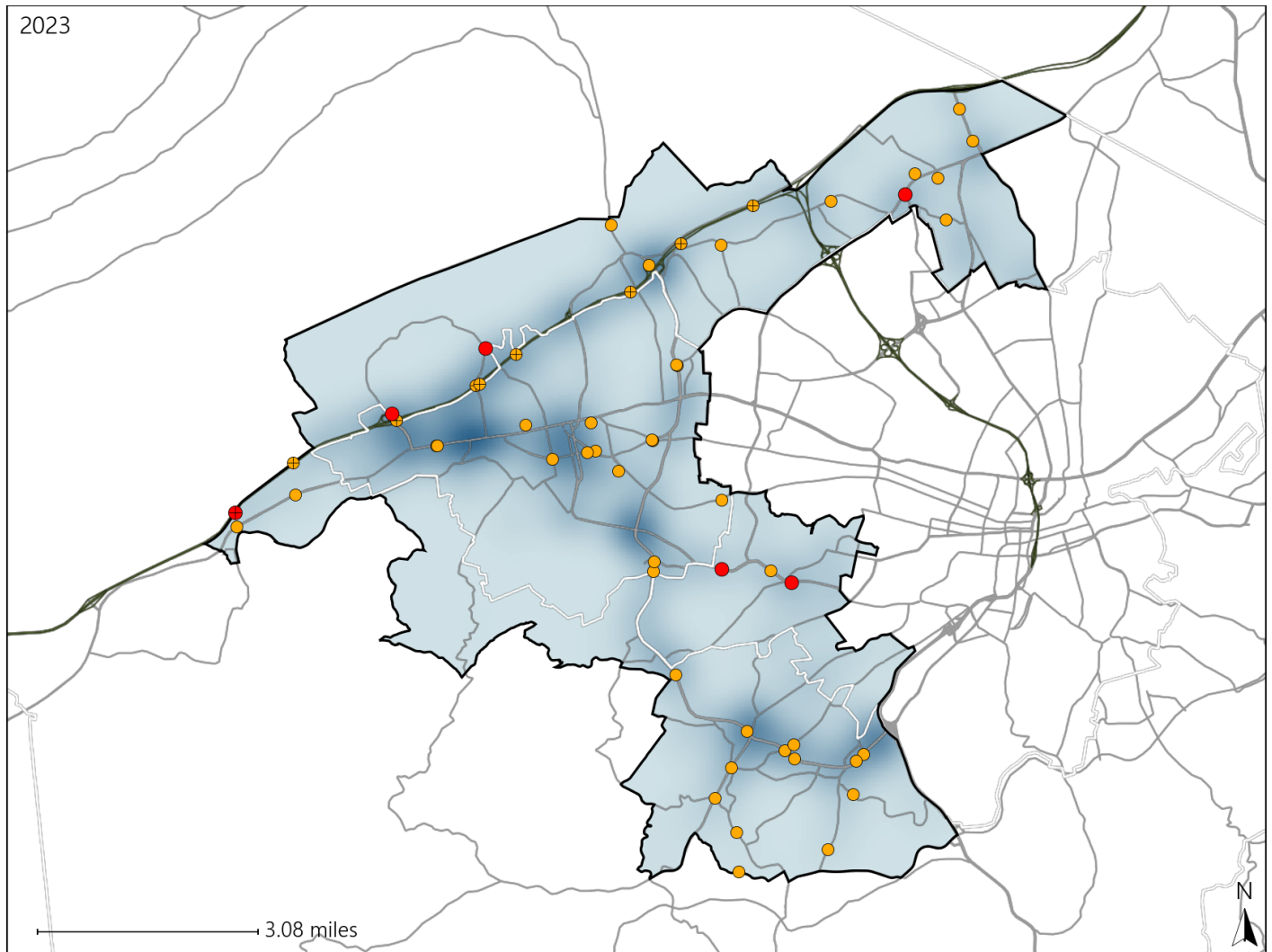


# Virginia House District 40 Crash Statistics

Report Generated May, 2024

	Count	Highest Time Period(s)	Highest Day(s)	Highest Month(s)
<b>Fatal Crashes</b>	<b>6</b>	3:00am - 5:59am	Saturday • Tuesday	May
<b>Resulting Fatalities</b>	<b>6</b>	9:00pm - 11:59pm (66%)	(66%)	(33%)
<b>Serious Injury Crashes</b>	<b>48</b>	3:00pm - 5:59pm Noon - 2:59pm (46%)	Friday (21%)	October (15%)



### House District 40 Crashes

Interstate Crashes

- Fatal
- ⊕ Serious Injury

Non-interstate Crashes

- Fatal
- Serious Injury

The blue gradient represents the density of all crashes.

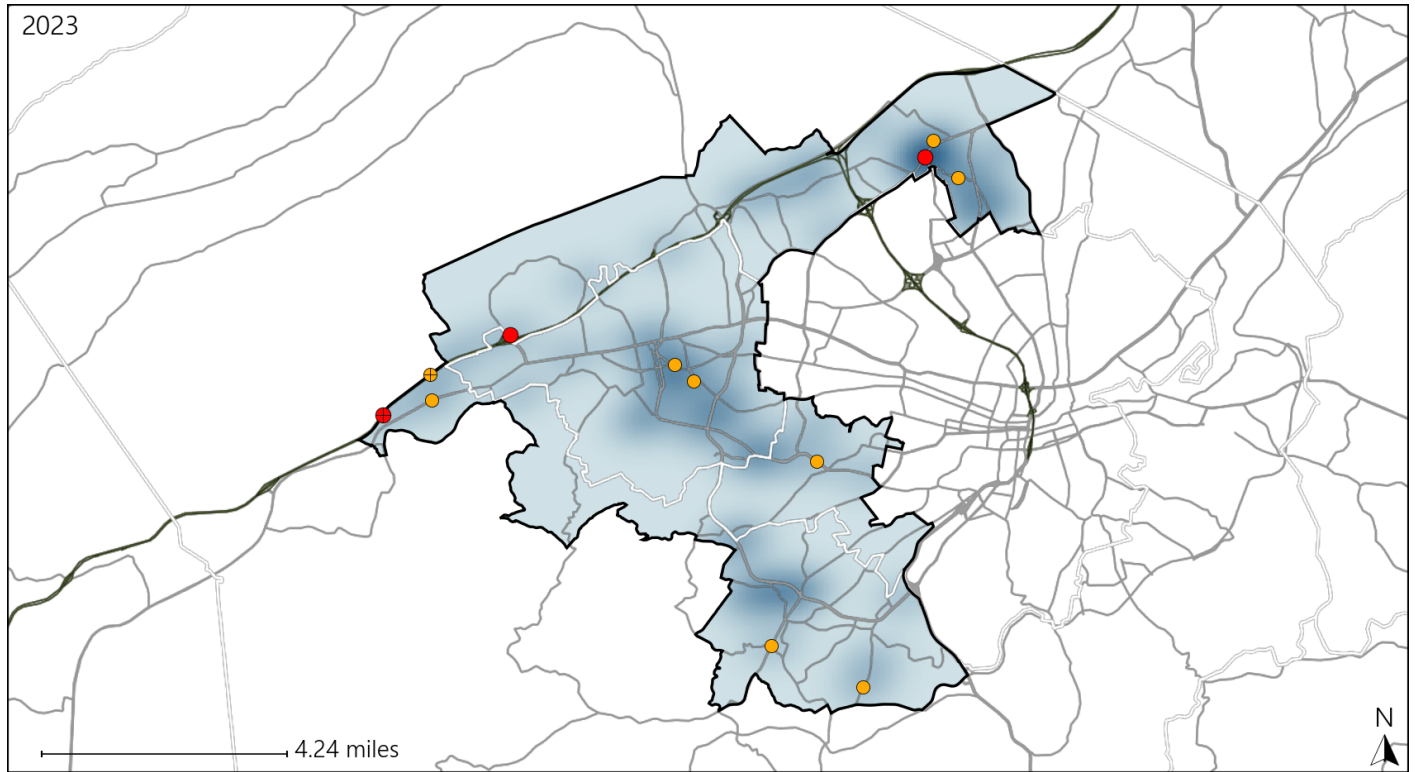


Available Crash Data - Calendar Year (CY)	CY 2020	CY 2021	CY 2022	CY 2023
Total Crashes	1155	1237	1394	1455
Fatal Crashes	5	4	4	6
Injury Crashes	336	357	369	344

# Virginia House District 40 Alcohol Crash Statistics

Report Generated May, 2024

	Count	Highest Time Period(s)	Highest Day(s)	Highest Month(s)
<b>Fatal Crashes</b>	<b>3</b>	<b>9:00pm - 11:59pm</b>	<b>Saturday</b>	<b>August • May</b>
<b>Resulting Fatalities</b>	<b>3</b>	<b>(67%)</b>	<b>(67%)</b>	<b>(66%)</b>
<b>Serious Injury Crashes</b>	<b>9</b>	<b>Midnight - 2:59am</b>	<b>Saturday</b>	<b>February • May</b>
		<b>(44%)</b>	<b>(44%)</b>	<b>(44%)</b>



## House District 40 Alcohol-Related Crashes

Interstate Crashes                      Non-interstate Crashes  
 ● Fatal                                      ● Fatal  
 ⊕ Serious Injury                          ⊕ Serious Injury

The blue gradient represents the density of all alcohol-related crashes.

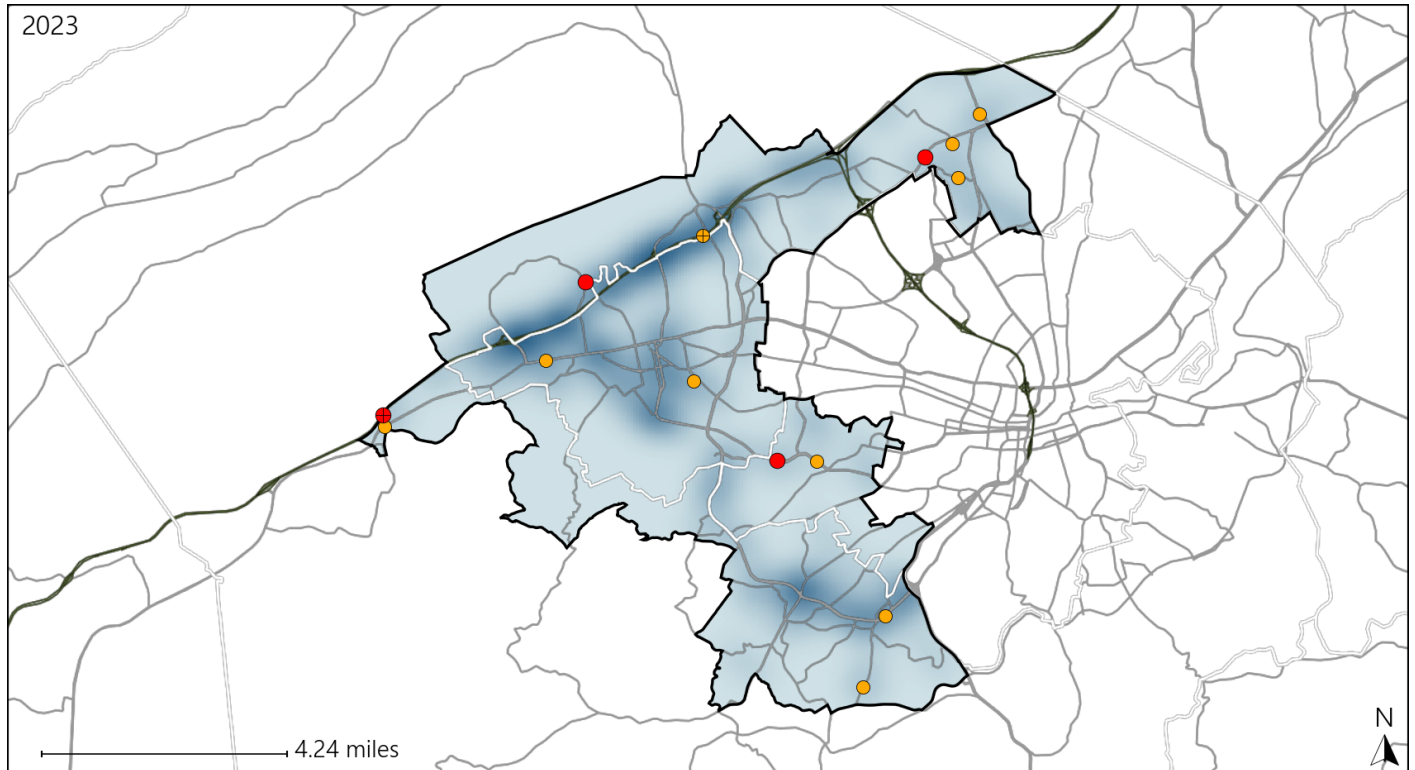


Available Crash Data - Calendar Year (CY)	CY 2020	CY 2021	CY 2022	CY 2023
<b>Total Crashes</b>	<b>1155</b>	<b>1237</b>	<b>1394</b>	<b>1455</b>
<b>Fatal Crashes</b>	<b>5</b>	<b>4</b>	<b>4</b>	<b>6</b>
<b>Injury Crashes</b>	<b>336</b>	<b>357</b>	<b>369</b>	<b>344</b>
<b>Alcohol-Related Fatal Crashes</b>	<b>1</b>	<b>0</b>	<b>0</b>	<b>3</b>
<b>Percent of Alcohol-Related Fatal Crashes to Total Fatal Crashes</b>	<b>20%</b>	<b>0%</b>	<b>0%</b>	<b>50%</b>
<b>Alcohol-Related Injury Crashes</b>	<b>11</b>	<b>26</b>	<b>21</b>	<b>20</b>
<b>Percent of Alcohol-Related Injury Crashes to Total Injury Crashes</b>	<b>3%</b>	<b>7%</b>	<b>6%</b>	<b>6%</b>

# Virginia House District 40 Speed Crash Statistics

Report Generated May, 2024

	Count	Highest Time Period(s)	Highest Day(s)	Highest Month(s)
<b>Fatal Crashes</b>	<b>4</b>	<b>3:00am - 5:59am</b>	<b>Saturday</b>	<b>August • January</b>
<b>Resulting Fatalities</b>	<b>4</b>	<b>(50%)</b>	<b>(50%)</b>	<b>(50%)</b>
<b>Serious Injury Crashes</b>	<b>10</b>	<b>Midnight - 2:59am</b>	<b>Monday</b>	<b>February • May</b>
		<b>(30%)</b>	<b>(30%)</b>	<b>(40%)</b>




## House District 40 Speed-Related Crashes


Interstate Crashes

Non-interstate Crashes

 Fatal

 Fatal

 Serious Injury

 Serious Injury

The blue gradient represents the density of all speed-related crashes.

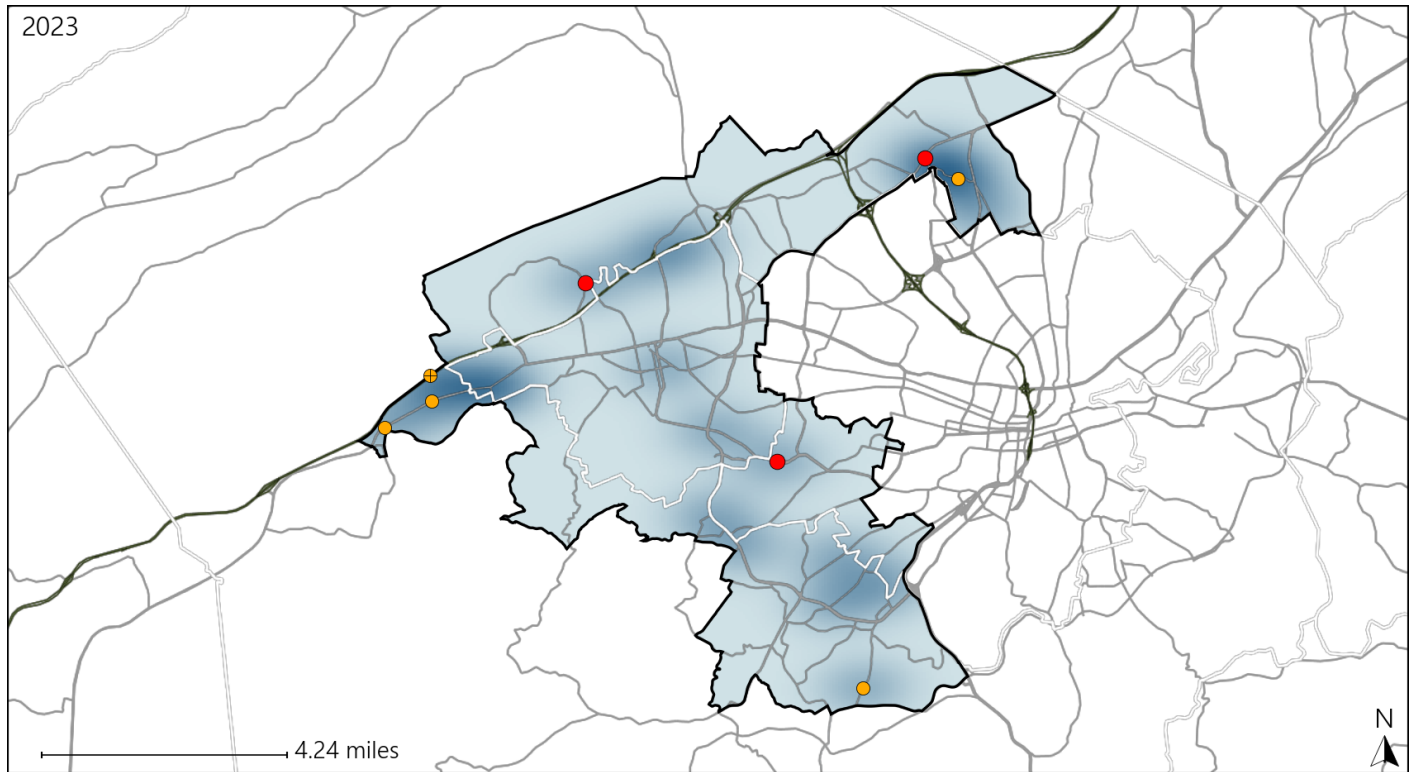


Available Crash Data - Calendar Year (CY)	CY 2020	CY 2021	CY 2022	CY 2023
<b>Total Crashes</b>	<b>1155</b>	<b>1237</b>	<b>1394</b>	<b>1455</b>
<b>Fatal Crashes</b>	<b>5</b>	<b>4</b>	<b>4</b>	<b>6</b>
<b>Injury Crashes</b>	<b>336</b>	<b>357</b>	<b>369</b>	<b>344</b>
<b>Speed-Related Fatal Crashes</b>	<b>4</b>	<b>0</b>	<b>1</b>	<b>4</b>
<b>Percent of Speed-Related Fatal Crashes to Total Fatal Crashes</b>	<b>80%</b>	<b>0%</b>	<b>25%</b>	<b>67%</b>
<b>Speed-Related Injury Crashes</b>	<b>55</b>	<b>64</b>	<b>73</b>	<b>74</b>
<b>Percent of Speed-Related Injury Crashes to Total Injury Crashes</b>	<b>16%</b>	<b>18%</b>	<b>20%</b>	<b>22%</b>

# Virginia House District 40 Unrestrained Crash Statistics

Report Generated May, 2024

	Count	Highest Time Period(s)	Highest Day(s)	Highest Month(s)
<b>Fatal Crashes</b>	<b>3</b>	<b>3:00am - 5:59am</b>	<b>Monday • Saturday</b>	<b>August • January</b>
<b>Unrestrained Fatalities</b>	<b>3</b>	(67%)	(66%)	(66%)
<b>Serious Injury Crashes</b>	<b>5</b>	<b>6:00am - 8:59am</b> <b>Midnight - 2:59am</b>	<b>Saturday</b>	<b>November</b>
		(80%)	(40%)	(40%)



### House District 40 Unrestrained-Related Crashes

- |  |  |
|--|--|
| Interstate Crashes                                   | Non-interstate Crashes                               |
| <span style="color: red;">●</span> Fatal             | <span style="color: red;">●</span> Fatal             |
| <span style="color: orange;">⊕</span> Serious Injury | <span style="color: orange;">●</span> Serious Injury |

The blue gradient represents the density of all unrestrained-related crashes.

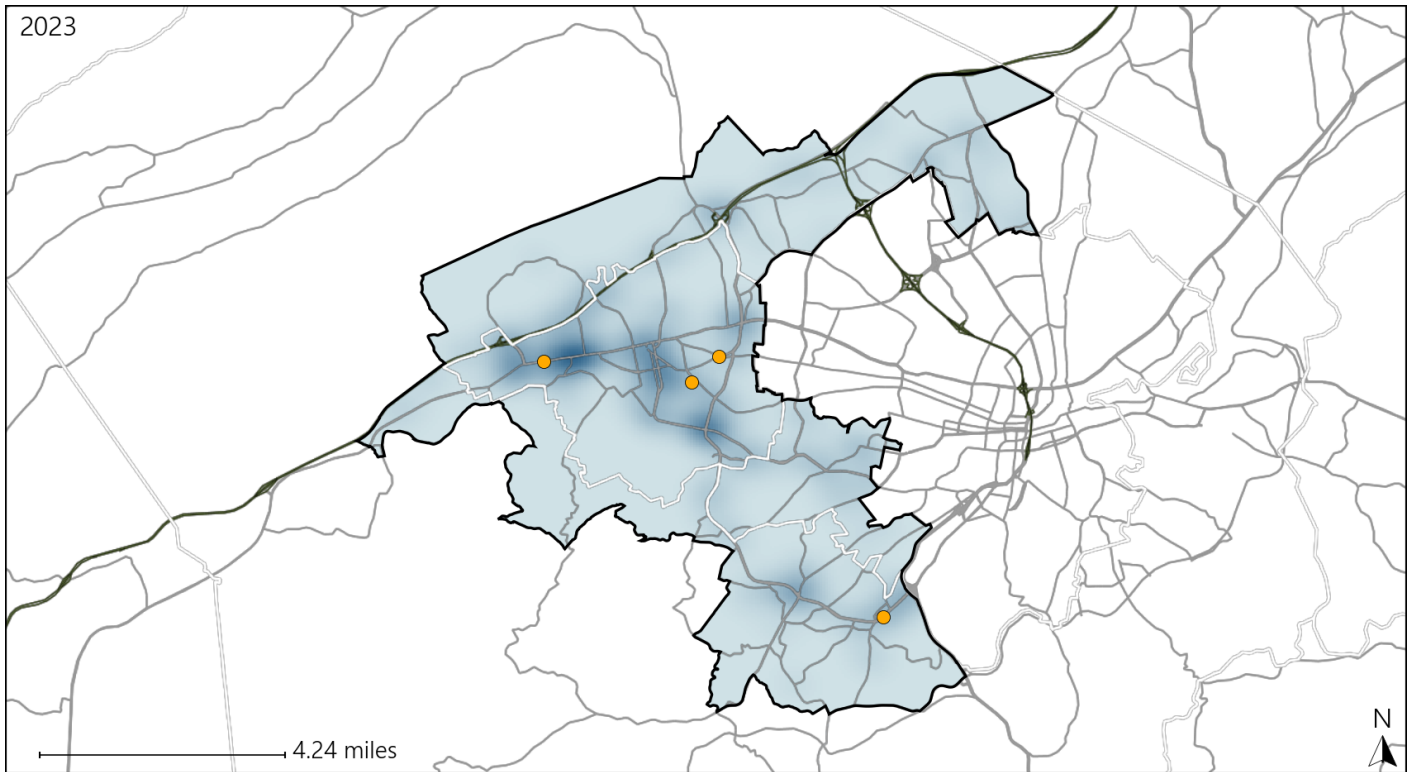


Available Crash Data - Calendar Year (CY)	CY 2020	CY 2021	CY 2022	CY 2023
<b>Total Crashes</b>	<b>1155</b>	<b>1237</b>	<b>1394</b>	<b>1455</b>
<b>Fatalities</b>	<b>5</b>	<b>4</b>	<b>4</b>	<b>6</b>
<b>Injuries</b>	<b>451</b>	<b>471</b>	<b>503</b>	<b>455</b>
<b>Unrestrained Fatalities</b>	<b>0</b>	<b>1</b>	<b>1</b>	<b>3</b>
<b>Percent of Unrestrained Fatalities to Total Fatalities</b>	<b>0%</b>	<b>25%</b>	<b>25%</b>	<b>50%</b>
<b>Unrestrained Injuries</b>	<b>23</b>	<b>17</b>	<b>27</b>	<b>18</b>
<b>Percent of Unrestrained Injuries to Total Injuries</b>	<b>5%</b>	<b>4%</b>	<b>5%</b>	<b>4%</b>

# Virginia House District 40 Distracted Driving Crash Statistics

Report Generated May, 2024

	Count	Highest Time Period(s)	Highest Day(s)	Highest Month(s)
<b>Fatal Crashes</b>	0	-	-	-
<b>Resulting Fatalities</b>	0	-	-	-
<b>Serious Injury Crashes</b>	4	3:00pm - 5:59pm 9:00am - 11:59am (50%)	Sunday (50%)	May (50%)



### House District 40 Distracted Driving-Related Crashes

- |                    |                        |
|--------------------|------------------------|
| Interstate Crashes | Non-interstate Crashes |
| ● Fatal            | ● Fatal                |
| ⊕ Serious Injury   | ● Serious Injury       |

The blue gradient represents the density of all distracted driving-related crashes.



Available Crash Data - Calendar Year (CY)	CY 2020	CY 2021	CY 2022	CY 2023
Total Crashes	1155	1237	1394	1455
Fatal Crashes	5	4	4	6
Injury Crashes	336	357	369	344
Distracted Driving-Related Fatal Crashes	0	2	1	0
Percent of Distracted Driving-Related Fatal Crashes to Total Fatal Crashes	0%	50%	25%	0%
Distracted Driving-Related Injury Crashes	84	87	91	77
Percent of Distracted Driving-Related Injury Crashes to Total Injury Crashes	25%	24%	25%	22%