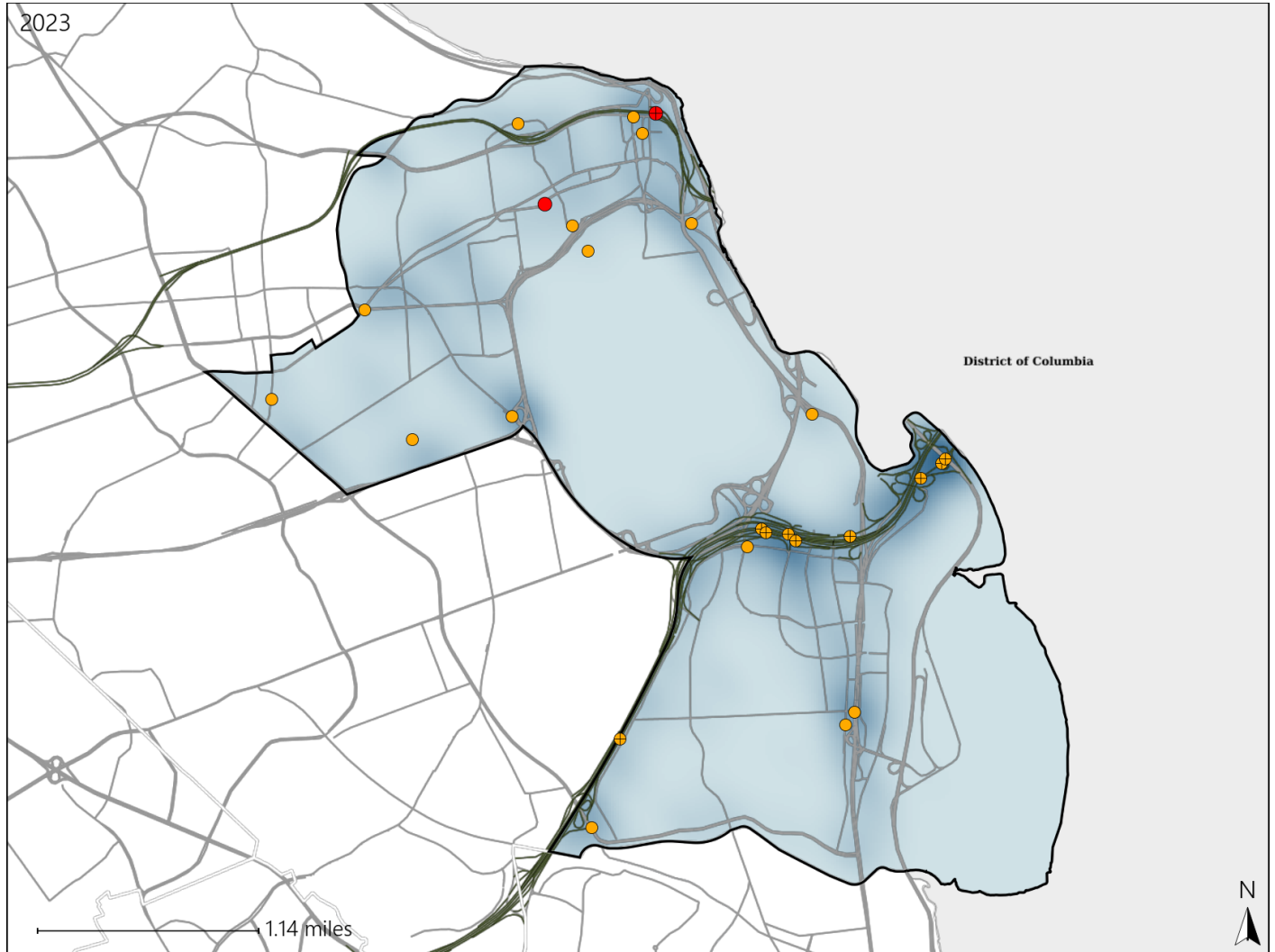


Virginia House District 2 Crash Statistics

Report Generated May, 2024

	Count	Highest Time Period(s)	Highest Day(s)	Highest Month(s)
Fatal Crashes	2	3:00am - 5:59am	Friday • Saturday	August • March
Resulting Fatalities	2	9:00pm - 11:59pm (100%)	(100%)	(100%)
Serious Injury Crashes	24	6:00pm - 8:59pm (25%)	Monday (25%)	August • November (34%)



House District 2 Crashes

Interstate Crashes

- Fatal
- Serious Injury

Non-interstate Crashes

- Fatal
- Serious Injury

The blue gradient represents the density of all crashes.

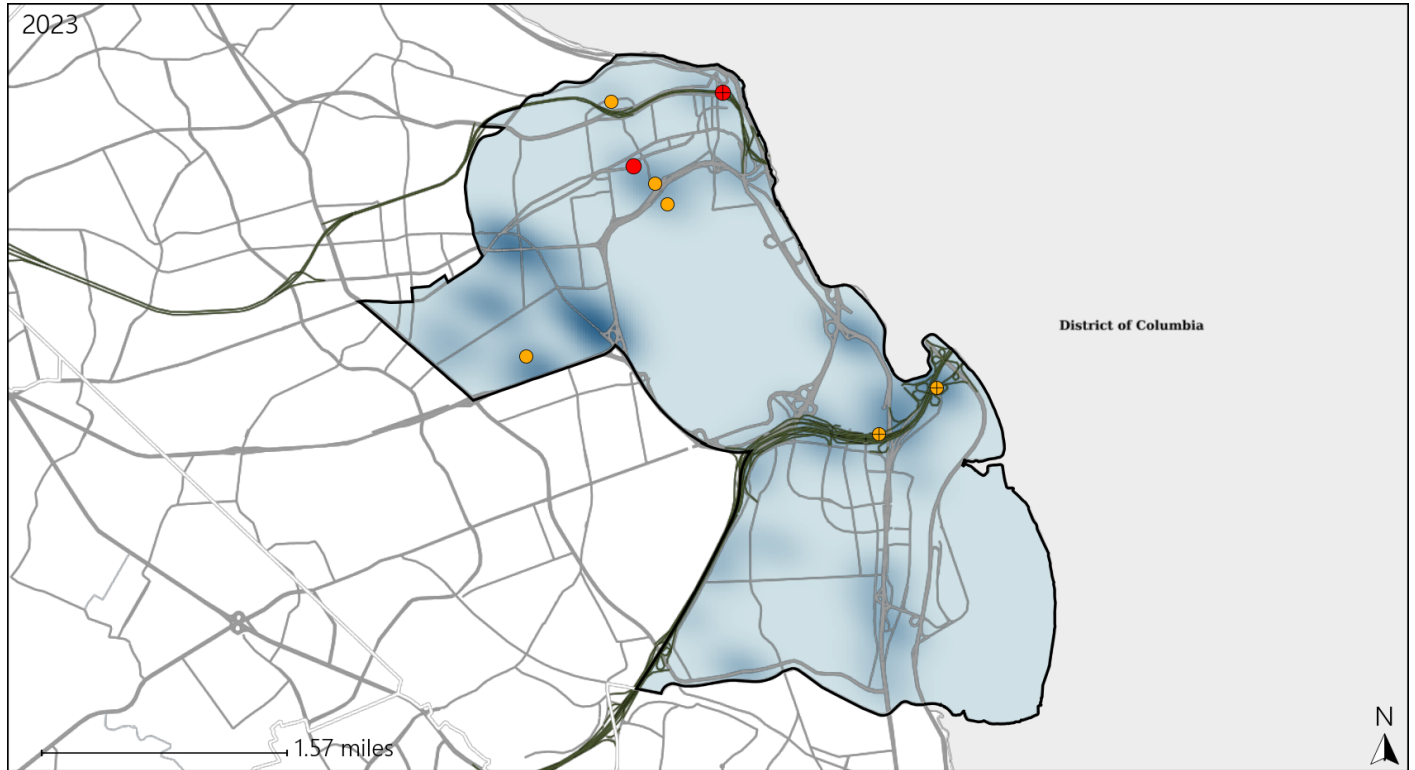


Available Crash Data - Calendar Year (CY)	CY 2020	CY 2021	CY 2022	CY 2023
Total Crashes	688	881	961	940
Fatal Crashes	1	1	0	2
Injury Crashes	197	248	244	264

Virginia House District 2 Alcohol Crash Statistics

Report Generated May, 2024

	Count	Highest Time Period(s)	Highest Day(s)	Highest Month(s)
Fatal Crashes	2	3:00am - 5:59am	Friday • Saturday	August • March
Resulting Fatalities	2	9:00pm - 11:59pm (100%)	(100%)	(100%)
Serious Injury Crashes	6	9:00pm - 11:59pm (67%)	Friday • Monday (34%)	August • December (34%)



House District 2 Alcohol-Related Crashes

Interstate Crashes

Non-interstate Crashes

- Fatal
- Serious Injury

- Fatal
- Serious Injury

The blue gradient represents the density of all alcohol-related crashes.

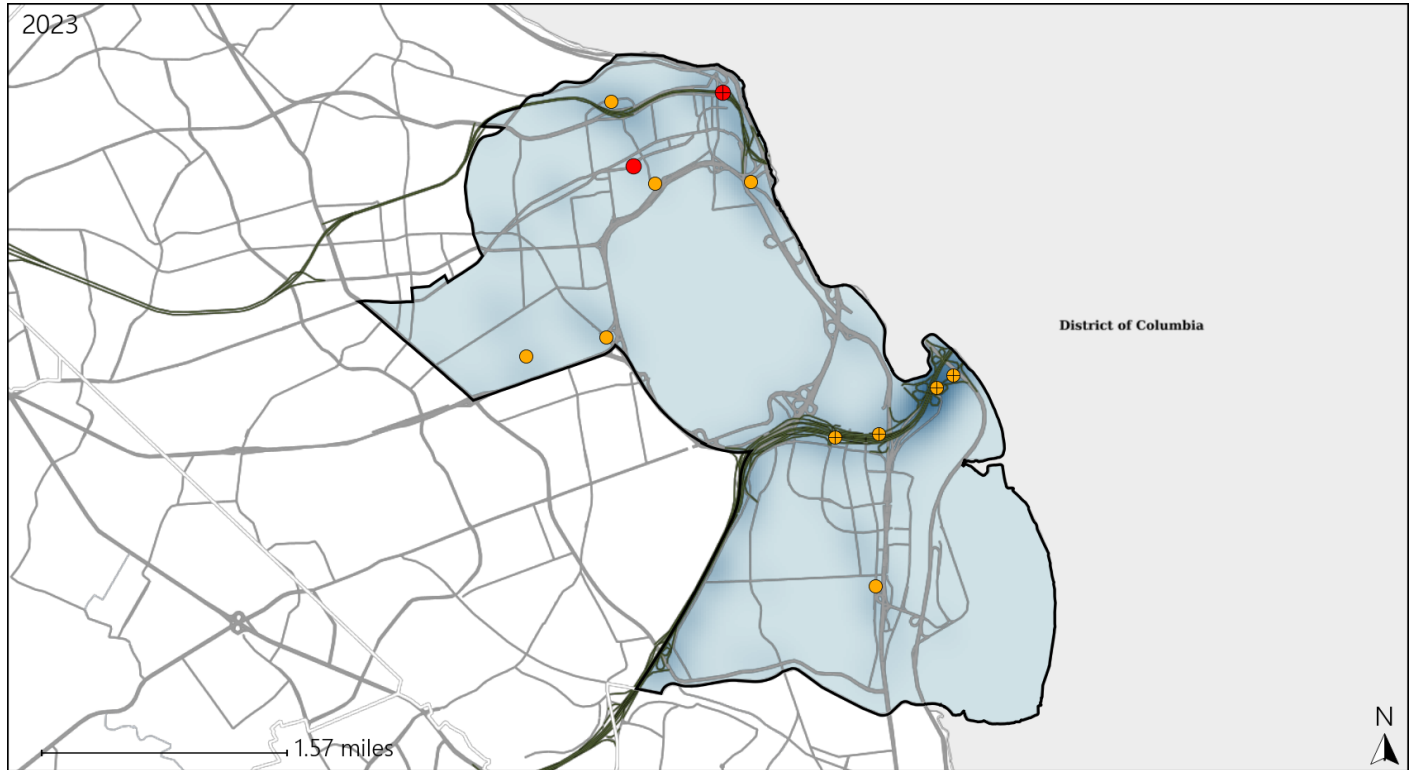


Available Crash Data - Calendar Year (CY)	CY 2020	CY 2021	CY 2022	CY 2023
Total Crashes	688	881	961	940
Fatal Crashes	1	1	0	2
Injury Crashes	197	248	244	264
Alcohol-Related Fatal Crashes	0	0	0	2
Percent of Alcohol-Related Fatal Crashes to Total Fatal Crashes	0%	0%	0%	100%
Alcohol-Related Injury Crashes	16	28	27	28
Percent of Alcohol-Related Injury Crashes to Total Injury Crashes	8%	11%	11%	11%

Virginia House District 2 Speed Crash Statistics

Report Generated May, 2024

	Count	Highest Time Period(s)	Highest Day(s)	Highest Month(s)
Fatal Crashes	2	3:00am - 5:59am	Friday • Saturday	August • March
Resulting Fatalities	2	9:00pm - 11:59pm (100%)	(100%)	(100%)
Serious Injury Crashes	10	9:00pm - 11:59pm (40%)	Sunday (30%)	November (20%)



House District 2 Speed-Related Crashes

Interstate Crashes

Non-interstate Crashes

- Fatal
- Serious Injury

- Fatal
- Serious Injury

The blue gradient represents the density of all speed-related crashes.

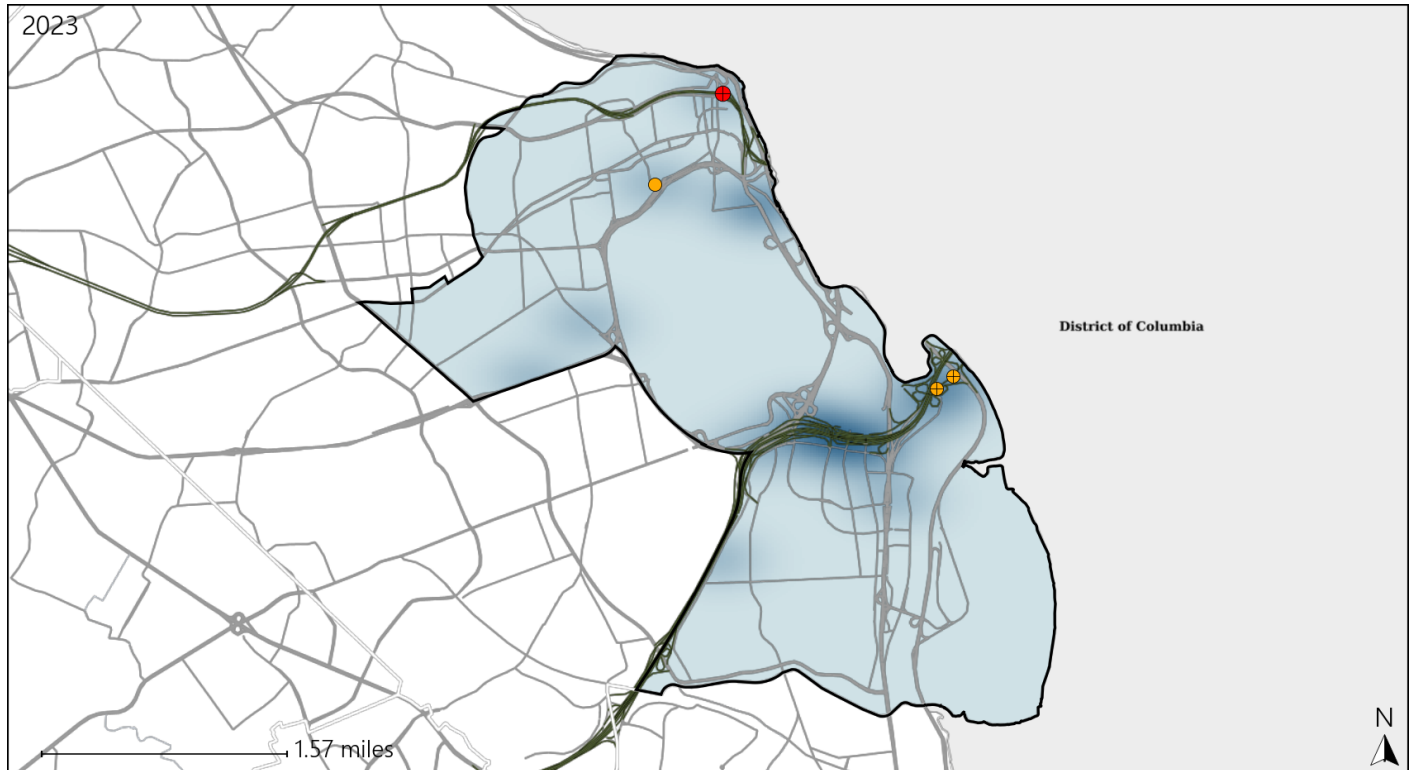


Available Crash Data - Calendar Year (CY)	CY 2020	CY 2021	CY 2022	CY 2023
Total Crashes	688	881	961	940
Fatal Crashes	1	1	0	2
Injury Crashes	197	248	244	264
Speed-Related Fatal Crashes	0	0	0	2
Percent of Speed-Related Fatal Crashes to Total Fatal Crashes	0%	0%	0%	100%
Speed-Related Injury Crashes	48	70	57	64
Percent of Speed-Related Injury Crashes to Total Injury Crashes	24%	28%	23%	24%

Virginia House District 2 Unrestrained Crash Statistics

Report Generated May, 2024

	Count	Highest Time Period(s)	Highest Day(s)	Highest Month(s)
Fatal Crashes	1	3:00am - 5:59am	Saturday	March
Unrestrained Fatalities	1	(100%)	(100%)	(100%)
Serious Injury Crashes	3	Midnight - 2:59am	Sunday	January • July
		(67%)	(67%)	(66%)



House District 2 Unrestrained-Related Crashes

Interstate Crashes

- Fatal
- Serious Injury

Non-interstate Crashes

- Fatal
- Serious Injury

The blue gradient represents the density of all unrestrained-related crashes.

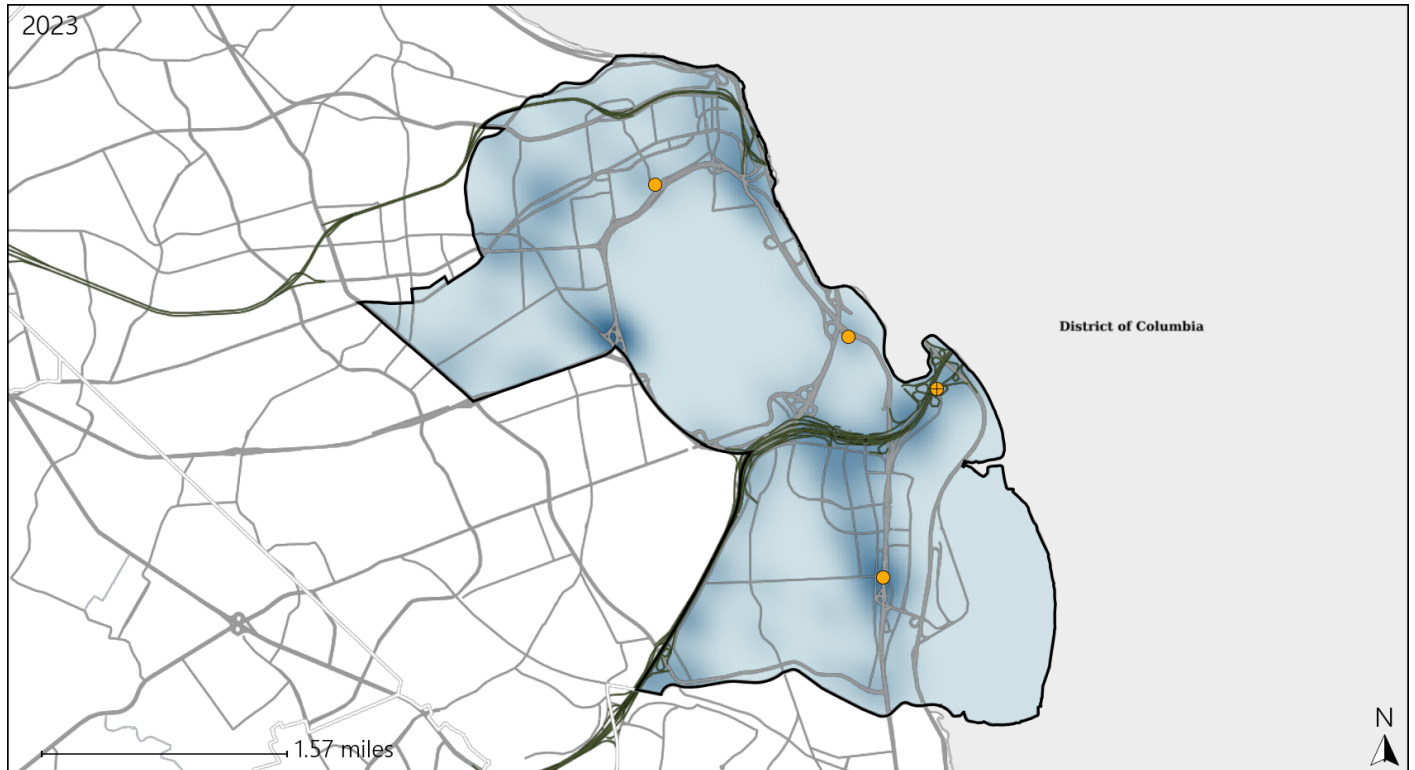


Available Crash Data - Calendar Year (CY)	CY 2020	CY 2021	CY 2022	CY 2023
Total Crashes	688	881	961	940
Fatalities	1	1	0	2
Injuries	271	345	359	383
Unrestrained Fatalities	0	1	0	1
Percent of Unrestrained Fatalities to Total Fatalities	0%	100%	0%	50%
Unrestrained Injuries	8	13	19	18
Percent of Unrestrained Injuries to Total Injuries	3%	4%	5%	5%

Virginia House District 2 Distracted Driving Crash Statistics

Report Generated May, 2024

	Count	Highest Time Period(s)	Highest Day(s)	Highest Month(s)
Fatal Crashes	0	-	-	-
Resulting Fatalities	0	-	-	-
Serious Injury Crashes	4	Midnight - 2:59am (50%)	Monday (50%)	January • July (50%)



House District 2 Distracted Driving-Related Crashes

- | | |
|--------------------|------------------------|
| Interstate Crashes | Non-interstate Crashes |
| ● Fatal | ● Fatal |
| ● Serious Injury | ● Serious Injury |

The blue gradient represents the density of all distracted driving-related crashes.



Available Crash Data - Calendar Year (CY)	CY 2020	CY 2021	CY 2022	CY 2023
Total Crashes	688	881	961	940
Fatal Crashes	1	1	0	2
Injury Crashes	197	248	244	264
Distracted Driving-Related Fatal Crashes	0	0	0	0
Percent of Distracted Driving-Related Fatal Crashes to Total Fatal Crashes	0%	0%	0%	0%
Distracted Driving-Related Injury Crashes	38	44	50	42
Percent of Distracted Driving-Related Injury Crashes to Total Injury Crashes	19%	18%	20%	16%