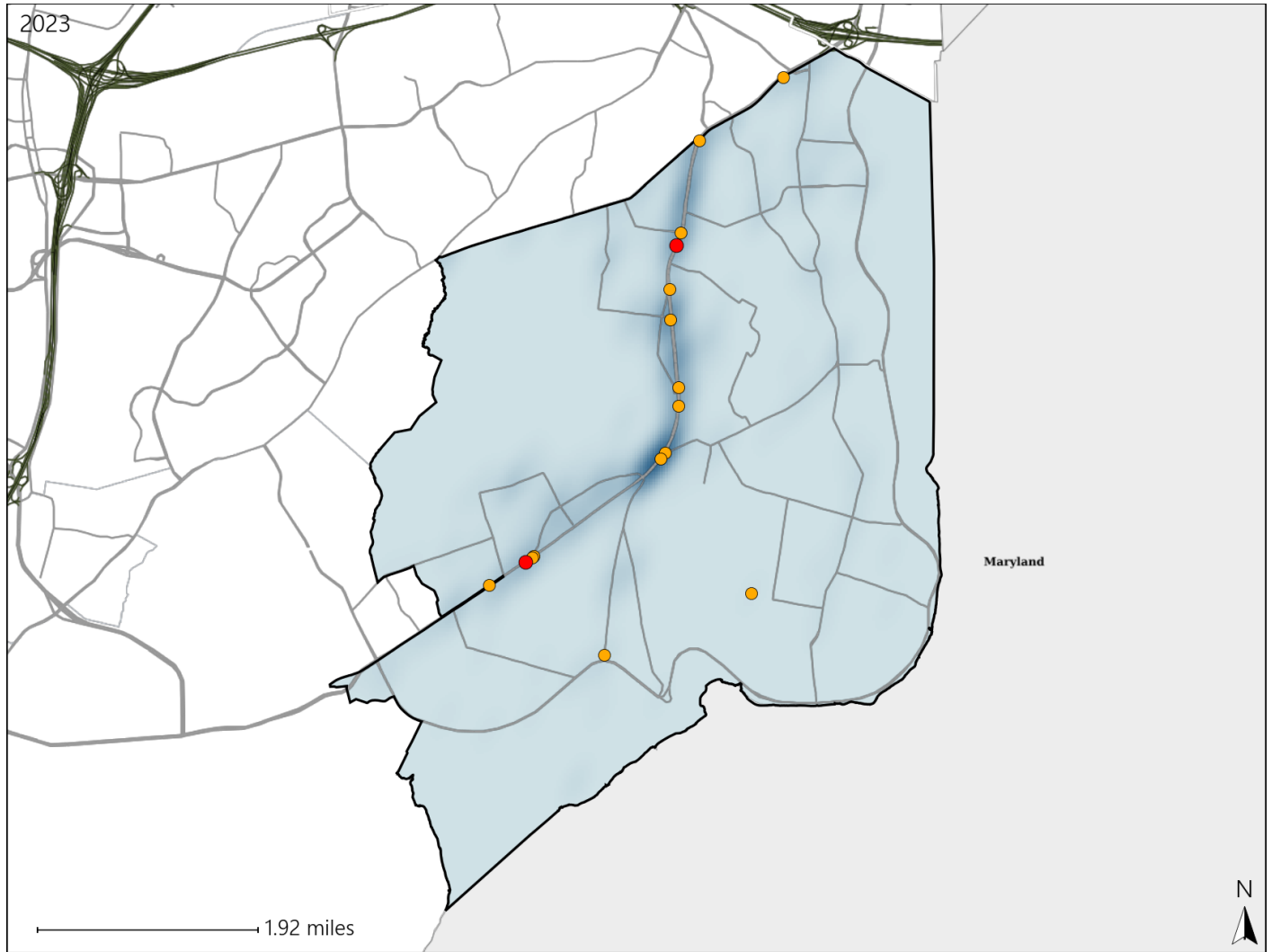


# Virginia House District 16 Crash Statistics

Report Generated May, 2024

	Count	Highest Time Period(s)	Highest Day(s)	Highest Month(s)
<b>Fatal Crashes</b>	<b>2</b>	<b>9:00pm - 11:59pm</b>	<b>Friday • Thursday</b>	<b>March • October</b>
<b>Resulting Fatalities</b>	<b>2</b>	(100%)	(100%)	(100%)
<b>Serious Injury Crashes</b>	<b>14</b>	<b>6:00pm - 8:59pm</b>	<b>Wednesday</b>	<b>June</b>
		(29%)	(29%)	(21%)



## House District 16 Crashes

Interstate Crashes

- Fatal
- Serious Injury

Non-interstate Crashes

- Fatal
- Serious Injury

The blue gradient represents the density of all crashes.

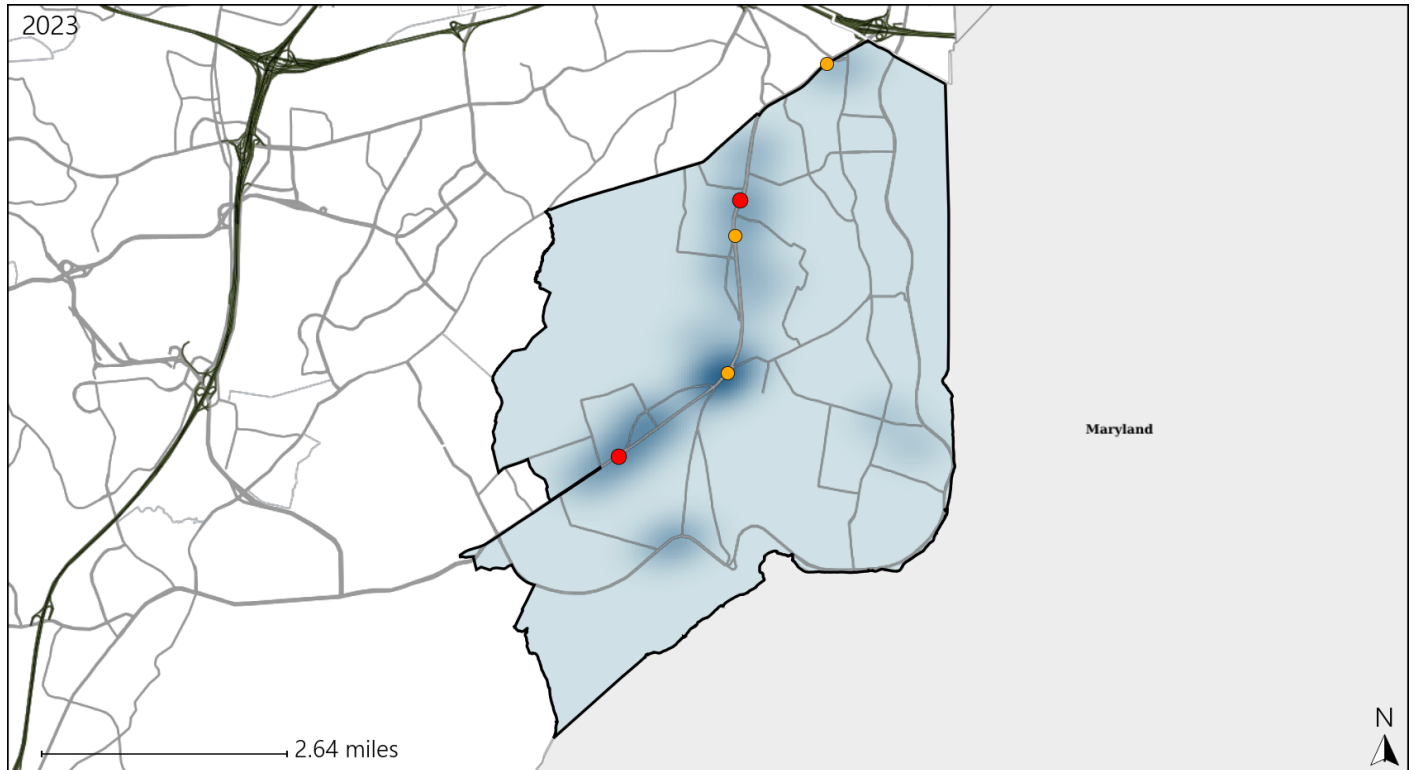


Available Crash Data - Calendar Year (CY)	CY 2020	CY 2021	CY 2022	CY 2023
<b>Total Crashes</b>	<b>317</b>	<b>318</b>	<b>440</b>	<b>465</b>
<b>Fatal Crashes</b>	<b>2</b>	<b>1</b>	<b>1</b>	<b>2</b>
<b>Injury Crashes</b>	<b>99</b>	<b>114</b>	<b>149</b>	<b>147</b>

# Virginia House District 16 Alcohol Crash Statistics

Report Generated May, 2024

	Count	Highest Time Period(s)	Highest Day(s)	Highest Month(s)
<b>Fatal Crashes</b>	<b>2</b>	<b>9:00pm - 11:59pm</b>	<b>Friday • Thursday</b>	<b>March • October</b>
<b>Resulting Fatalities</b>	<b>2</b>	(100%)	(100%)	(100%)
<b>Serious Injury Crashes</b>	<b>3</b>	<b>6:00pm - 8:59pm</b>	<b>Friday • Saturday</b>	<b>July • October</b>
		(67%)	(66%)	(66%)



## House District 16 Alcohol-Related Crashes

Interstate Crashes

Non-interstate Crashes

- Fatal
- Serious Injury

- Fatal
- Serious Injury

The blue gradient represents the density of all alcohol-related crashes.

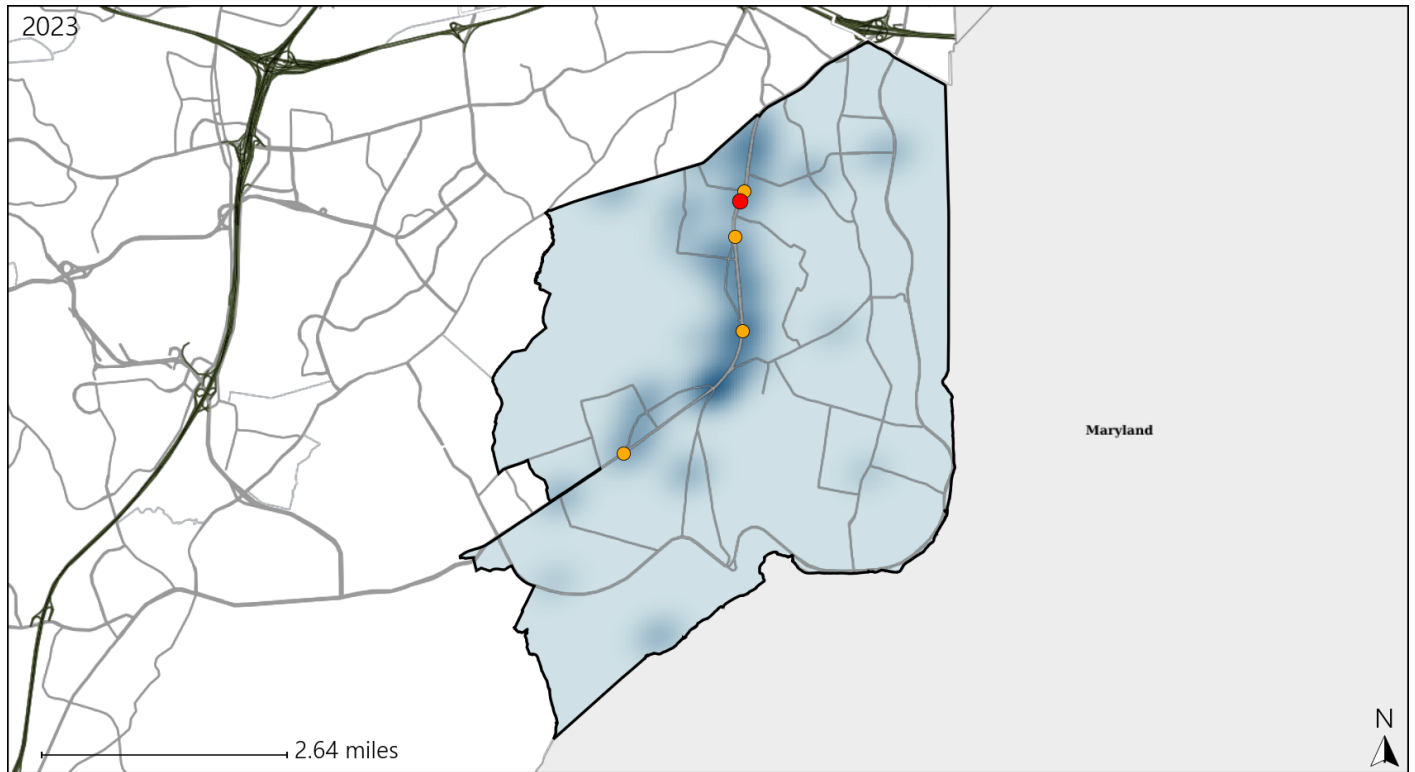


Available Crash Data - Calendar Year (CY)	CY 2020	CY 2021	CY 2022	CY 2023
<b>Total Crashes</b>	<b>317</b>	<b>318</b>	<b>440</b>	<b>465</b>
<b>Fatal Crashes</b>	<b>2</b>	<b>1</b>	<b>1</b>	<b>2</b>
<b>Injury Crashes</b>	<b>99</b>	<b>114</b>	<b>149</b>	<b>147</b>
<b>Alcohol-Related Fatal Crashes</b>	<b>1</b>	<b>1</b>	<b>1</b>	<b>2</b>
<b>Percent of Alcohol-Related Fatal Crashes to Total Fatal Crashes</b>	<b>50%</b>	<b>100%</b>	<b>100%</b>	<b>100%</b>
<b>Alcohol-Related Injury Crashes</b>	<b>10</b>	<b>9</b>	<b>11</b>	<b>12</b>
<b>Percent of Alcohol-Related Injury Crashes to Total Injury Crashes</b>	<b>10%</b>	<b>8%</b>	<b>7%</b>	<b>8%</b>

# Virginia House District 16 Speed Crash Statistics

Report Generated May, 2024

	Count	Highest Time Period(s)	Highest Day(s)	Highest Month(s)
<b>Fatal Crashes</b>	<b>1</b>	<b>9:00pm - 11:59pm</b>	<b>Thursday</b>	<b>March</b>
<b>Resulting Fatalities</b>	<b>1</b>	<b>(100%)</b>	<b>(100%)</b>	<b>(100%)</b>
<b>Serious Injury Crashes</b>	<b>4</b>	<b>3:00pm - 5:59pm 6:00pm - 8:59pm</b>	<b>Wednesday</b>	<b>February • July</b>
		<b>(50%)</b>	<b>(50%)</b>	<b>(50%)</b>



## House District 16 Speed-Related Crashes

Interstate Crashes

- Fatal
- Serious Injury

Non-interstate Crashes

- Fatal
- Serious Injury

The blue gradient represents the density of all speed-related crashes.

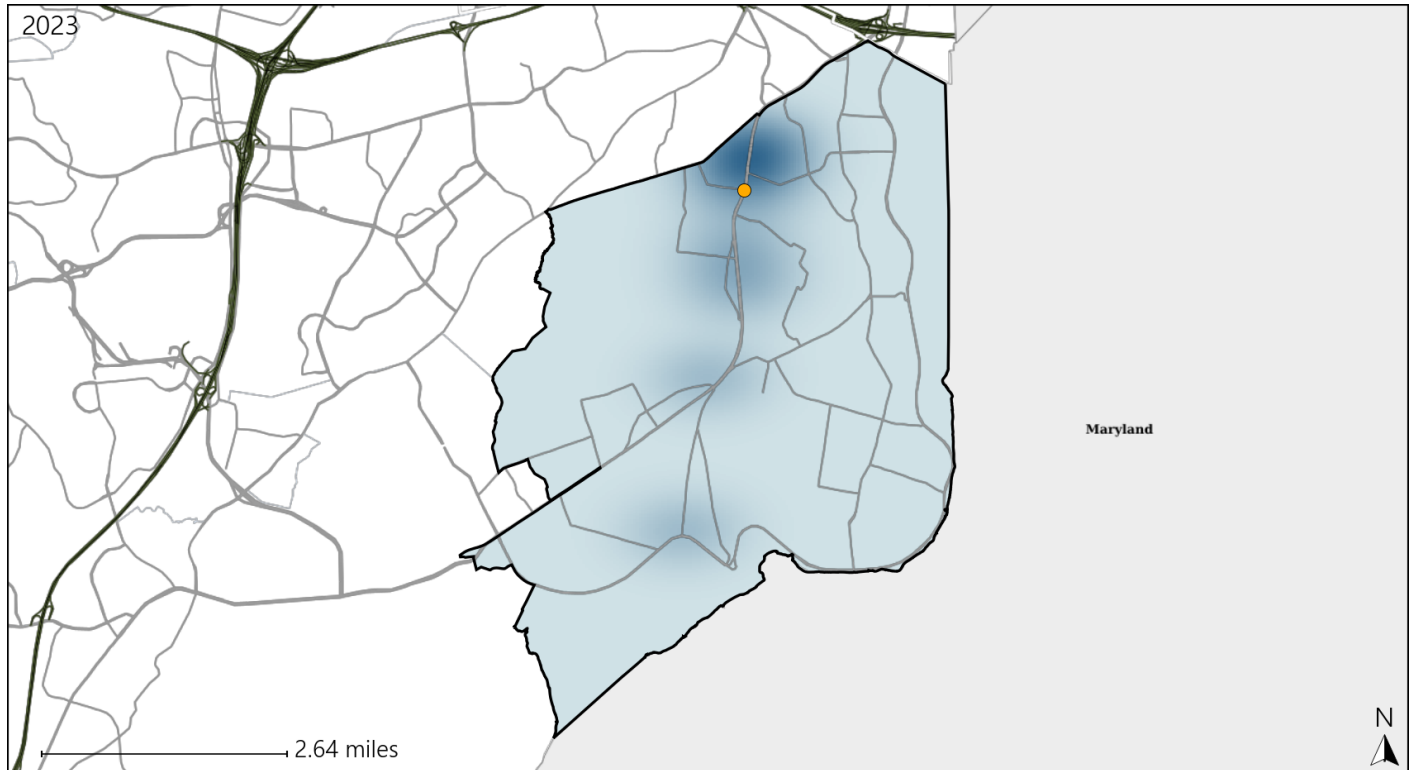


Available Crash Data - Calendar Year (CY)	CY 2020	CY 2021	CY 2022	CY 2023
Total Crashes	317	318	440	465
Fatal Crashes	2	1	1	2
Injury Crashes	99	114	149	147
Speed-Related Fatal Crashes	0	0	0	1
Percent of Speed-Related Fatal Crashes to Total Fatal Crashes	0%	0%	0%	50%
Speed-Related Injury Crashes	18	9	26	22
Percent of Speed-Related Injury Crashes to Total Injury Crashes	18%	8%	17%	15%

# Virginia House District 16 Unrestrained Crash Statistics

Report Generated May, 2024

	Count	Highest Time Period(s)	Highest Day(s)	Highest Month(s)
<b>Fatal Crashes</b>	0	-	-	-
<b>Unrestrained Fatalities</b>	0	-	-	-
<b>Serious Injury Crashes</b>	1	3:00pm - 5:59pm (100%)	Thursday (100%)	March (100%)



## House District 16 Unrestrained-Related Crashes

Interstate Crashes

- Fatal
- Serious Injury

Non-interstate Crashes

- Fatal
- Serious Injury

The blue gradient represents the density of all unrestrained-related crashes.

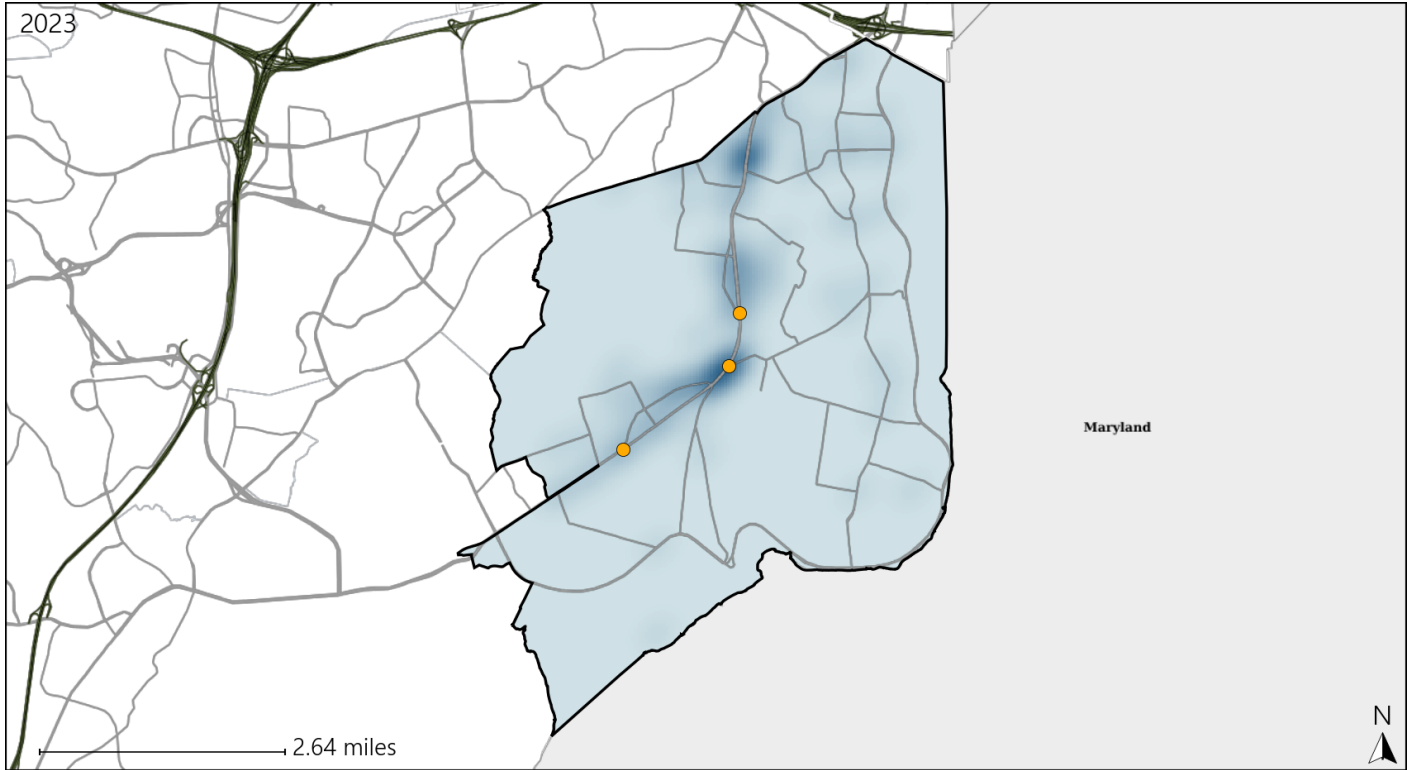


Available Crash Data - Calendar Year (CY)	CY 2020	CY 2021	CY 2022	CY 2023
<b>Total Crashes</b>	317	318	440	465
<b>Fatalities</b>	2	1	1	2
<b>Injuries</b>	168	170	275	247
<b>Unrestrained Fatalities</b>	0	0	0	0
<b>Percent of Unrestrained Fatalities to Total Fatalities</b>	0%	0%	0%	0%
<b>Unrestrained Injuries</b>	3	2	8	10
<b>Percent of Unrestrained Injuries to Total Injuries</b>	2%	1%	3%	4%

# Virginia House District 16 Distracted Driving Crash Statistics

Report Generated May, 2024

	Count	Highest Time Period(s)	Highest Day(s)	Highest Month(s)
<b>Fatal Crashes</b>	0	-	-	-
<b>Resulting Fatalities</b>	0	-	-	-
<b>Serious Injury Crashes</b>	3	6:00am - 8:59am (67%)	Sunday • Thursday (66%)	June (67%)



## House District 16 Distracted Driving-Related Crashes

- |                    |                        |
|--------------------|------------------------|
| Interstate Crashes | Non-interstate Crashes |
| ● Fatal            | ● Fatal                |
| ● Serious Injury   | ● Serious Injury       |

The blue gradient represents the density of all distracted driving-related crashes.



Available Crash Data - Calendar Year (CY)	CY 2020	CY 2021	CY 2022	CY 2023
<b>Total Crashes</b>	317	318	440	465
<b>Fatal Crashes</b>	2	1	1	2
<b>Injury Crashes</b>	99	114	149	147
<b>Distracted Driving-Related Fatal Crashes</b>	0	0	0	0
<b>Percent of Distracted Driving-Related Fatal Crashes to Total Fatal Crashes</b>	0%	0%	0%	0%
<b>Distracted Driving-Related Injury Crashes</b>	23	28	35	29
<b>Percent of Distracted Driving-Related Injury Crashes to Total Injury Crashes</b>	23%	25%	23%	20%