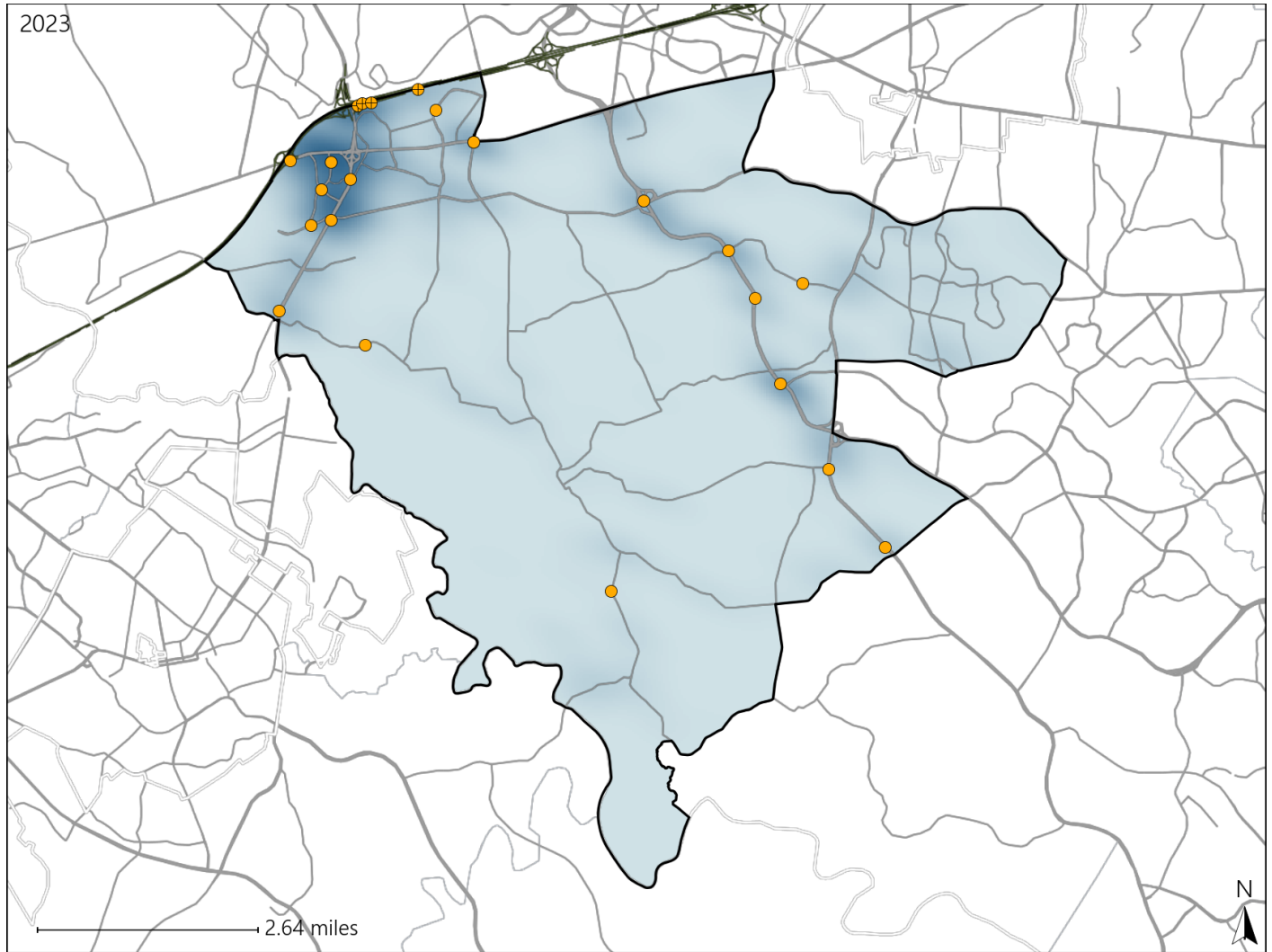


Virginia House District 10 Crash Statistics

Report Generated May, 2024

	Count	Highest Time Period(s)	Highest Day(s)	Highest Month(s)
Fatal Crashes	0	-	-	-
Resulting Fatalities	0	-	-	-
Serious Injury Crashes	23	9:00pm - 11:59pm (30%)	Saturday (30%)	April (17%)



House District 10 Crashes

Interstate Crashes

- Fatal
- Serious Injury

Non-interstate Crashes

- Fatal
- Serious Injury

The blue gradient represents the density of all crashes.

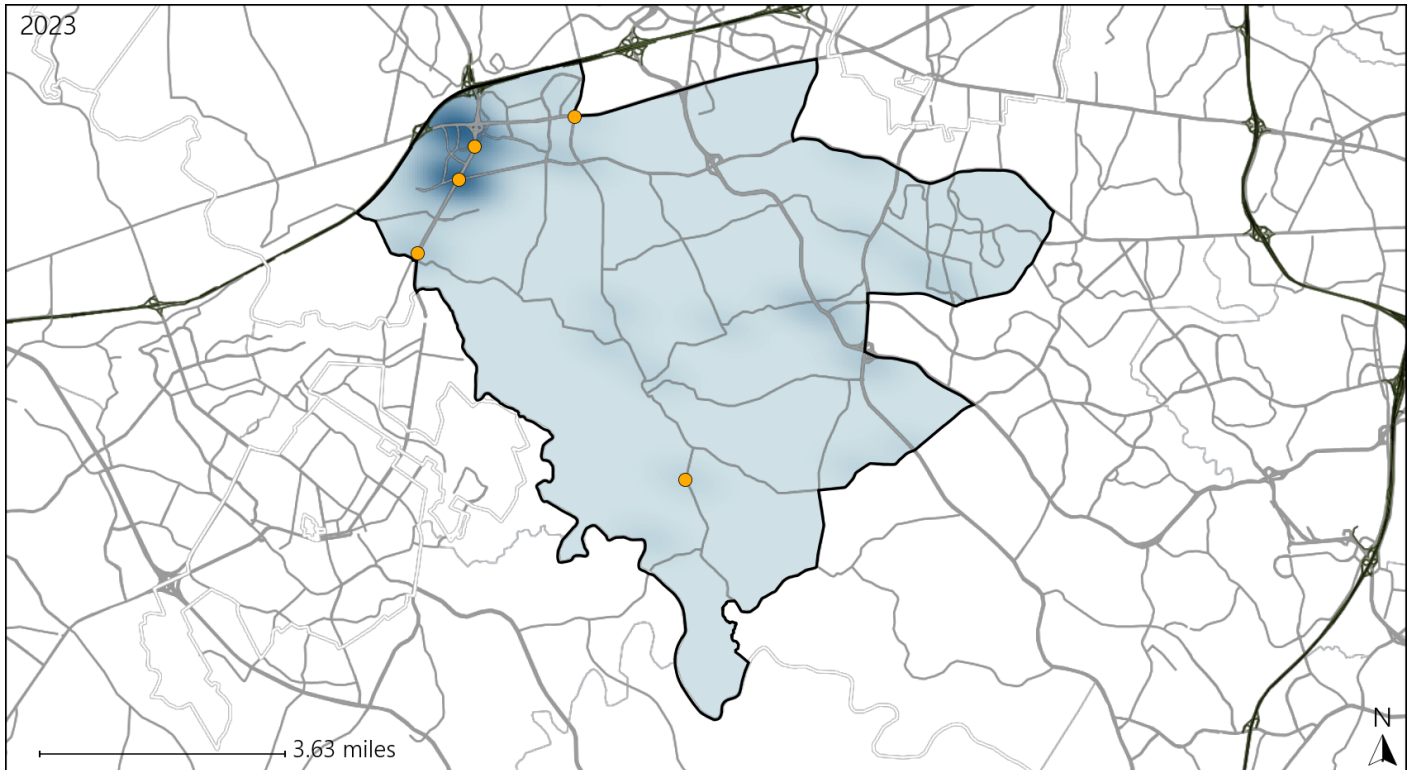


Available Crash Data - Calendar Year (CY)	CY 2020	CY 2021	CY 2022	CY 2023
Total Crashes	716	798	988	893
Fatal Crashes	2	2	3	0
Injury Crashes	186	215	248	253

Virginia House District 10 Alcohol Crash Statistics

Report Generated May, 2024

	Count	Highest Time Period(s)	Highest Day(s)	Highest Month(s)
Fatal Crashes	0	-	-	-
Resulting Fatalities	0	-	-	-
Serious Injury Crashes	5	9:00pm - 11:59pm (60%)	Wednesday (60%)	April • January (40%)



House District 10 Alcohol-Related Crashes

Interstate Crashes Non-interstate Crashes
 ● Fatal ● Fatal
 ● Serious Injury ● Serious Injury

The blue gradient represents the density of all alcohol-related crashes.

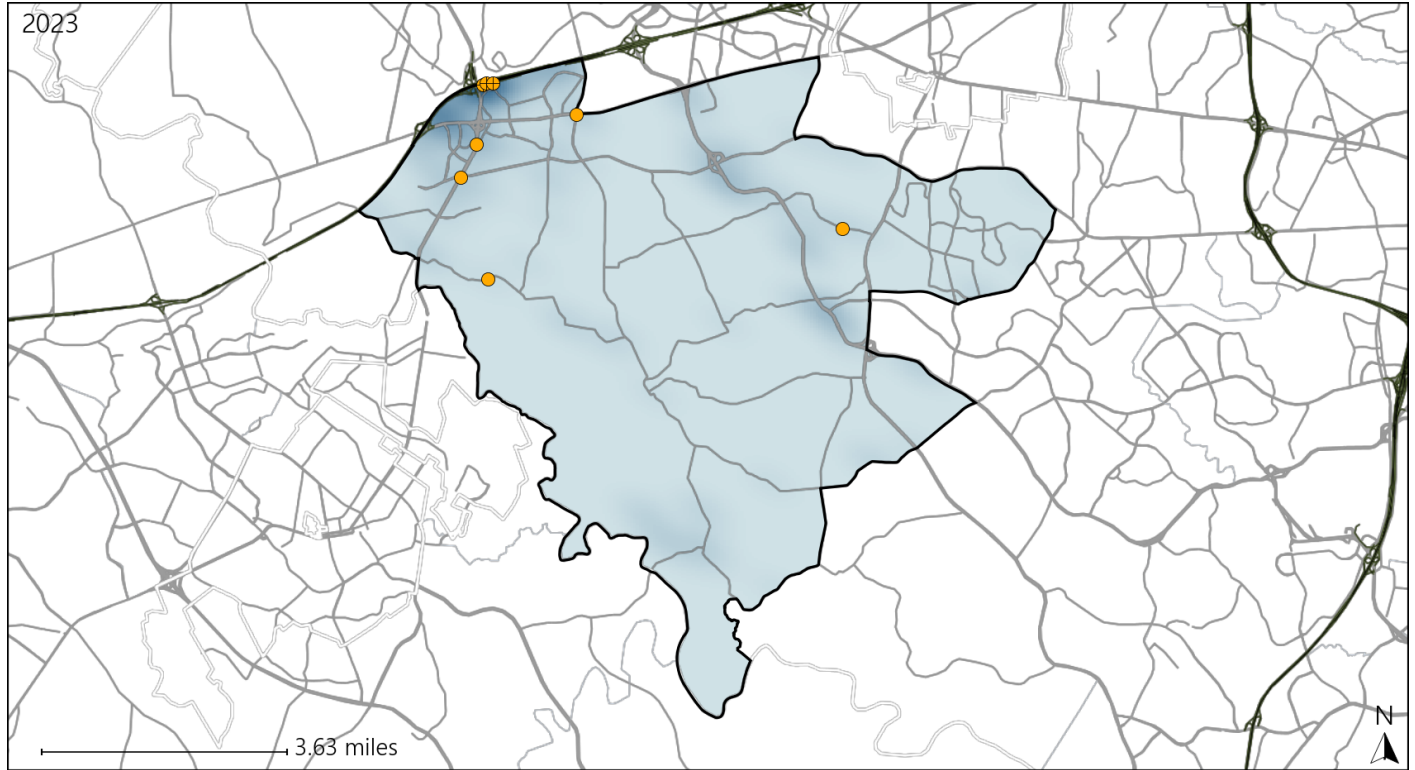


Available Crash Data - Calendar Year (CY)	CY 2020	CY 2021	CY 2022	CY 2023
Total Crashes	716	798	988	893
Fatal Crashes	2	2	3	0
Injury Crashes	186	215	248	253
Alcohol-Related Fatal Crashes	2	1	2	0
Percent of Alcohol-Related Fatal Crashes to Total Fatal Crashes	100%	50%	67%	0%
Alcohol-Related Injury Crashes	13	16	17	18
Percent of Alcohol-Related Injury Crashes to Total Injury Crashes	7%	7%	7%	7%

Virginia House District 10 Speed Crash Statistics

Report Generated May, 2024

	Count	Highest Time Period(s)	Highest Day(s)	Highest Month(s)
Fatal Crashes	0	-	-	-
Resulting Fatalities	0	-	-	-
Serious Injury Crashes	8	9:00pm - 11:59pm (50%)	Saturday • Sunday (50%)	April (38%)



House District 10 Speed-Related Crashes

Interstate Crashes Non-interstate Crashes
 ● Fatal ● Fatal
 ● Serious Injury ● Serious Injury

The blue gradient represents the density of all speed-related crashes.

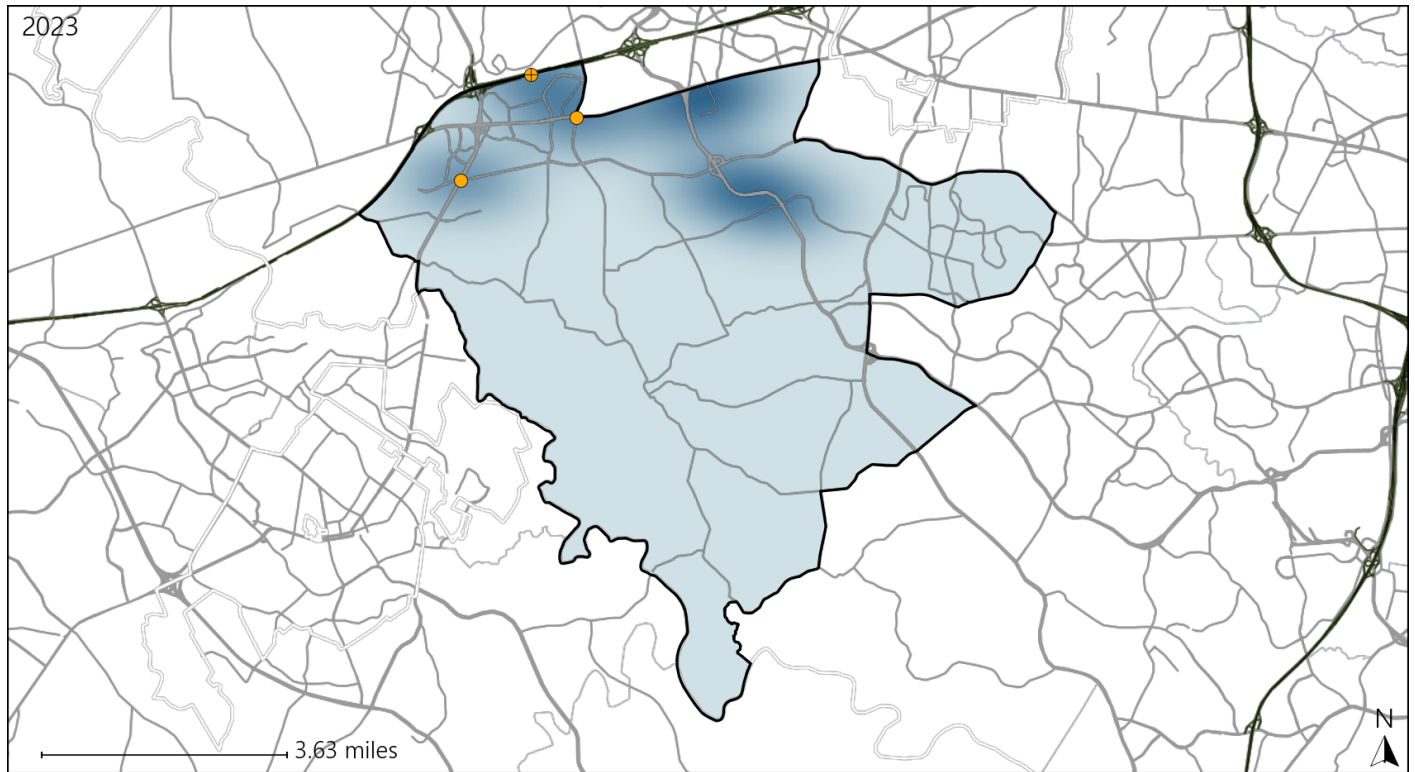


Available Crash Data - Calendar Year (CY)	CY 2020	CY 2021	CY 2022	CY 2023
Total Crashes	716	798	988	893
Fatal Crashes	2	2	3	0
Injury Crashes	186	215	248	253
Speed-Related Fatal Crashes	0	2	0	0
Percent of Speed-Related Fatal Crashes to Total Fatal Crashes	0%	100%	0%	0%
Speed-Related Injury Crashes	33	40	47	52
Percent of Speed-Related Injury Crashes to Total Injury Crashes	18%	19%	19%	21%

Virginia House District 10 Unrestrained Crash Statistics

Report Generated May, 2024

	Count	Highest Time Period(s)	Highest Day(s)	Highest Month(s)
Fatal Crashes	0	-	-	-
Unrestrained Fatalities	0	-	-	-
Serious Injury Crashes	3	6:00am - 8:59am 9:00pm - 11:59pm (66%)	Wednesday (67%)	October (67%)



House District 10 Unrestrained-Related Crashes

- | | |
|--------------------|------------------------|
| Interstate Crashes | Non-interstate Crashes |
| ● Fatal | ● Fatal |
| ⊕ Serious Injury | ● Serious Injury |

The blue gradient represents the density of all unrestrained-related crashes.

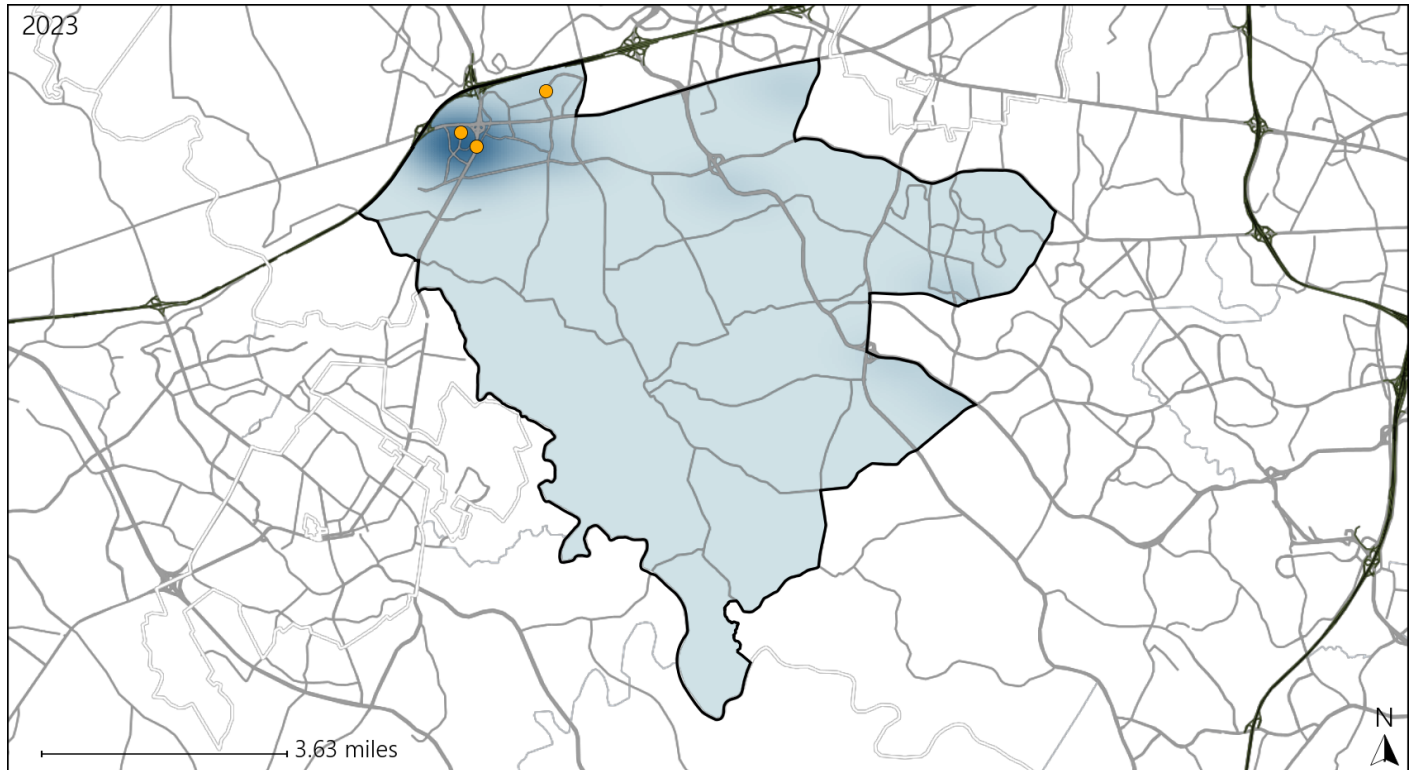


Available Crash Data - Calendar Year (CY)	CY 2020	CY 2021	CY 2022	CY 2023
Total Crashes	716	798	988	893
Fatalities	2	2	3	0
Injuries	290	340	369	422
Unrestrained Fatalities	0	0	0	0
Percent of Unrestrained Fatalities to Total Fatalities	0%	0%	0%	0%
Unrestrained Injuries	6	6	10	8
Percent of Unrestrained Injuries to Total Injuries	2%	2%	3%	2%

Virginia House District 10 Pedestrian Crash Statistics

Report Generated May, 2024

	Count	Highest Time Period(s)	Highest Day(s)	Highest Month(s)
Fatal Crashes	0	-	-	-
Pedestrian Fatalities	0	-	-	-
Serious Injury Crashes	3	6:00pm - 8:59pm (67%)	Monday (67%)	April - December (66%)



House District 10 Pedestrian-Related Crashes

- | | |
|--------------------|------------------------|
| Interstate Crashes | Non-interstate Crashes |
| Fatal | Fatal |
| Serious Injury | Serious Injury |

The blue gradient represents the density of all pedestrian-related crashes.

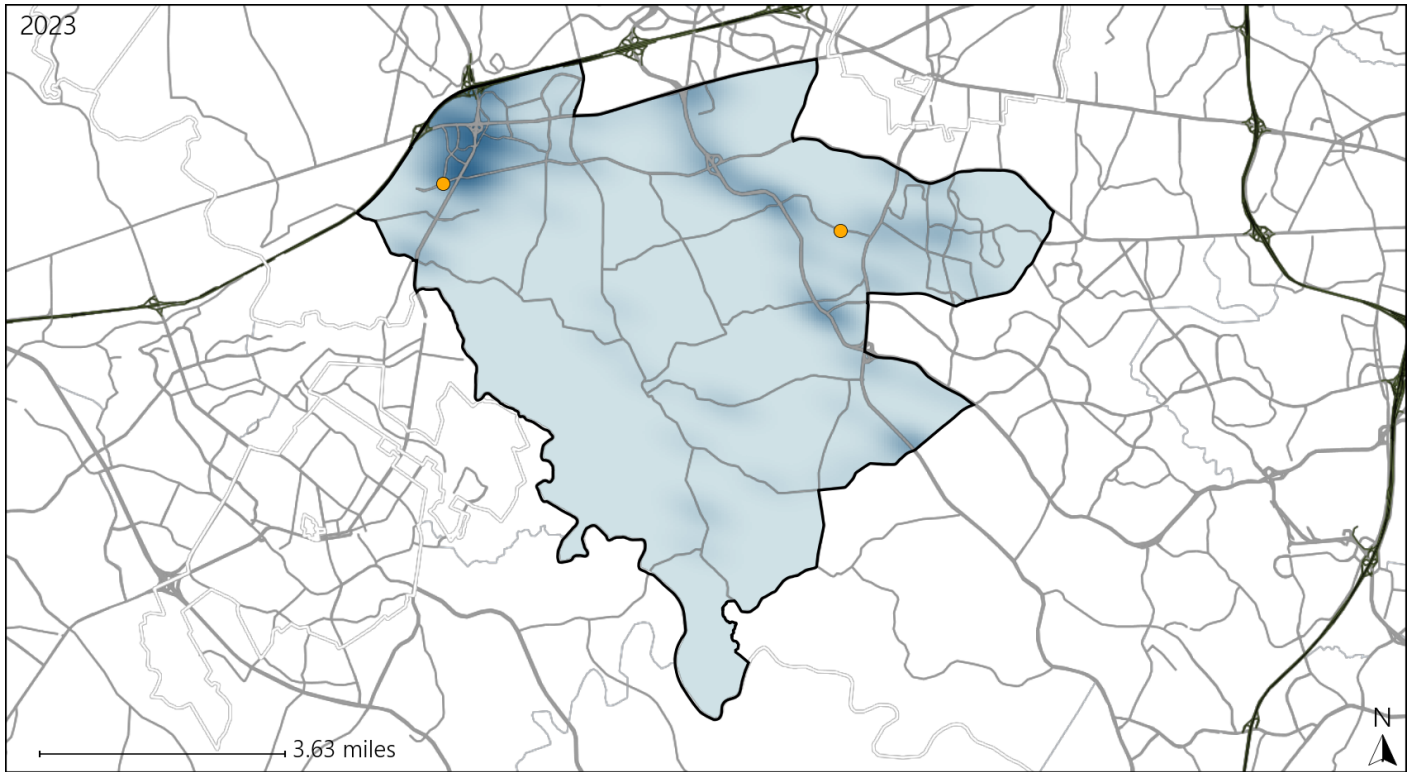


Available Crash Data - Calendar Year (CY)	CY 2020	CY 2021	CY 2022	CY 2023
Total Crashes	716	798	988	893
Fatal Crashes	2	2	3	0
Injury Crashes	186	215	248	253
Pedestrian-Related Fatal Crashes	2	0	2	0
Percent of Pedestrian-Related Fatal Crashes to Total Fatal Crashes	100%	0%	67%	0%
Pedestrian-Related Injury Crashes	9	5	12	19
Percent of Pedestrian-Related Injury Crashes to Total Injury Crashes	5%	2%	5%	8%

Virginia House District 10 Distracted Driving Crash Statistics

Report Generated May, 2024

	Count	Highest Time Period(s)	Highest Day(s)	Highest Month(s)
Fatal Crashes	0	-	-	-
Resulting Fatalities	0	-	-	-
Serious Injury Crashes	2	9:00pm - 11:59pm (100%)	Sunday • Thursday (100%)	August (100%)



House District 10 Distracted Driving-Related Crashes

- | | |
|--------------------|------------------------|
| Interstate Crashes | Non-interstate Crashes |
| ● Fatal | ● Fatal |
| ● Serious Injury | ● Serious Injury |

The blue gradient represents the density of all distracted driving-related crashes.



Available Crash Data - Calendar Year (CY)	CY 2020	CY 2021	CY 2022	CY 2023
Total Crashes	716	798	988	893
Fatal Crashes	2	2	3	0
Injury Crashes	186	215	248	253
Distracted Driving-Related Fatal Crashes	0	0	0	0
Percent of Distracted Driving-Related Fatal Crashes to Total Fatal Crashes	0%	0%	0%	0%
Distracted Driving-Related Injury Crashes	30	34	42	47
Percent of Distracted Driving-Related Injury Crashes to Total Injury Crashes	16%	16%	17%	19%